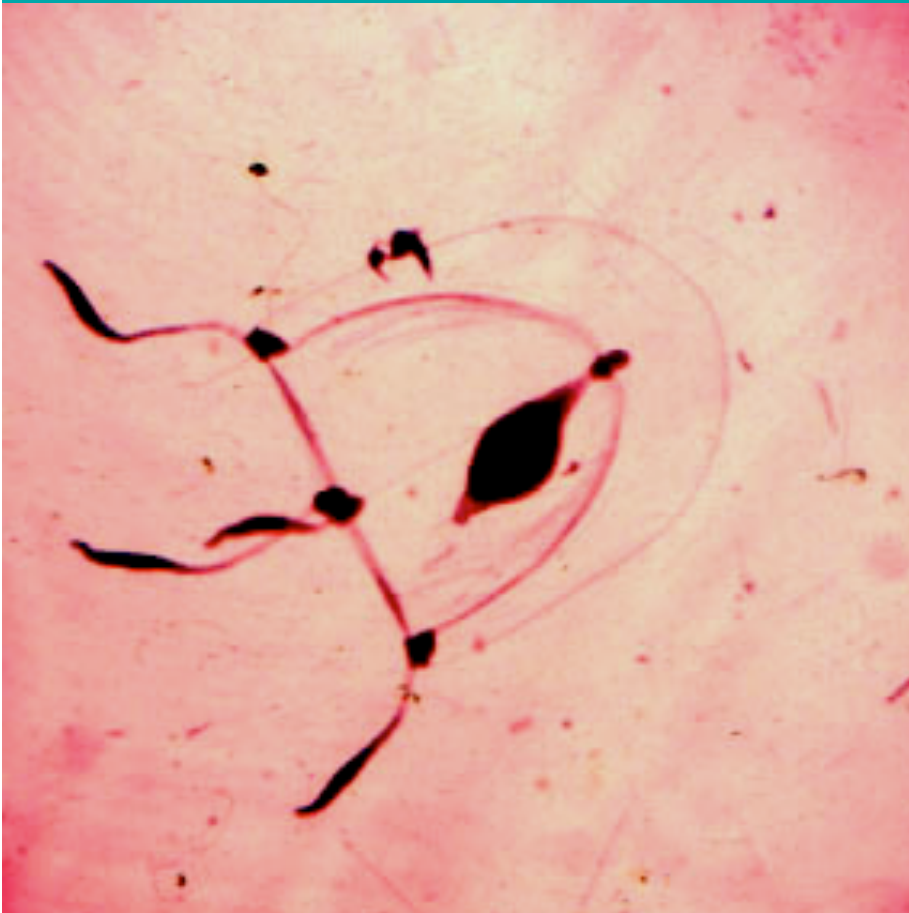


# Zooplankton

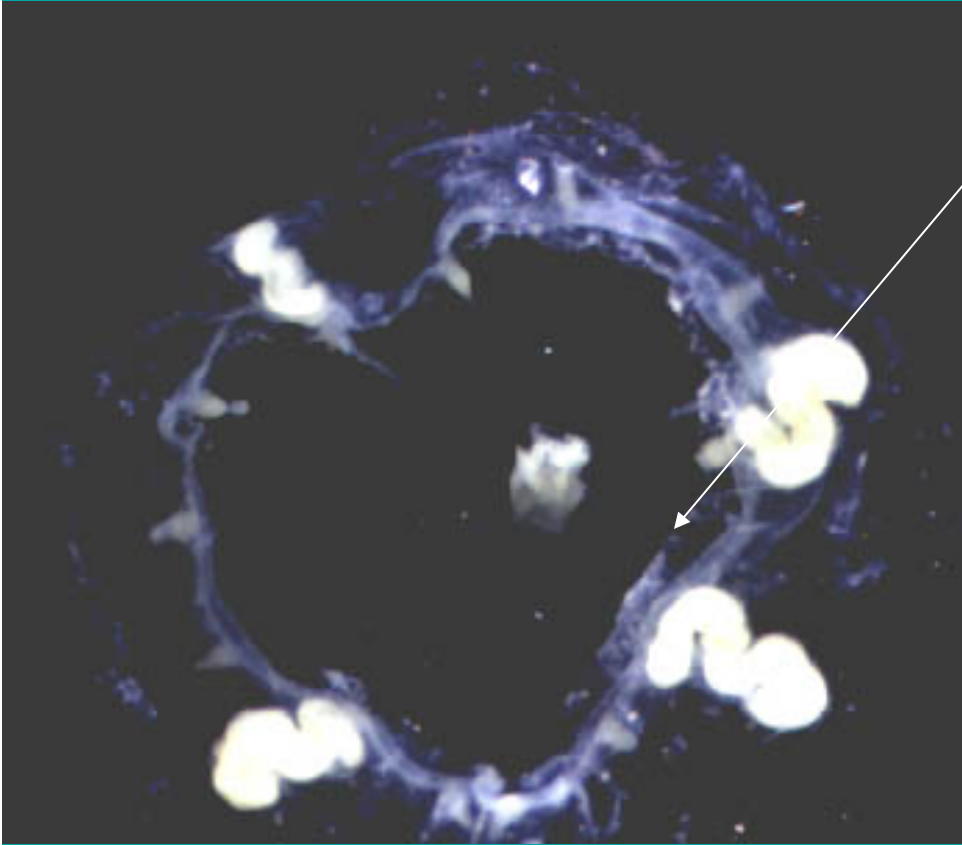
(1-62)

1



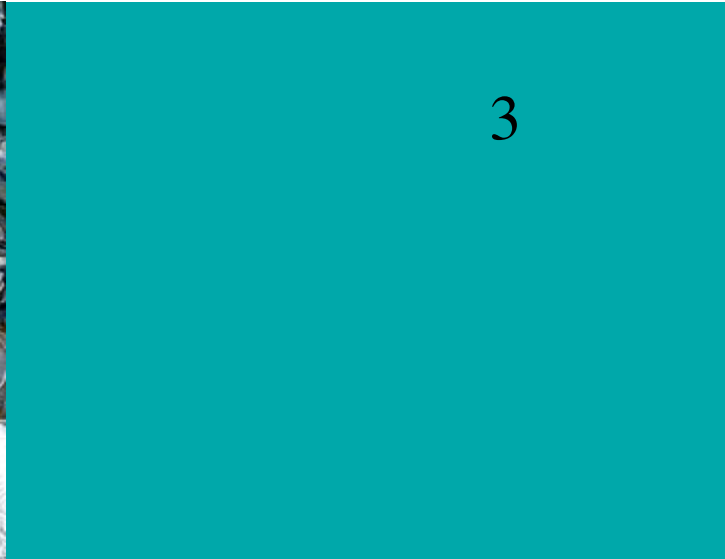
2

velum



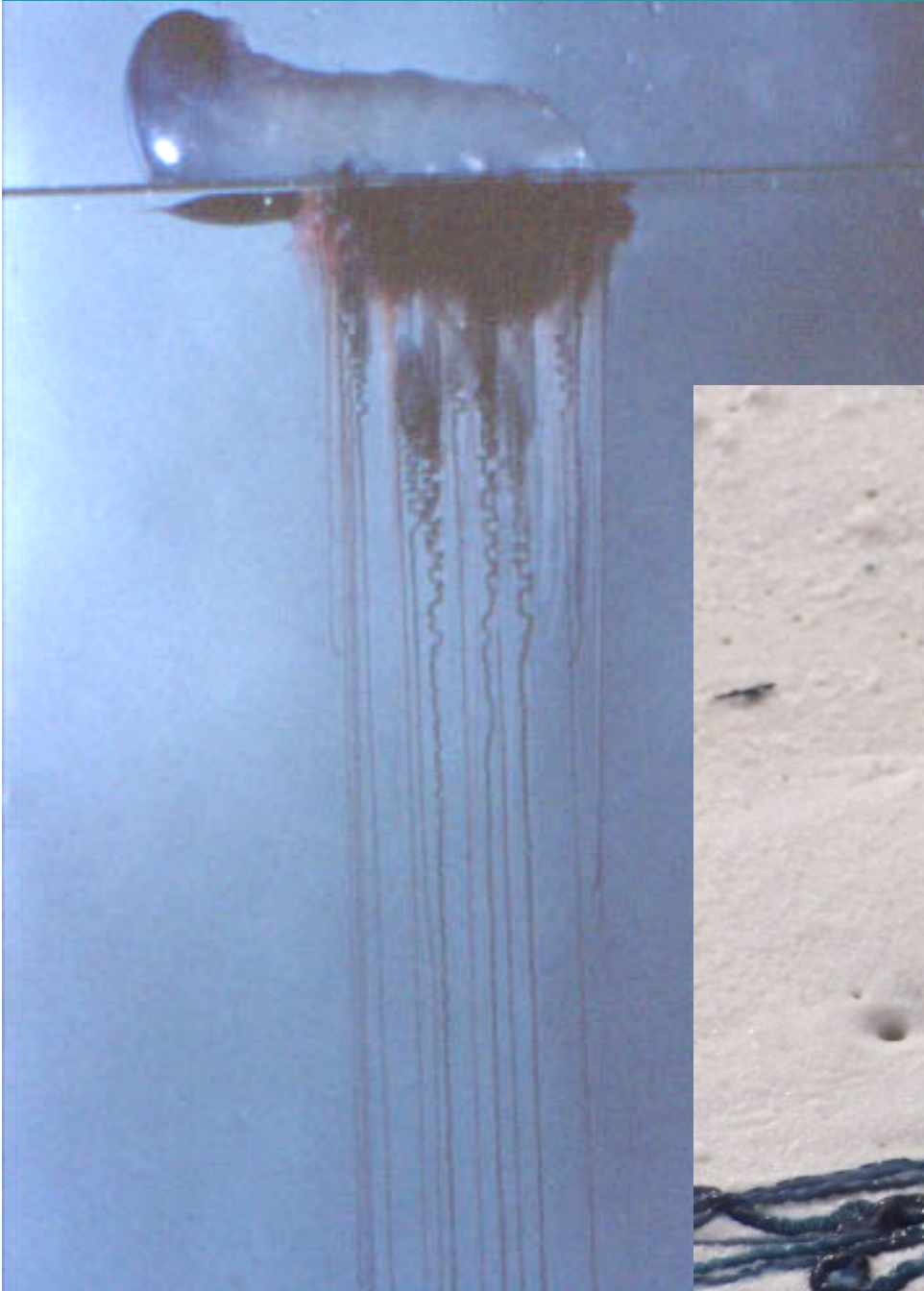


© Peter Dyrhda



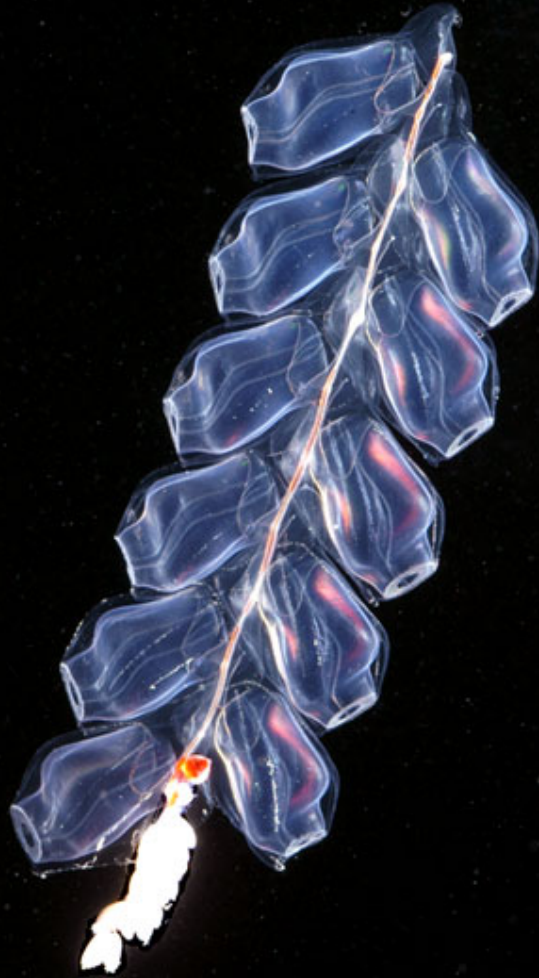
3







6

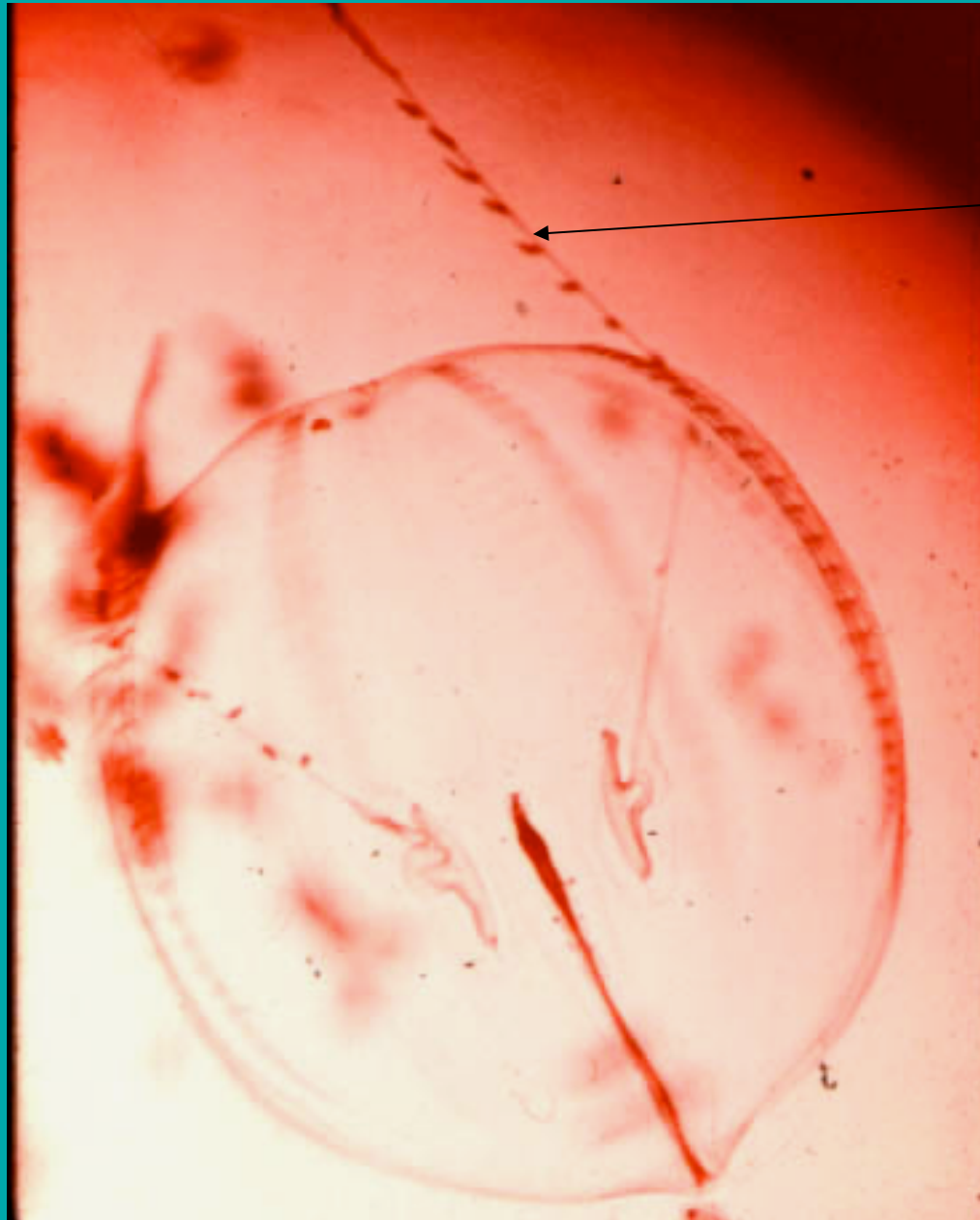








9



tentacle

10



comb row



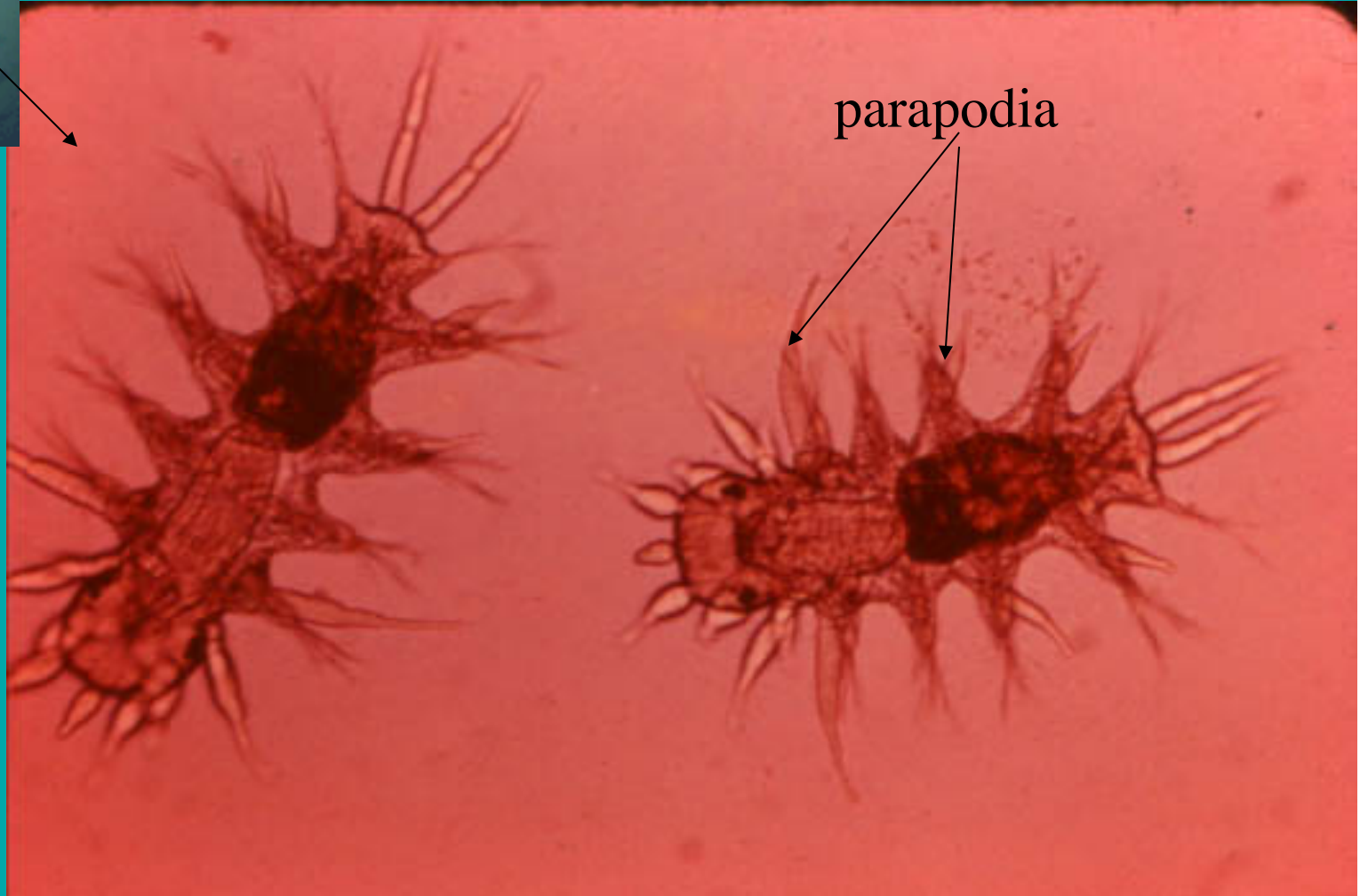
12



13

trochophore

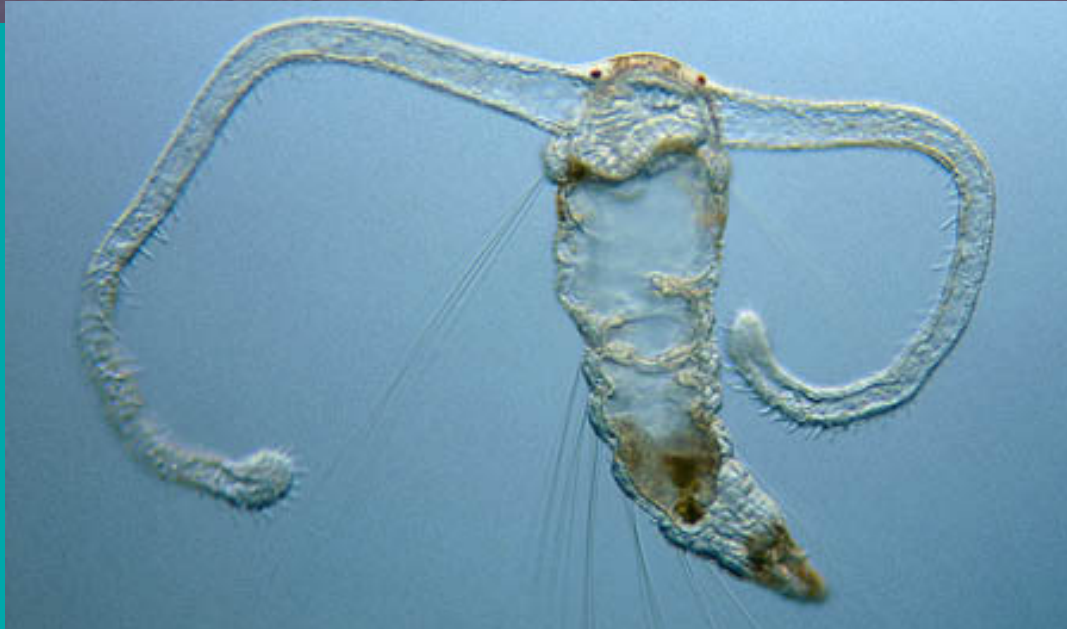
metatrochophores



parapodia



15

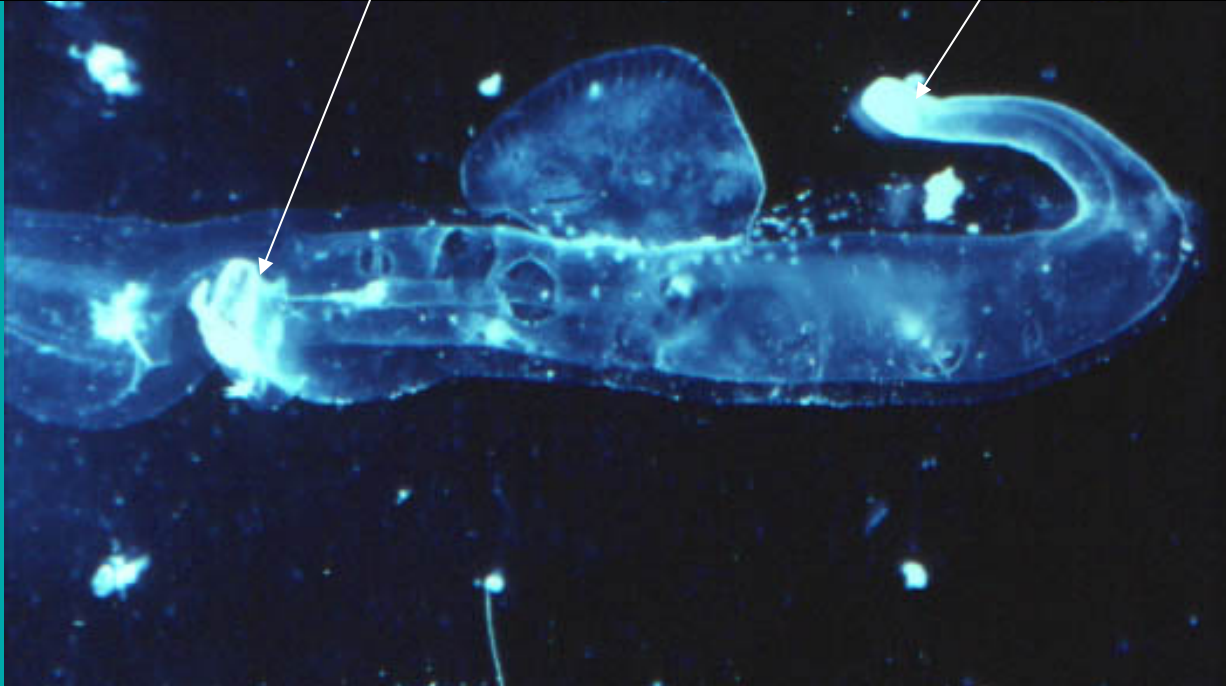
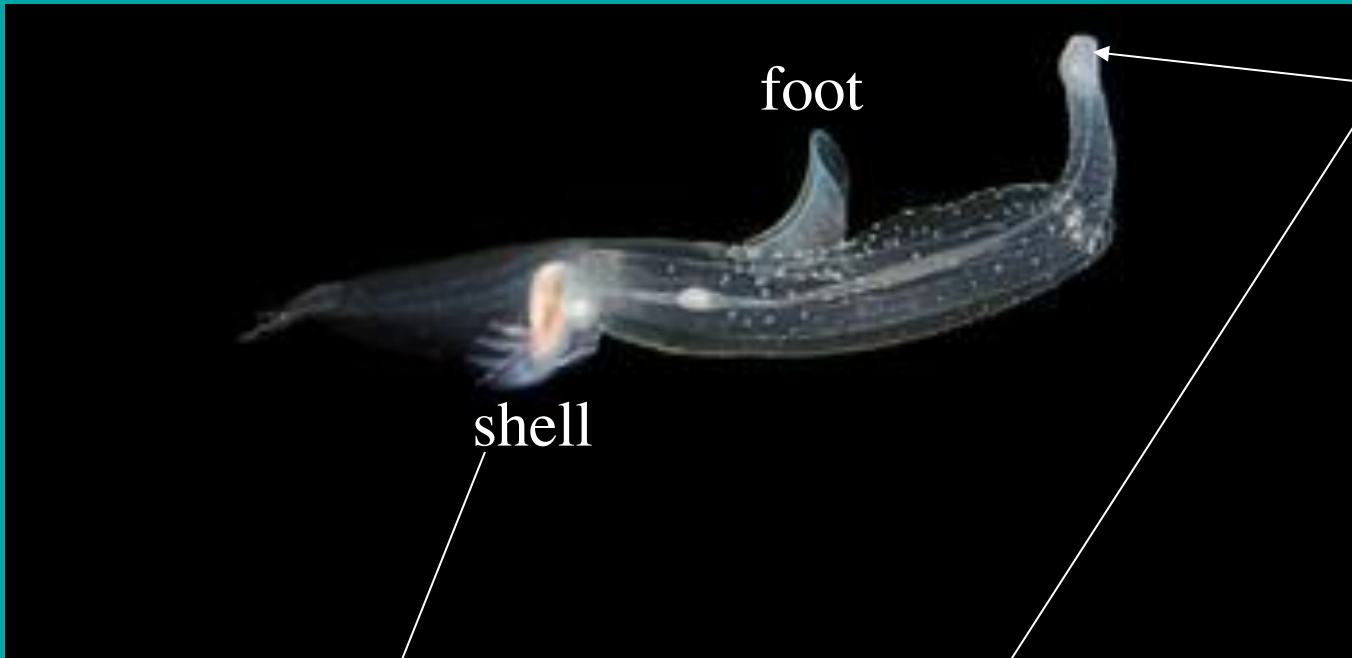








18

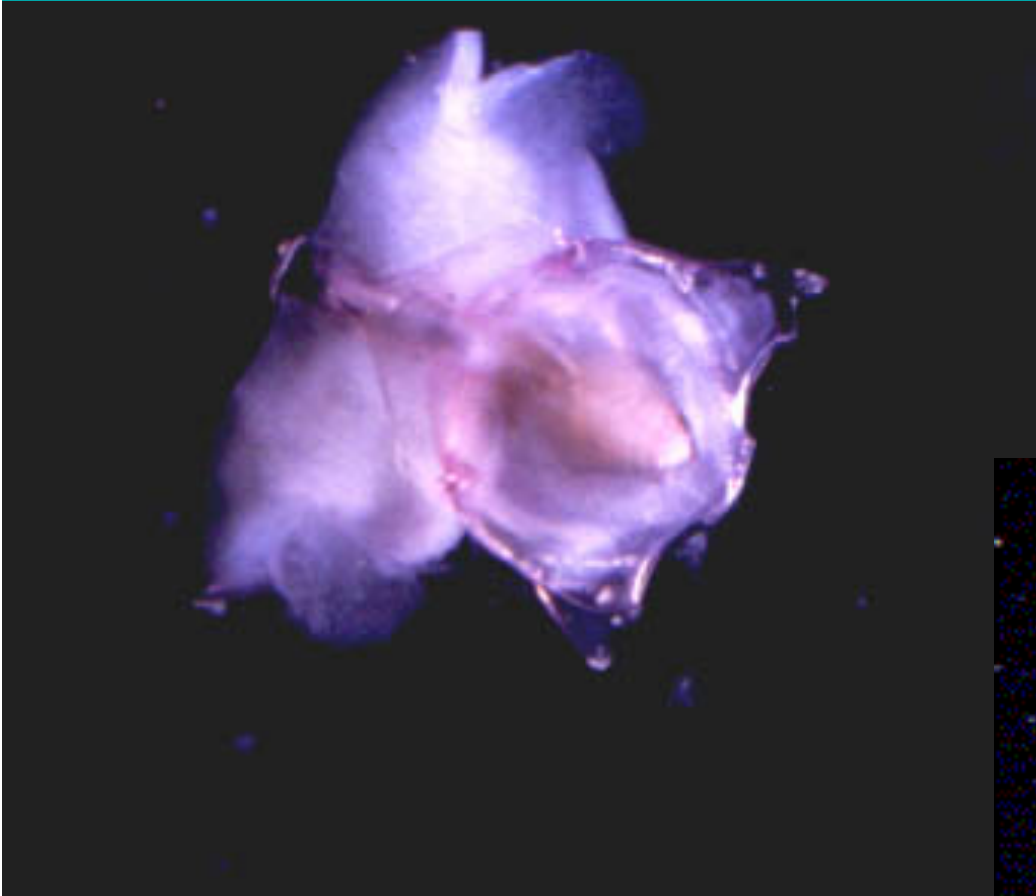


19

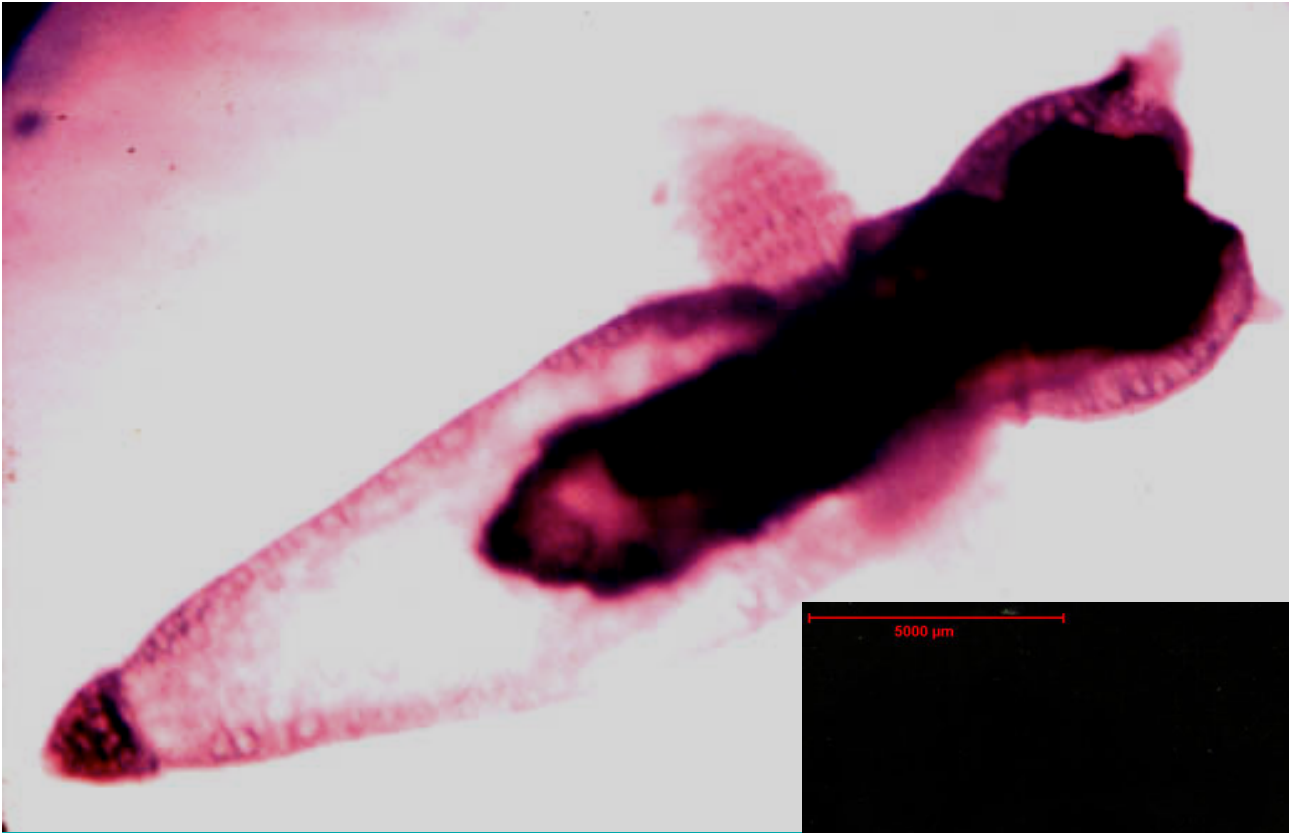












5000  $\mu\text{m}$

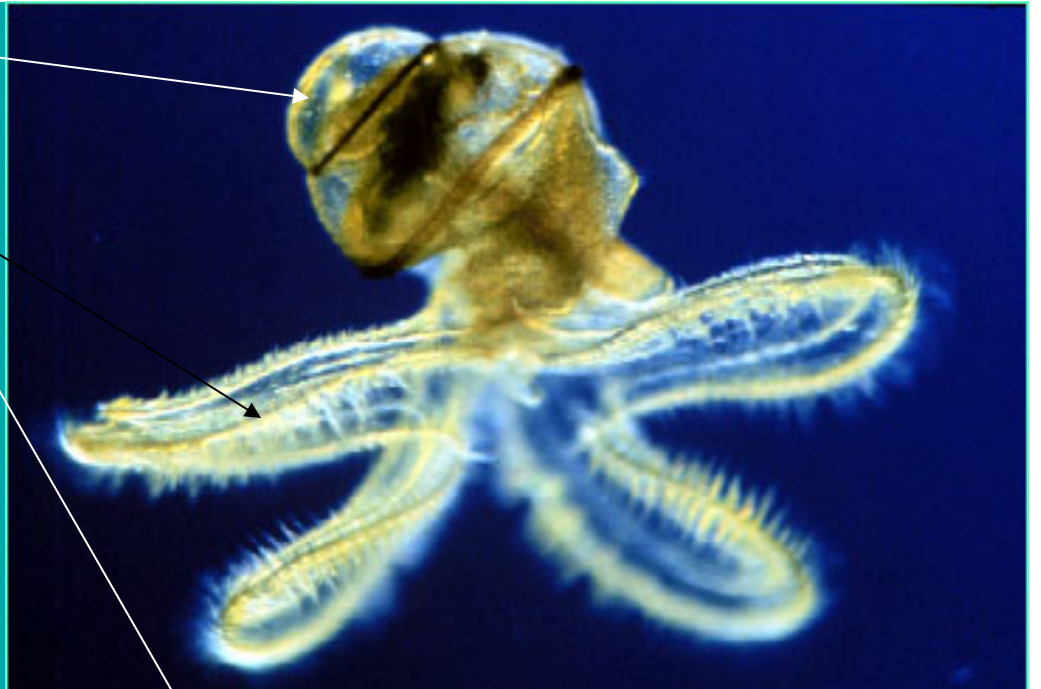
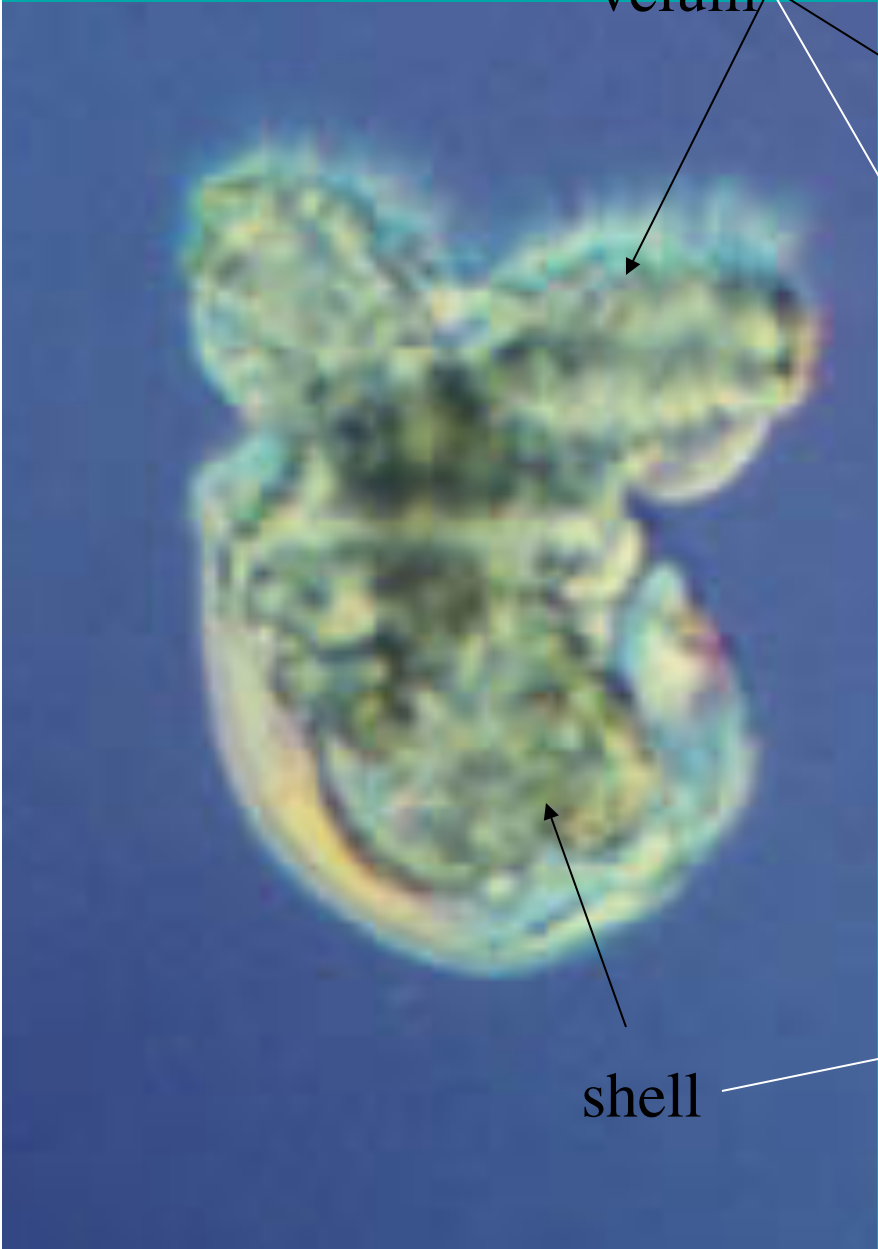




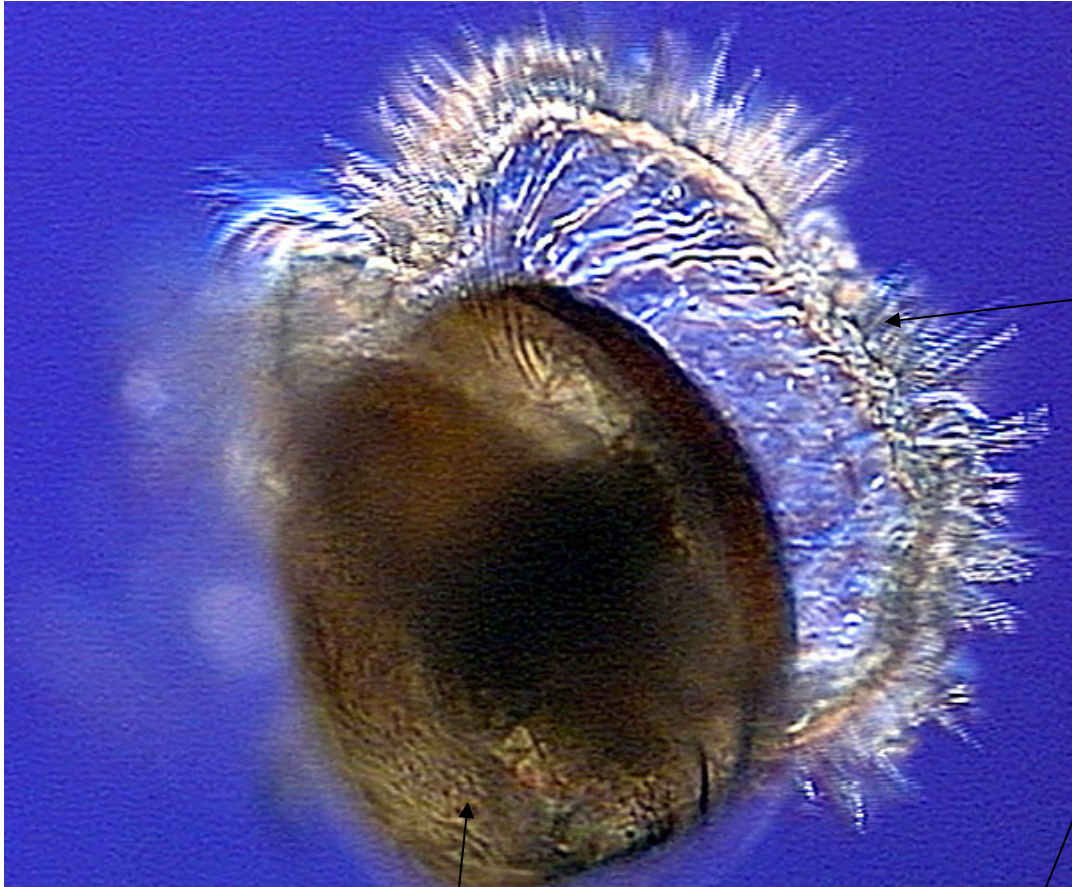
25 shell

velum

shell

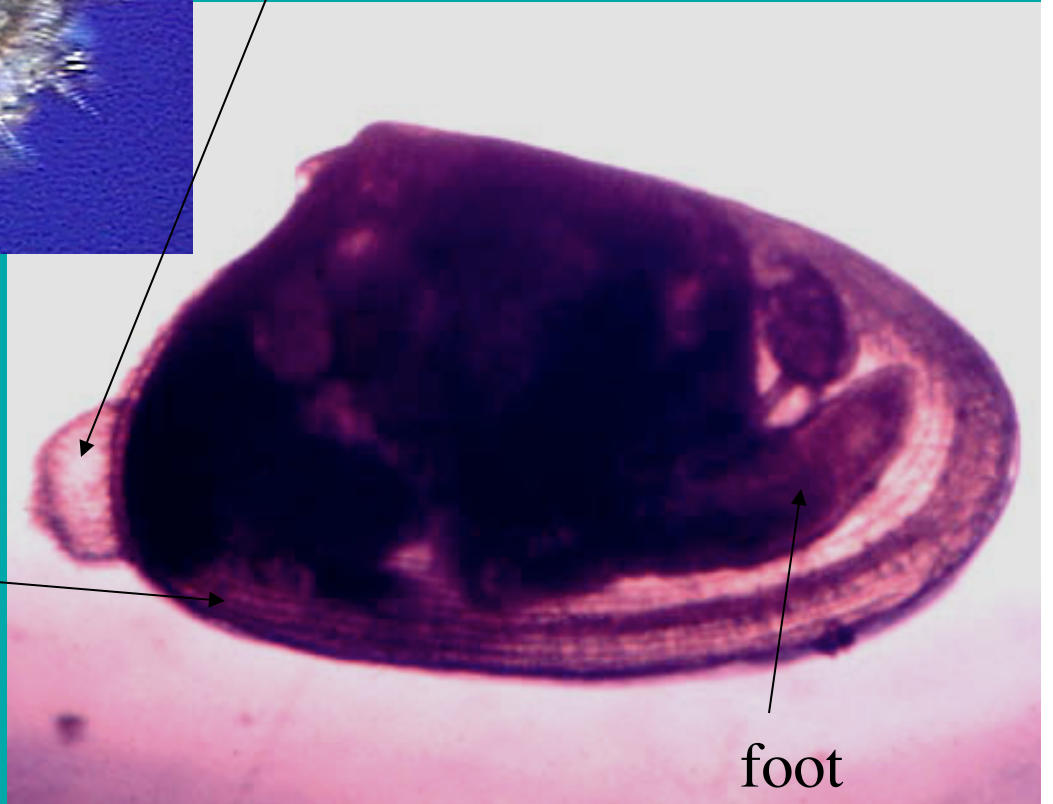


26



velum

shell



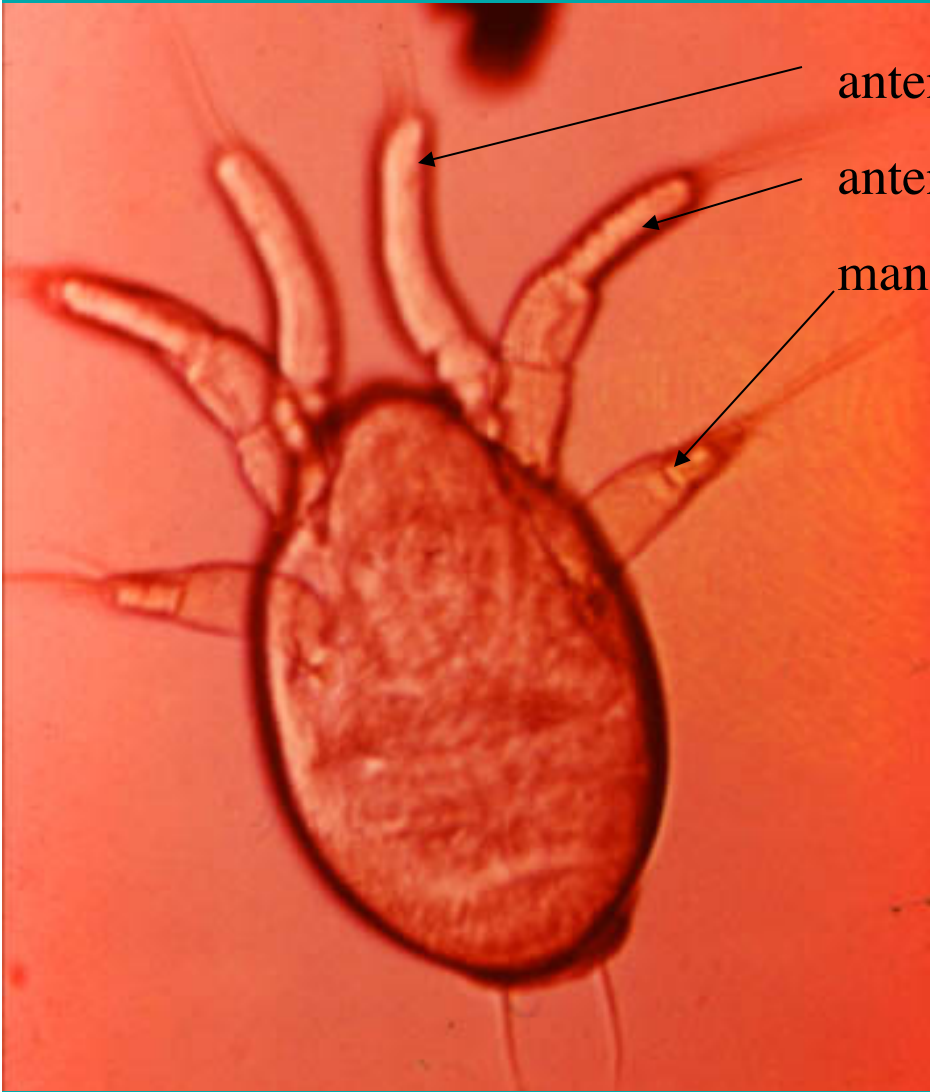
foot

27

antenna 1

antenna 2

mandible

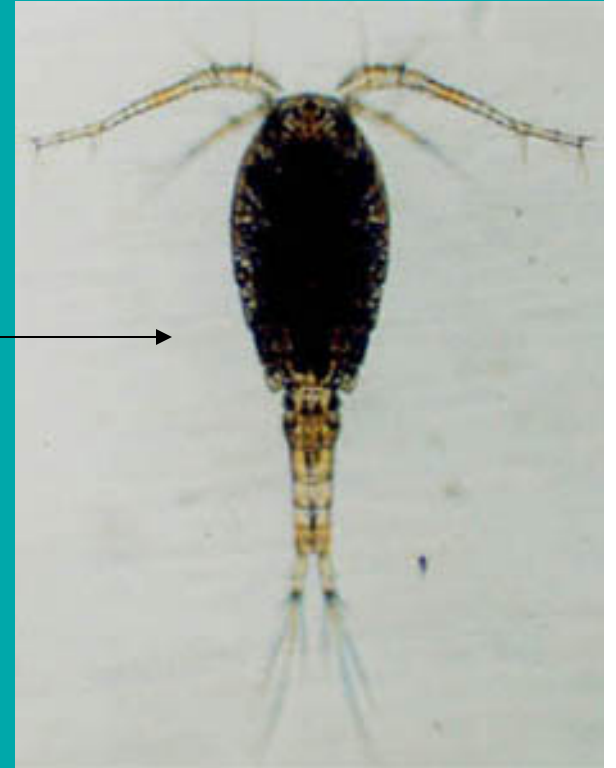




nauplius



copepodid



adult

nauplius

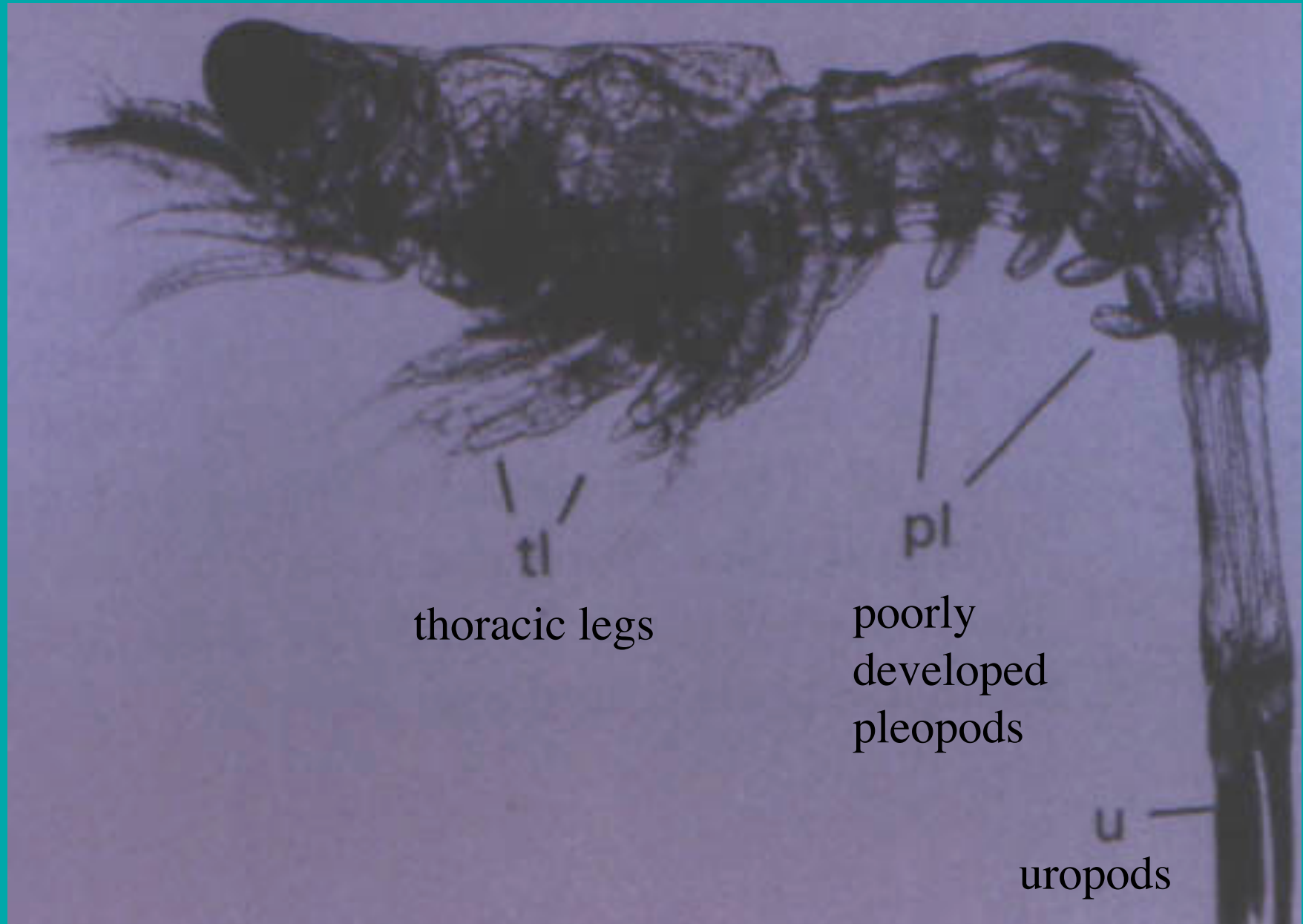
anterolateral horn



cypris







tl  
thoracic legs

pl  
poorly  
developed  
pleopods

u  
uropods

32





33

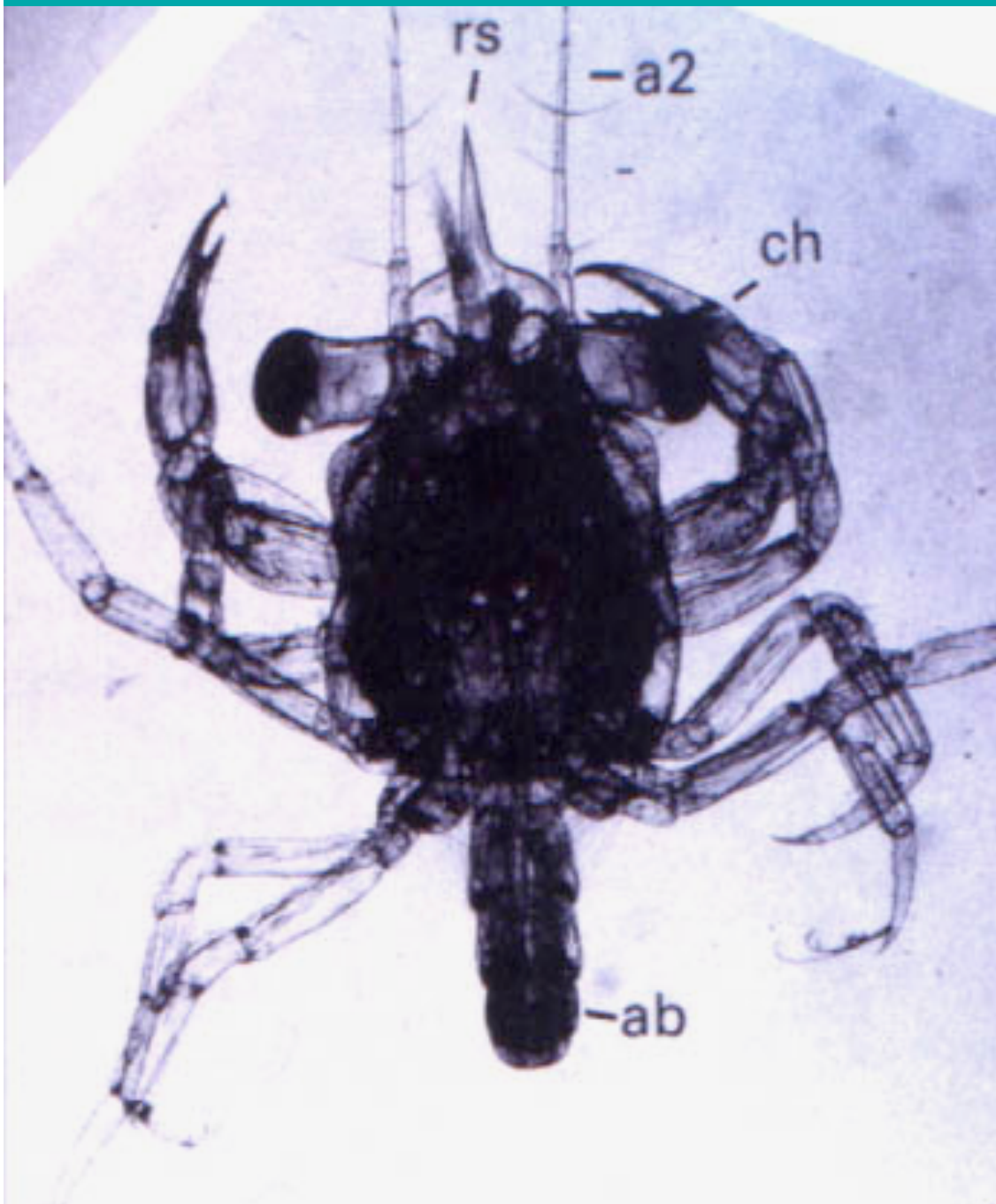


well developed  
pleopods







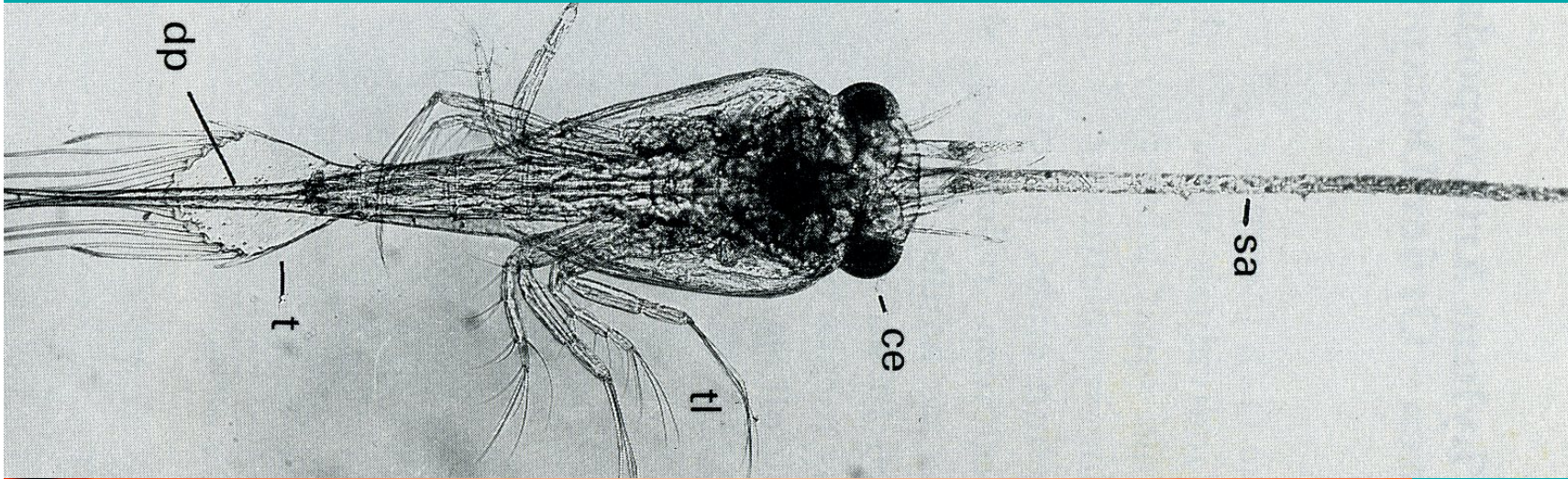


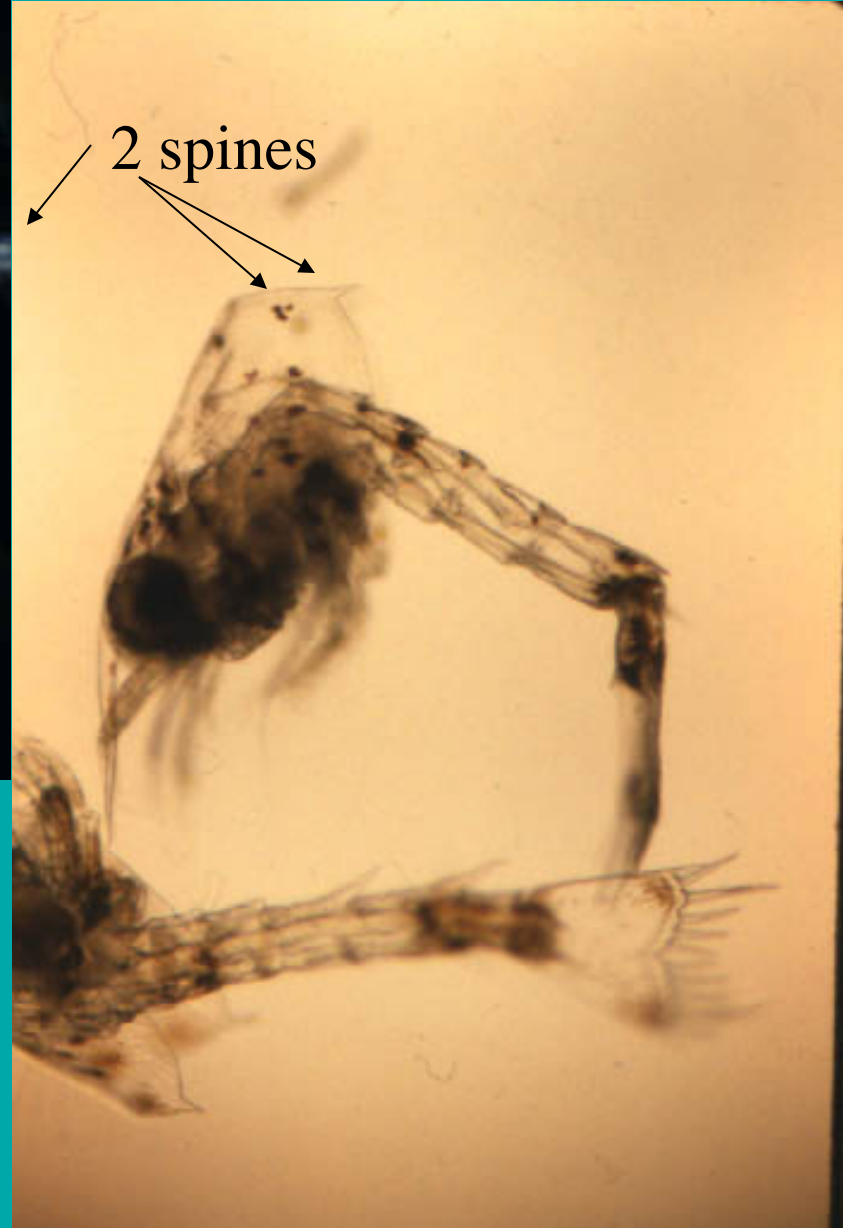
Antenna 1 and 2  
between eyes

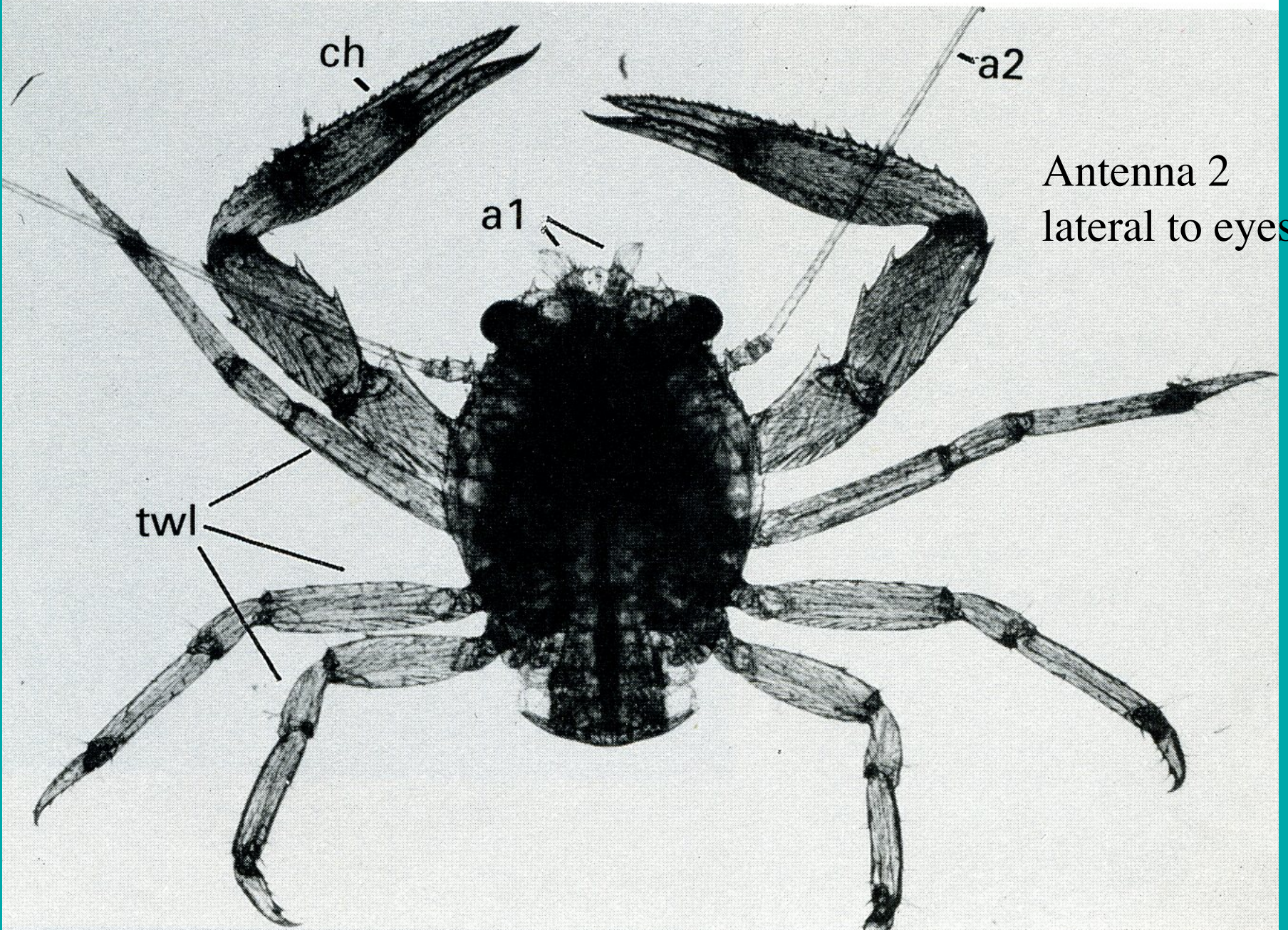


37







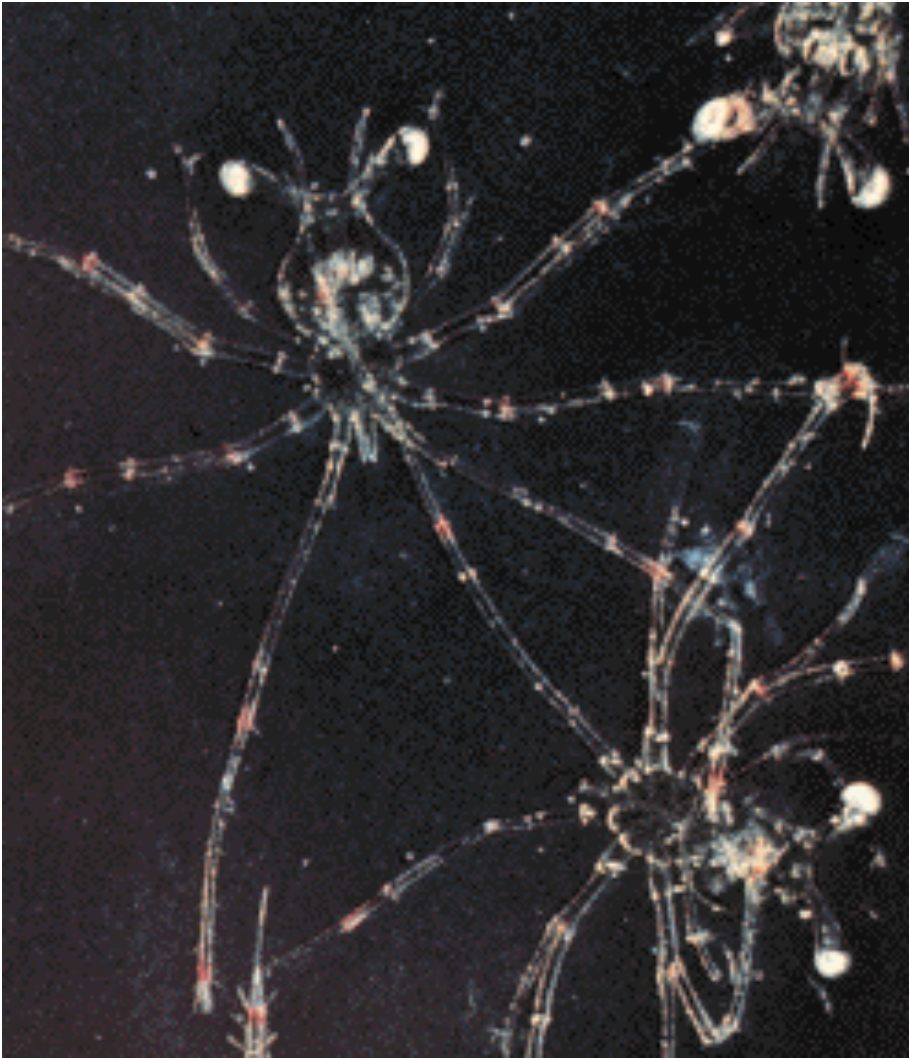


Antenna 2  
lateral to eyes



41

postlarva or puerulus



phyllosoma

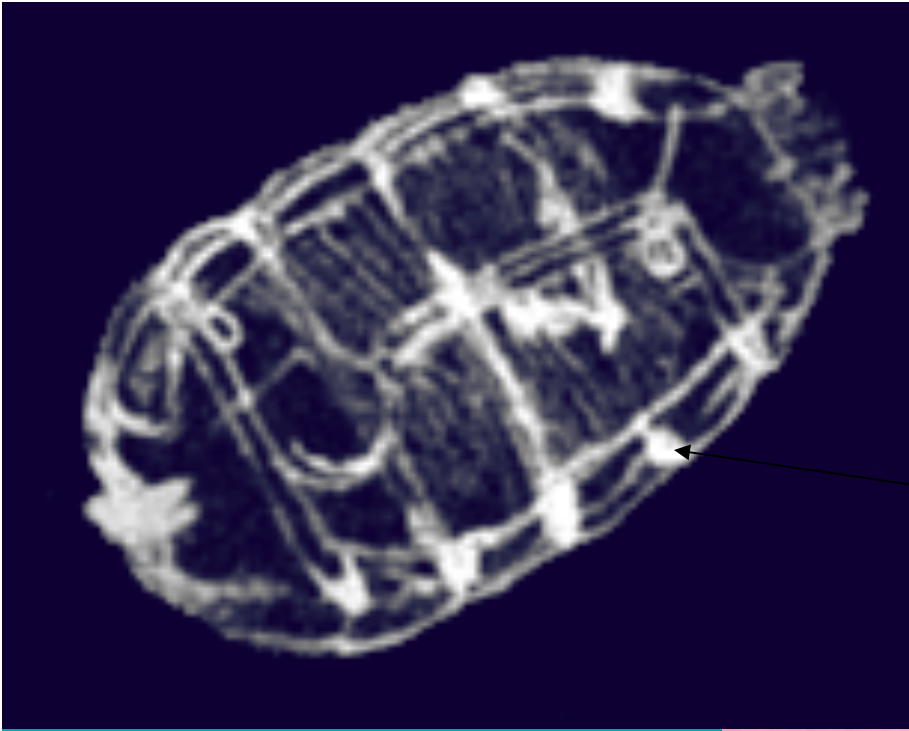




43

Doliolid-solitary stage

complete muscle bands



Aggregate stage

Doliolid-solitary stage



Salp. sp.

45



Salps-incomplete muscle bands

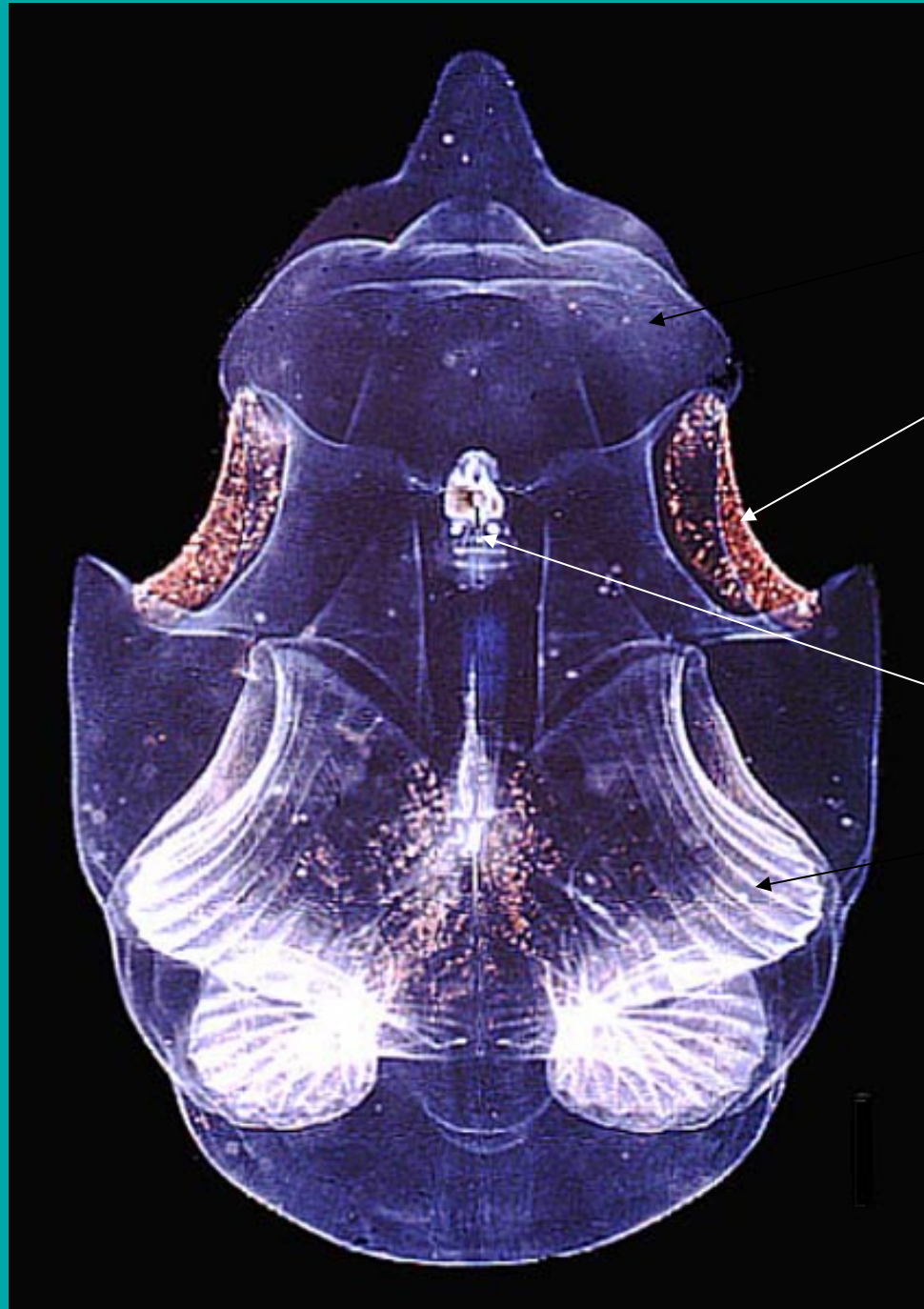
photo by  
A. Migotto



46



47

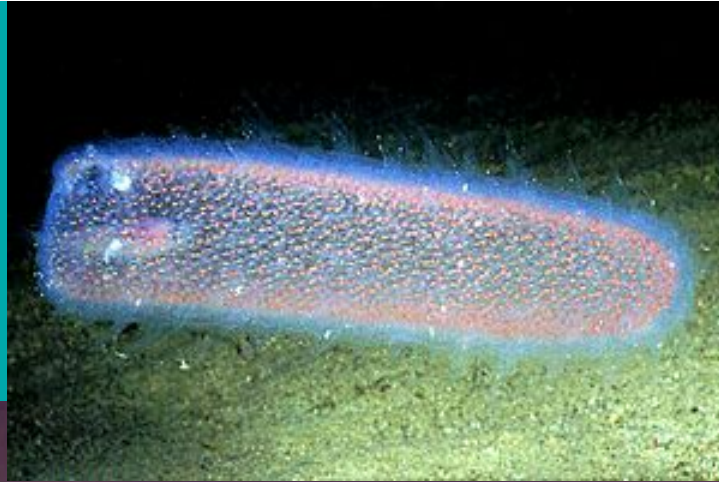


house

house filter

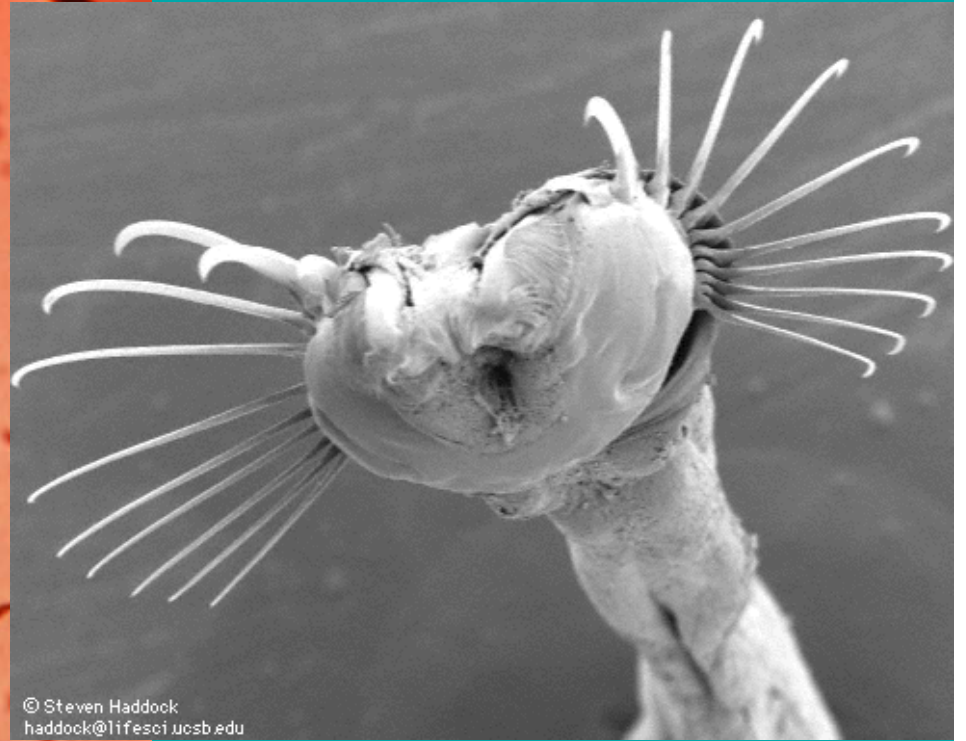
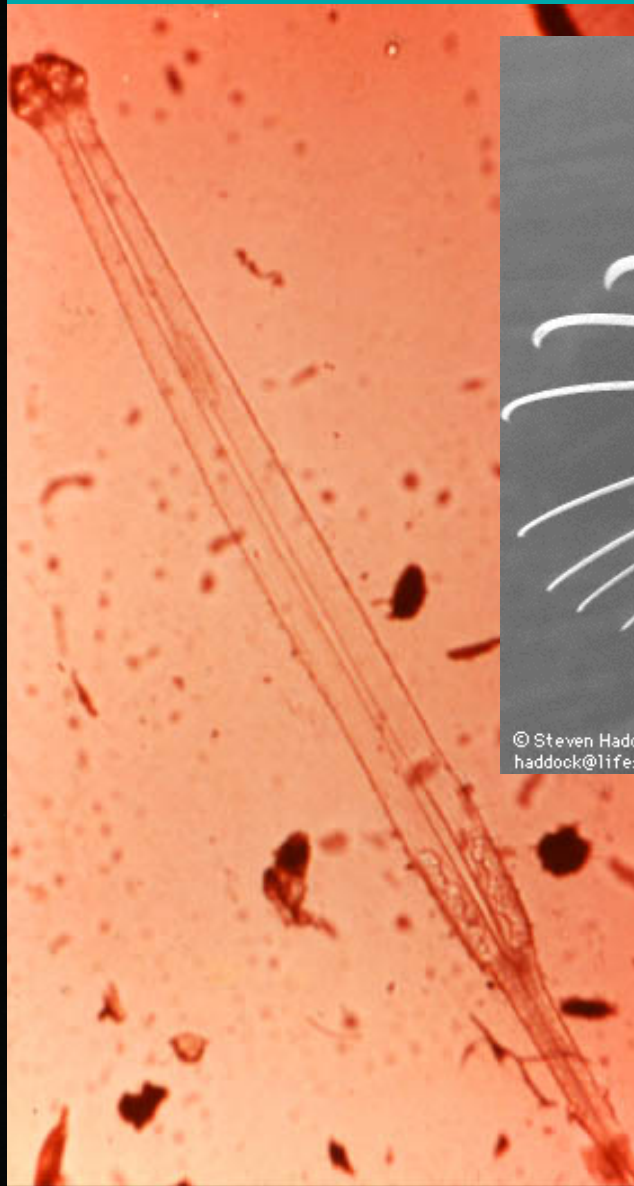
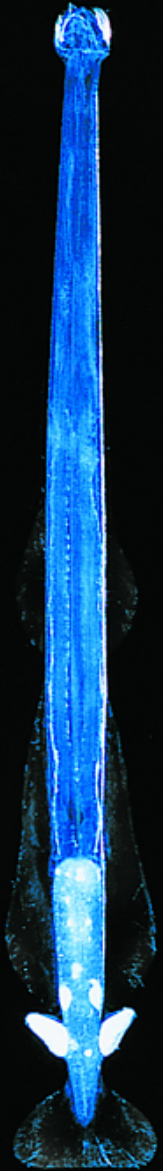
appendicularian

feeding filter



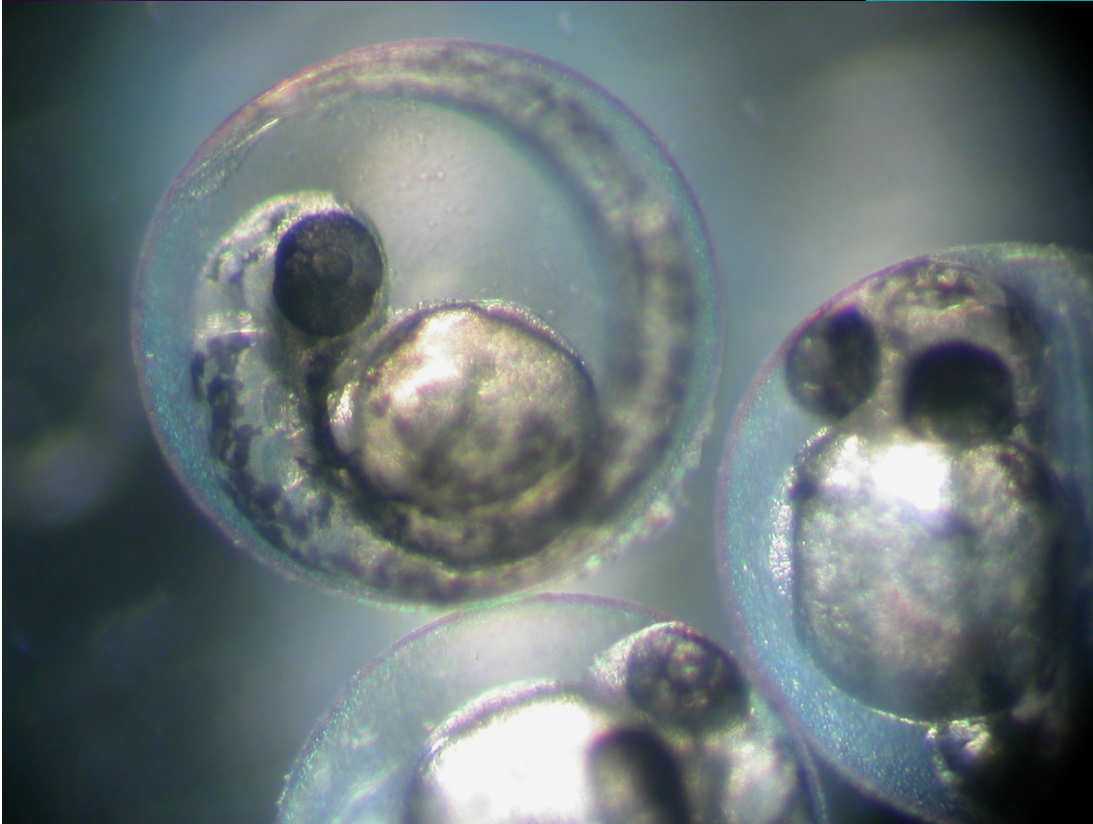
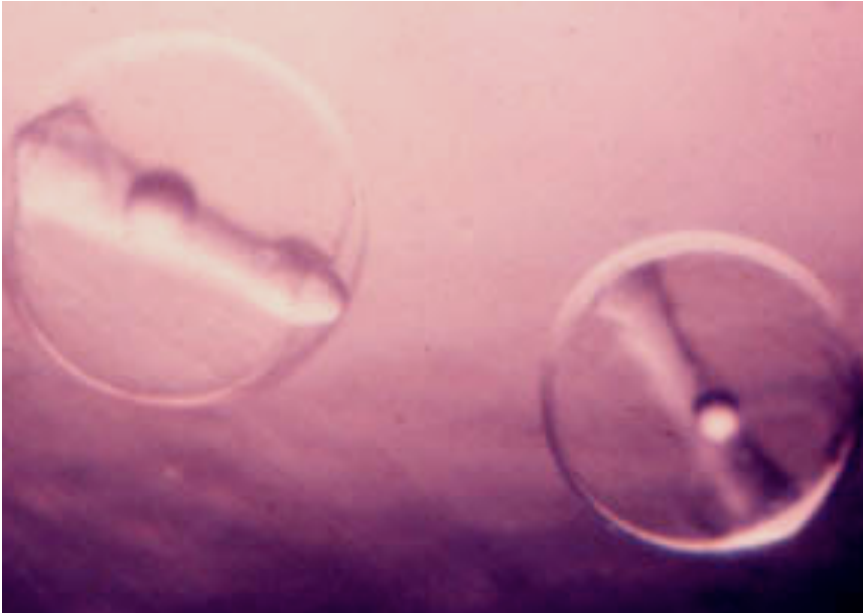






© Steven Haddock  
haddock@lifesci.ucsb.edu

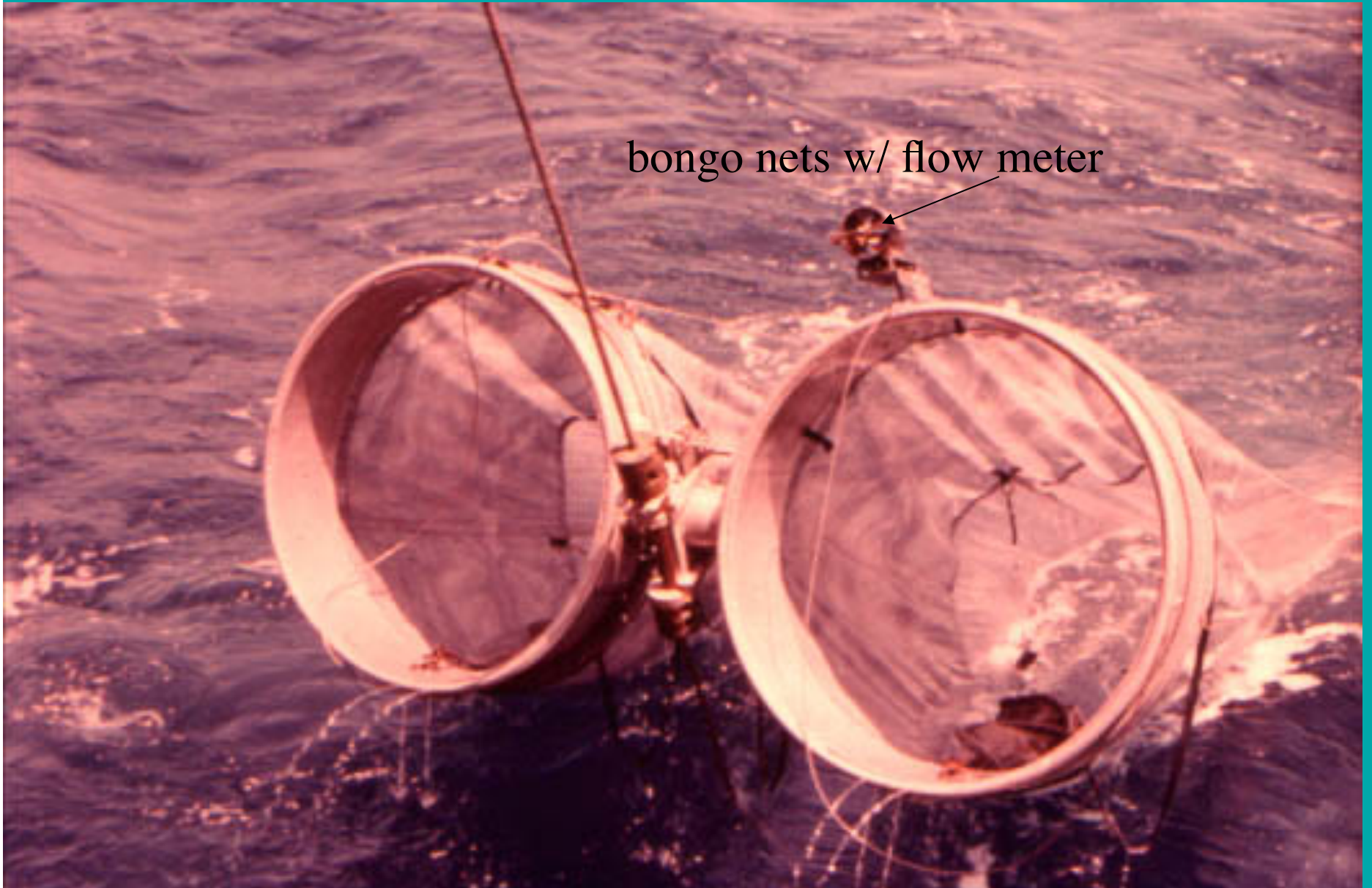
51



Norman Nicoll

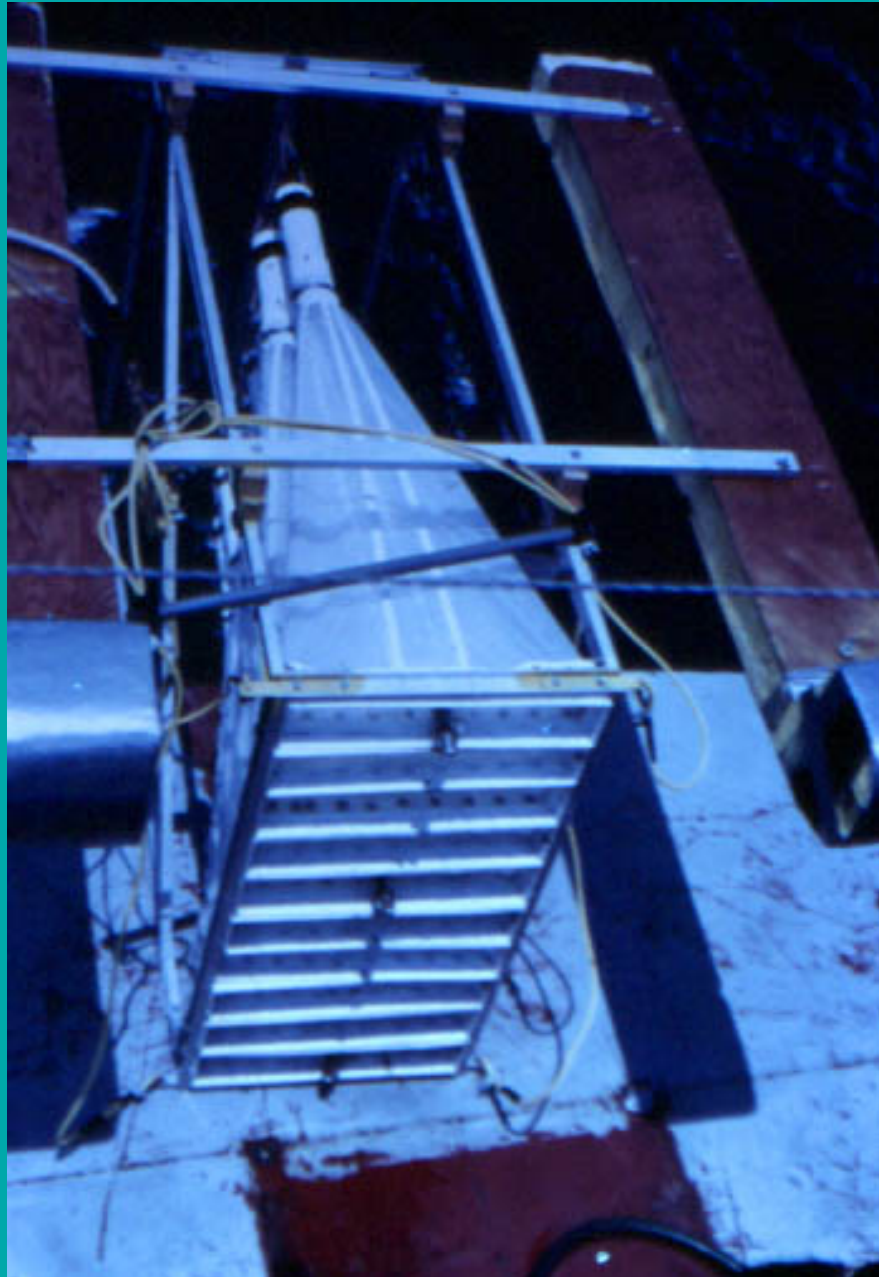


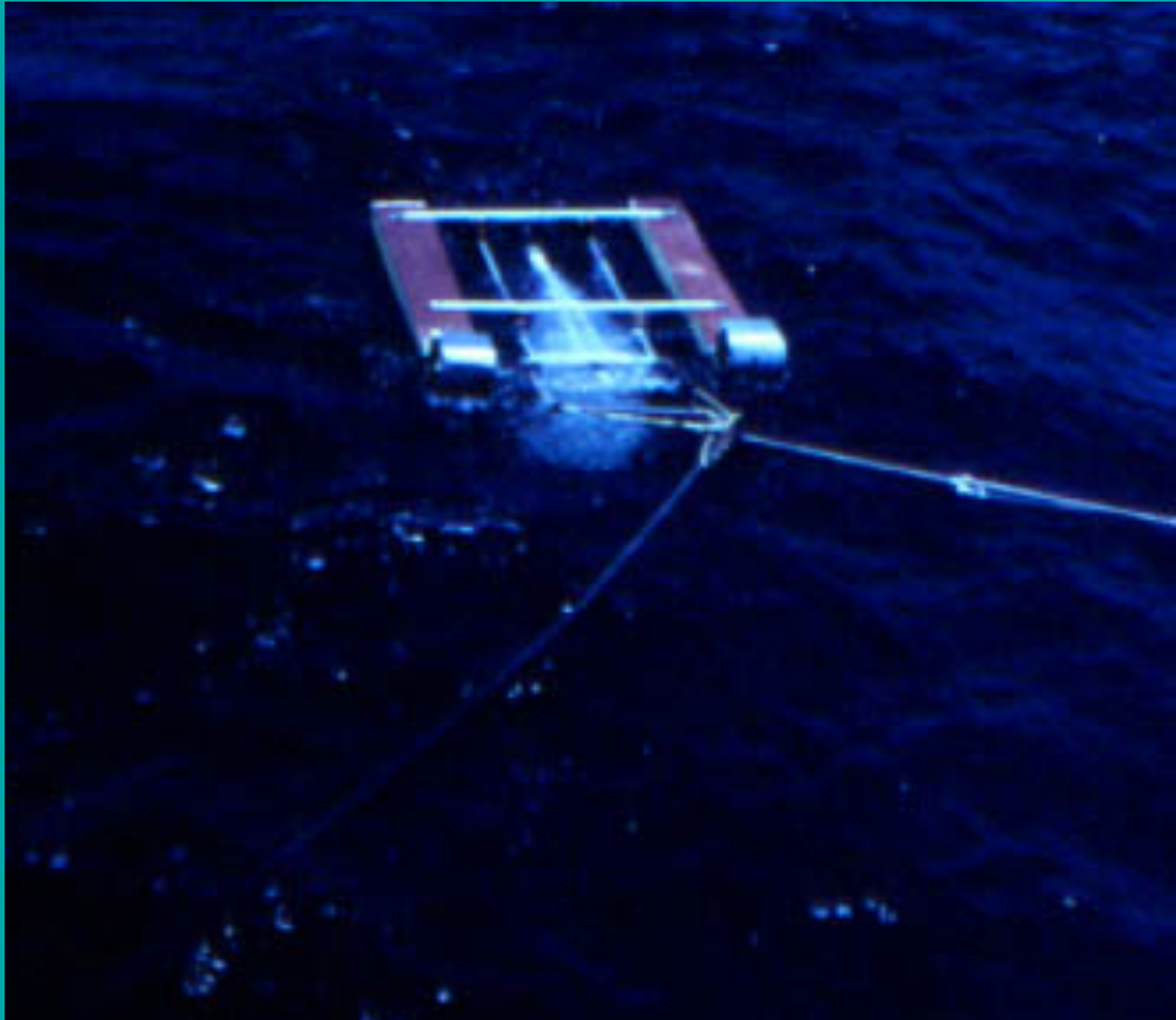
bongo nets w/ flow meter





55



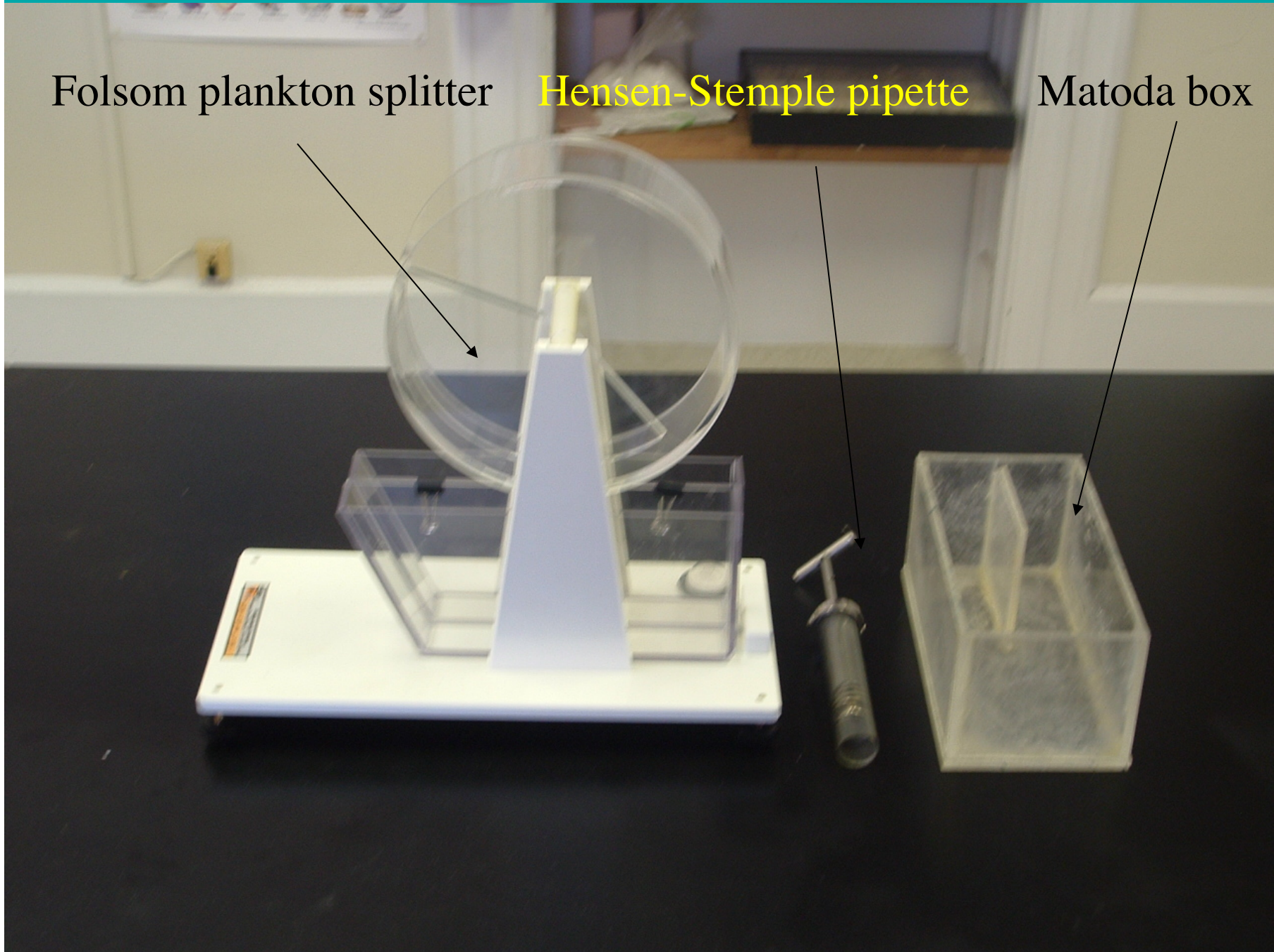




Folsom plankton splitter

Hensen-Stemple pipette

Matoda box



58



Hensen-Stemple pipettes

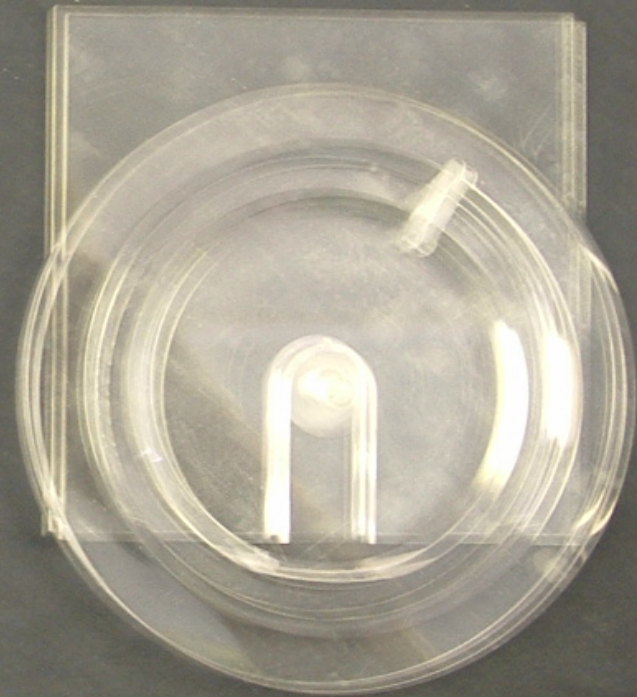


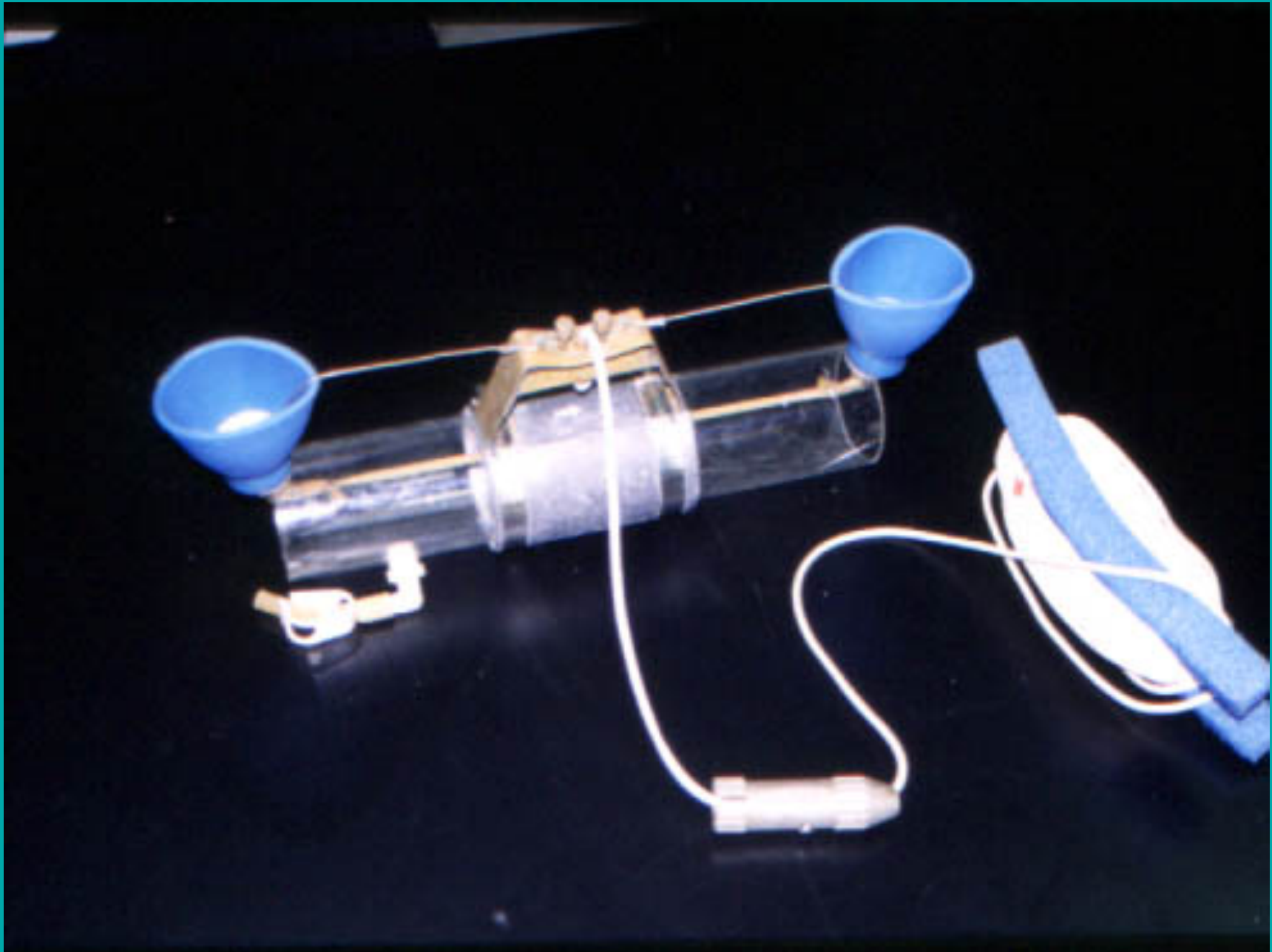
Folsom plankton splitter

Bogorov chamber



counting wheel





61

