



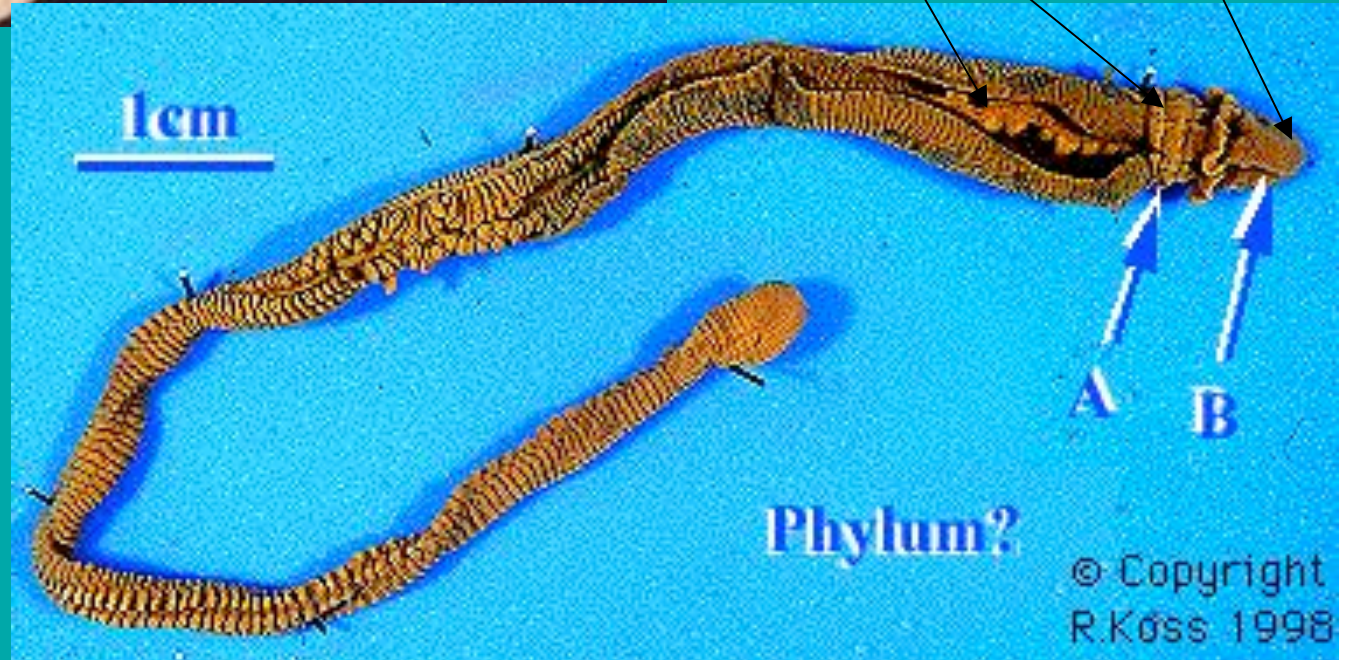
1

proboscis

gill slits

collar

Phylum  
Hemichordata

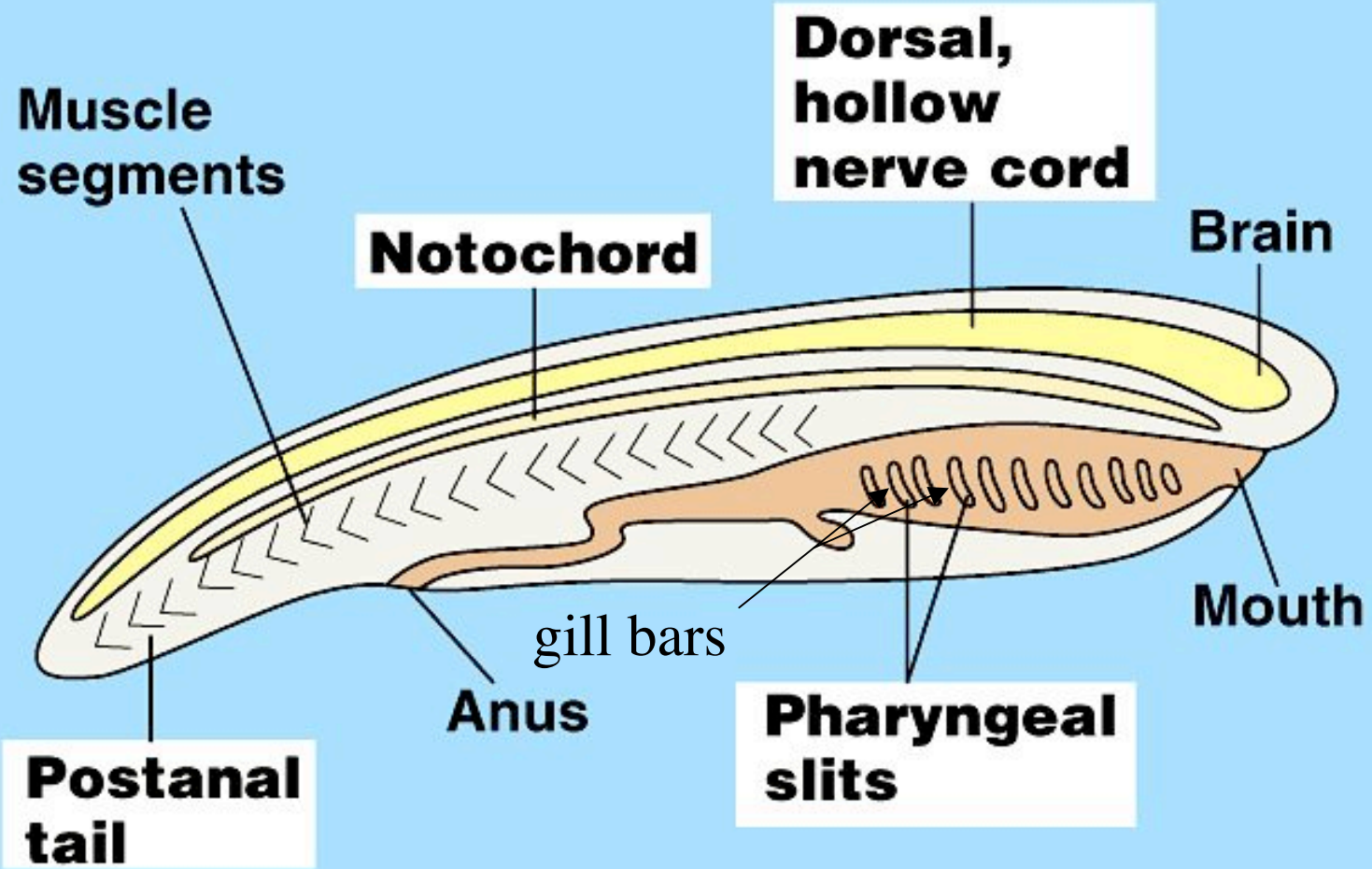


1cm

Phylum?

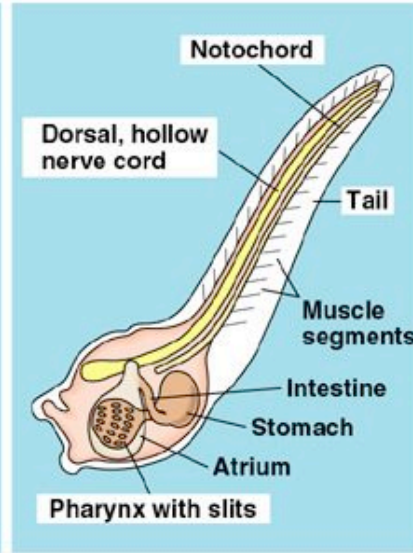
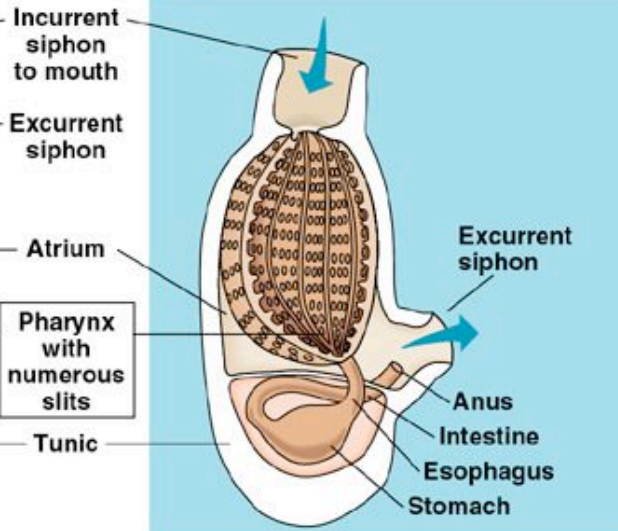
© Copyright  
R.Koss 1998

2- p. 673





3



(a)

tunicate adult

(b)

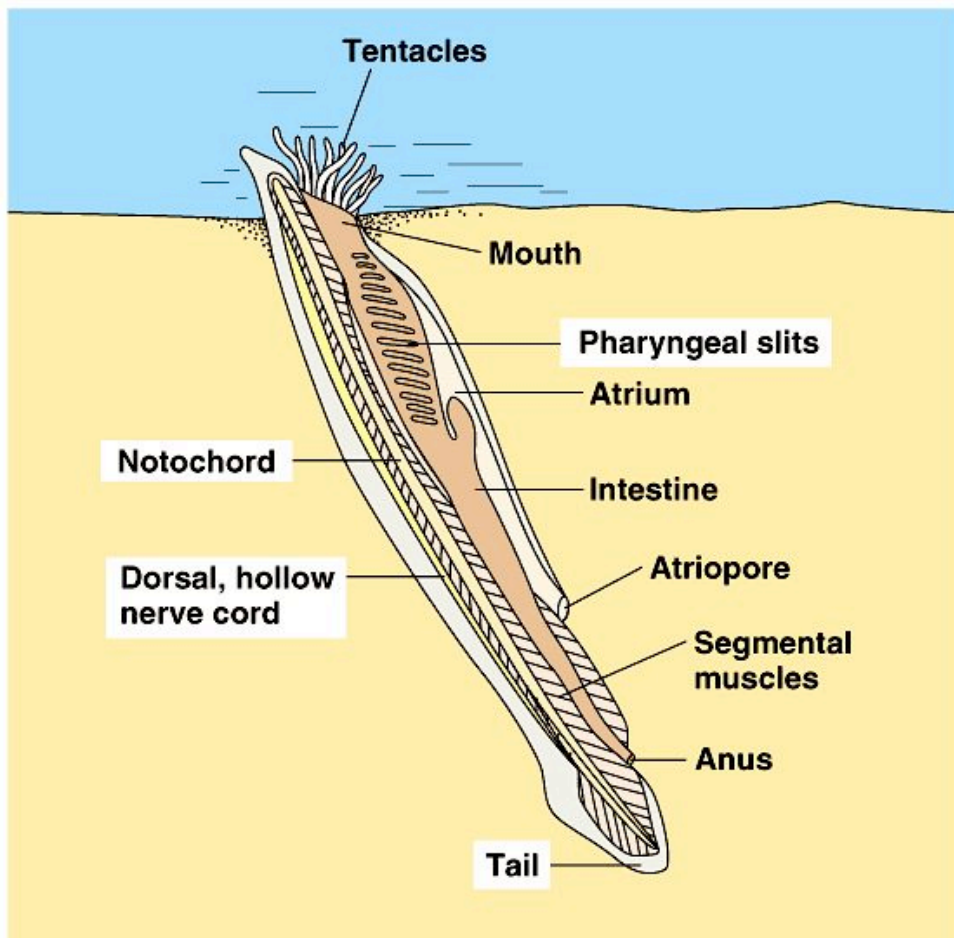
(c) tunicate larva

Copyright © Pearson Education, Inc., publishing as Benjamin Cummings.

incurrent siphon

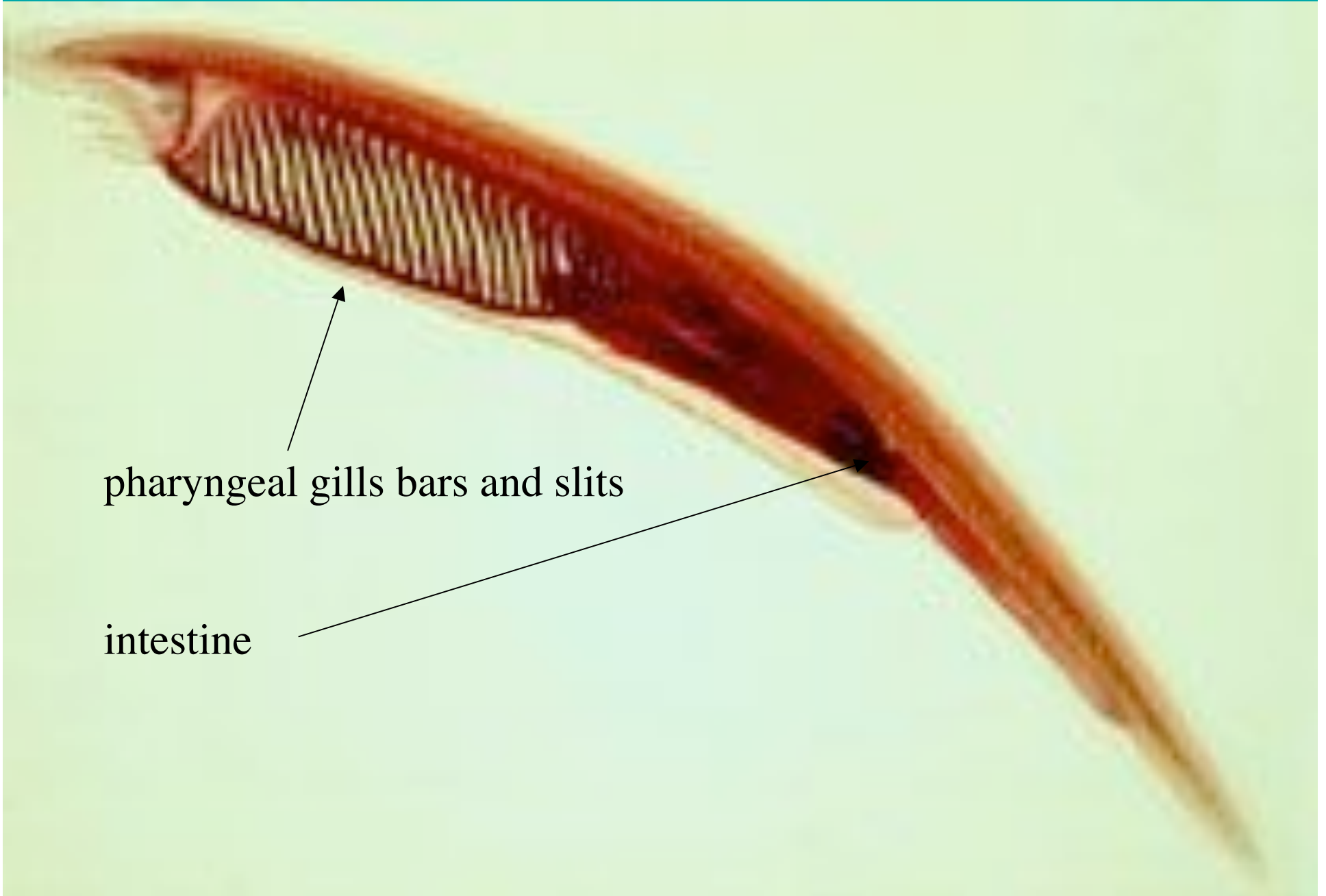
excurrent siphon





(a)

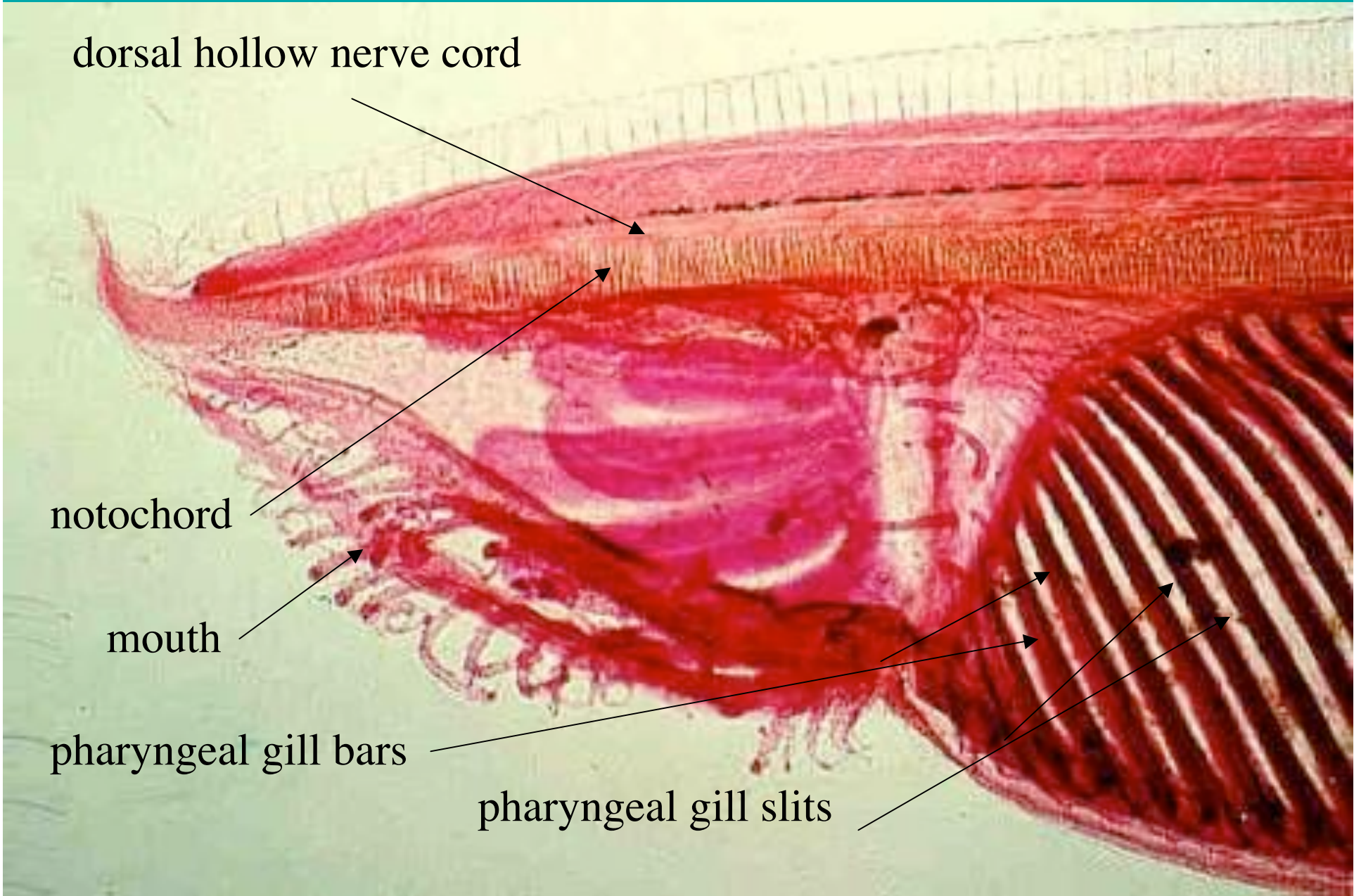
Copyright © Pearson Education, Inc., publishing as Benjamin Cummings.



pharyngeal gills bars and slits

intestine





dorsal hollow nerve cord

notochord

mouth

pharyngeal gill bars

pharyngeal gill slits

7

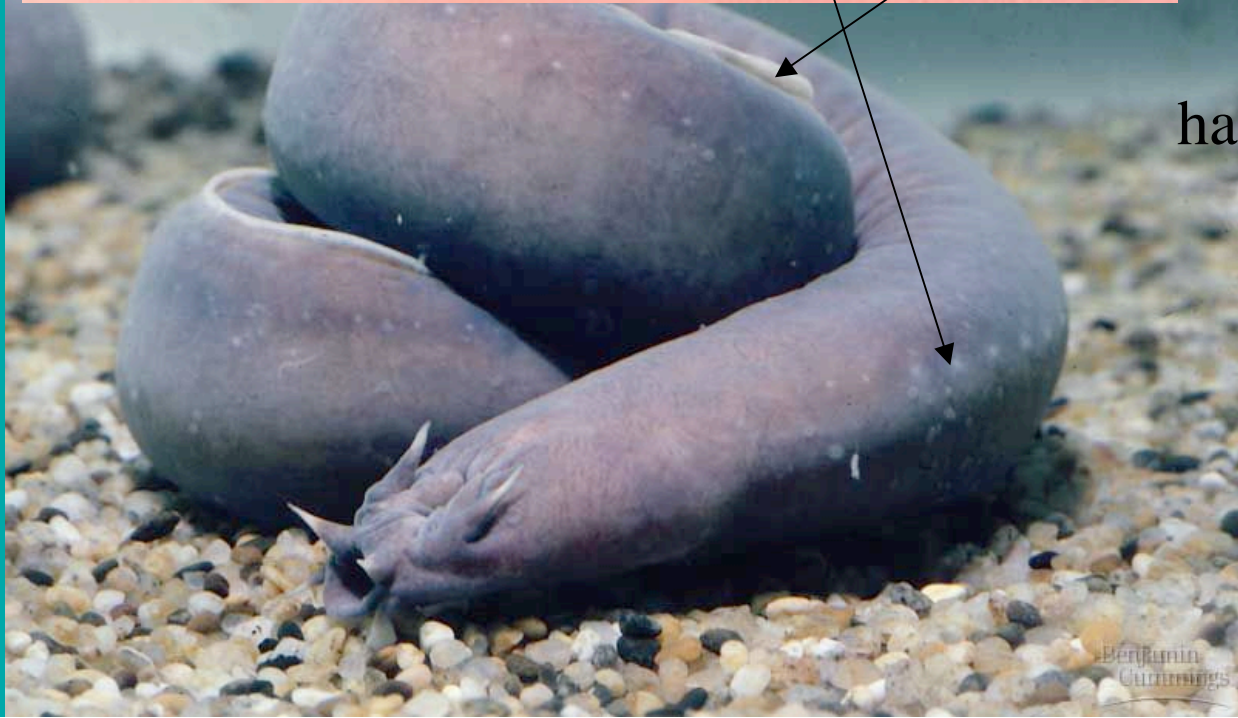
lamprey

caudal fin

gill slits

dorsal fin

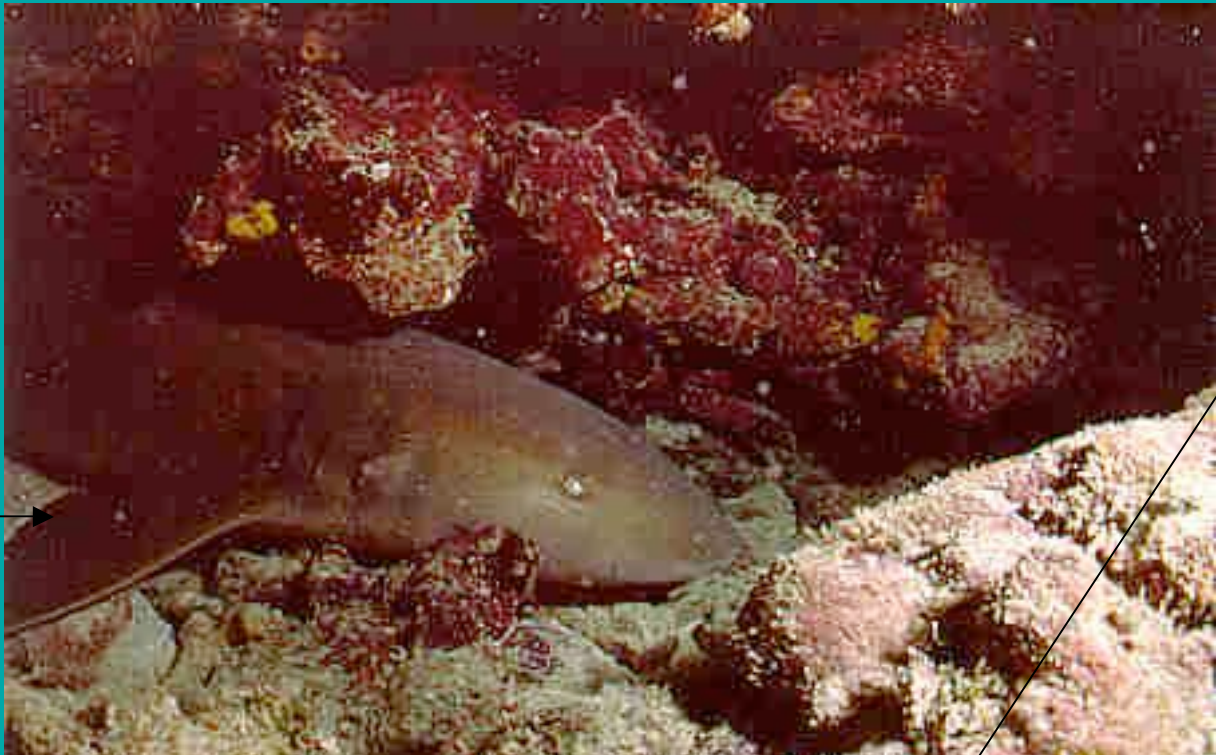
hagfish







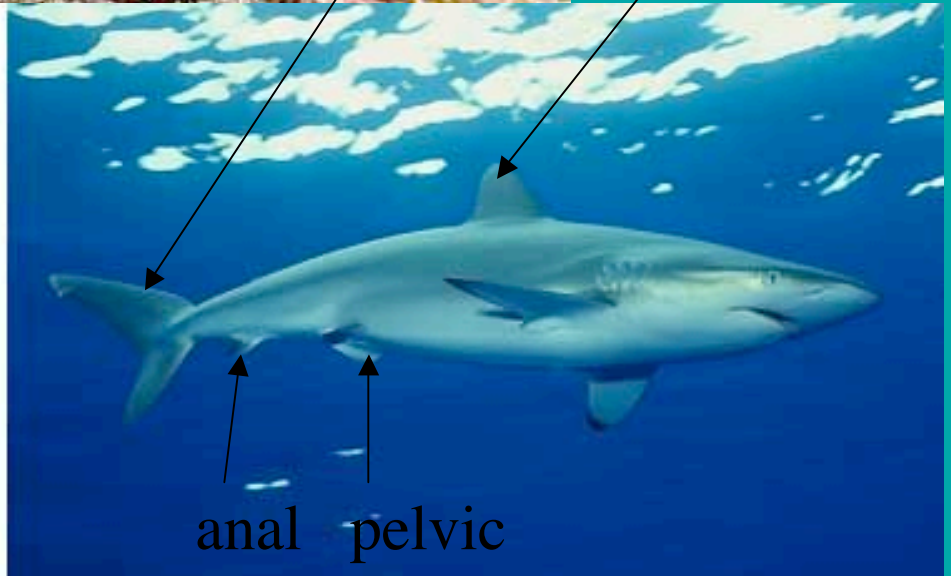




pectoral

caudal

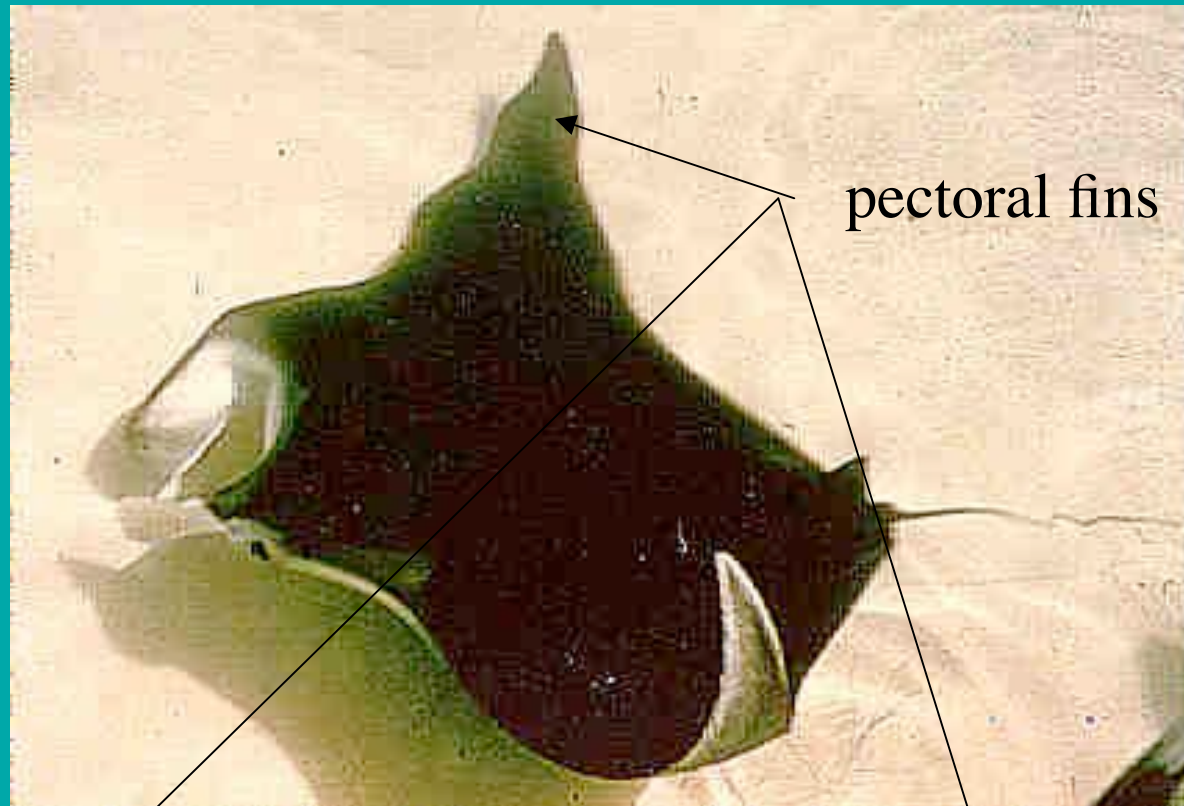
dorsal



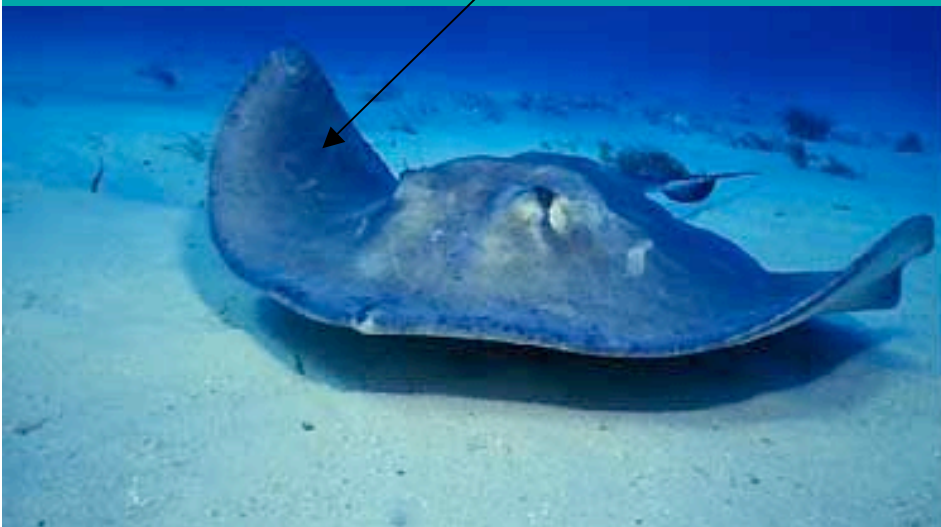
anal

pelvic

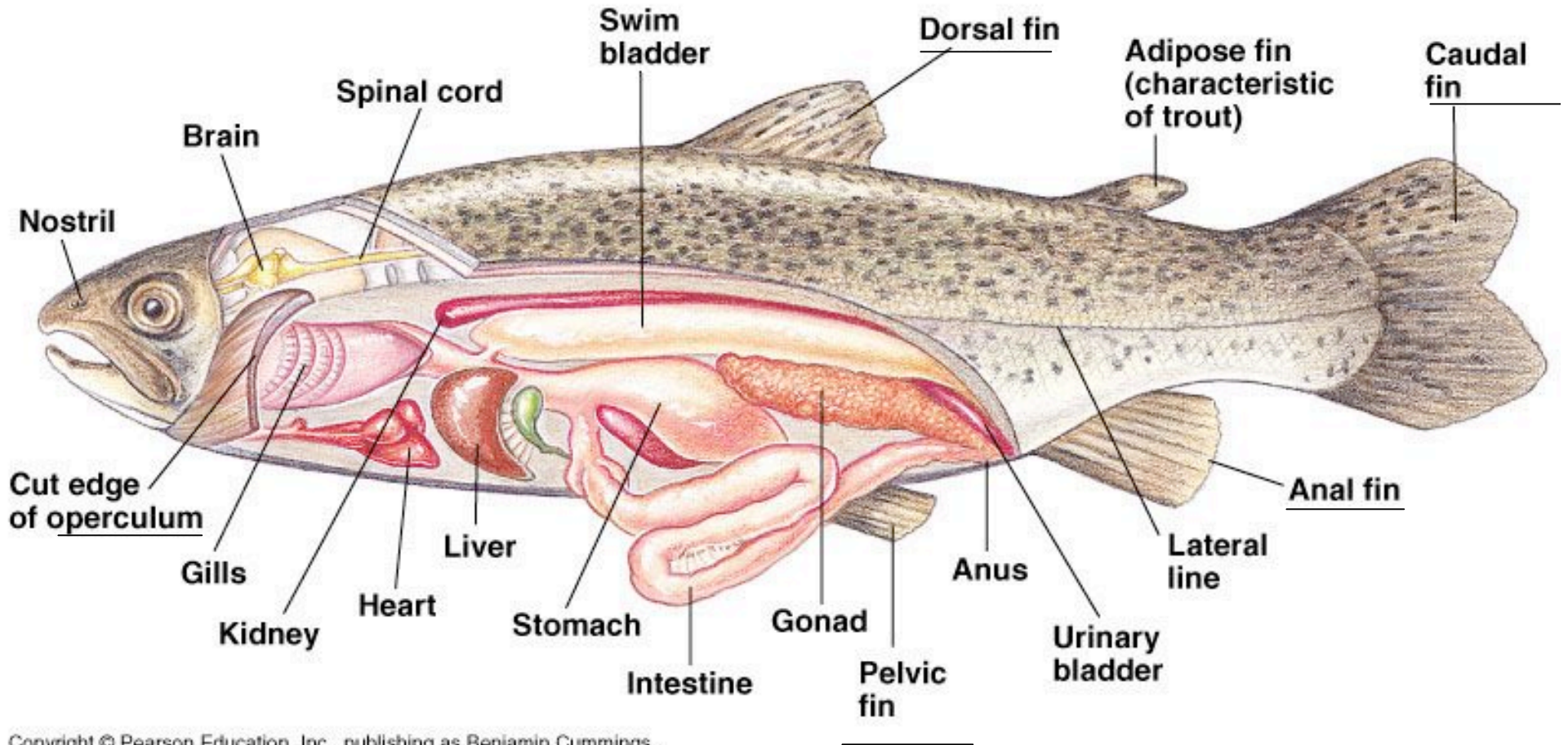
10



pectoral fins









pectoral fin

anal fin



13







15







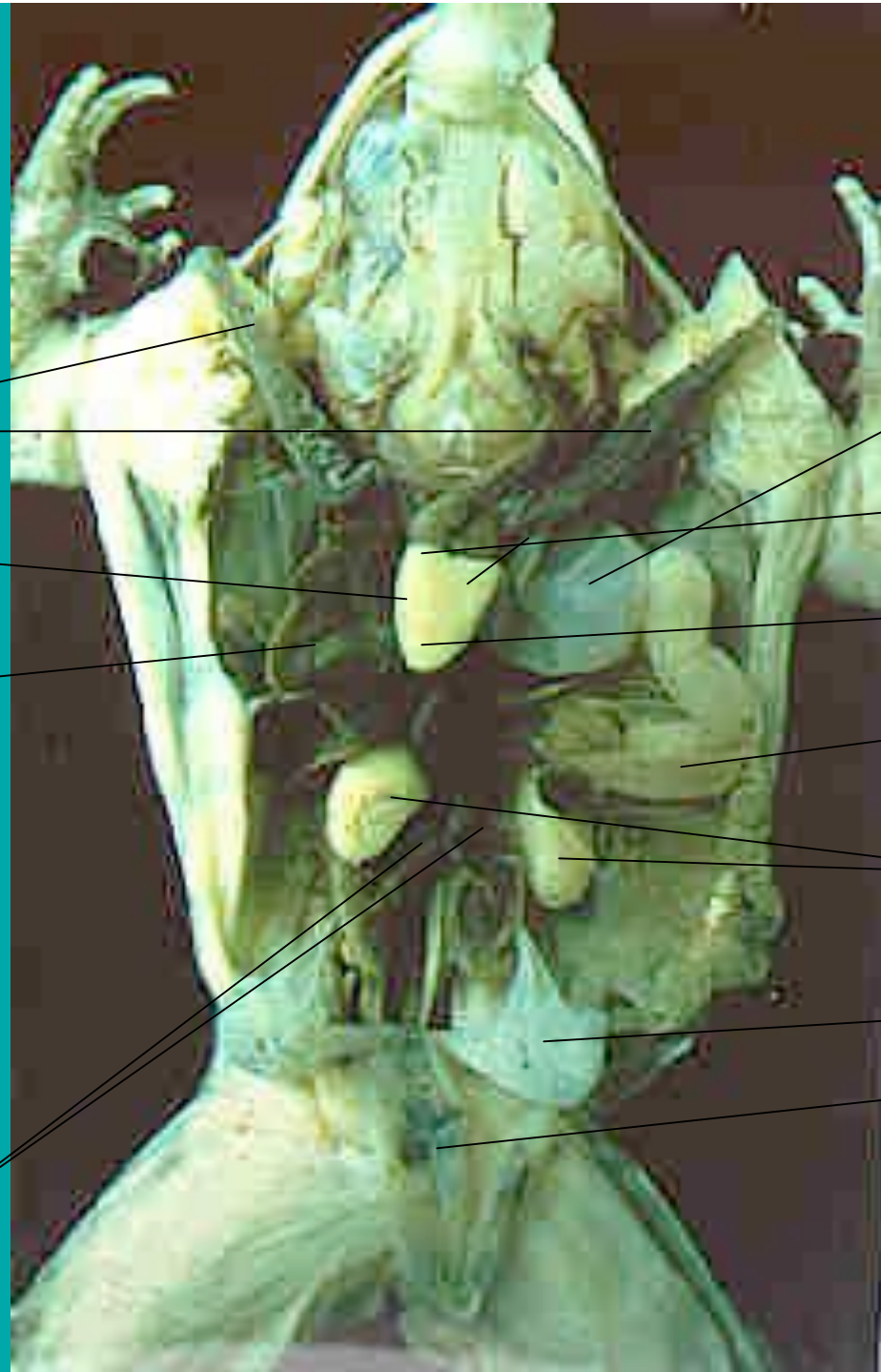
17

lungs

heart

liver

kidneys



stomach

atria

ventricle

small  
intestine

testes

bladder

large  
intestine

18

lung

liver

heart

lung

fat bodies

small  
intestine





19

liver

fat bodies

heart

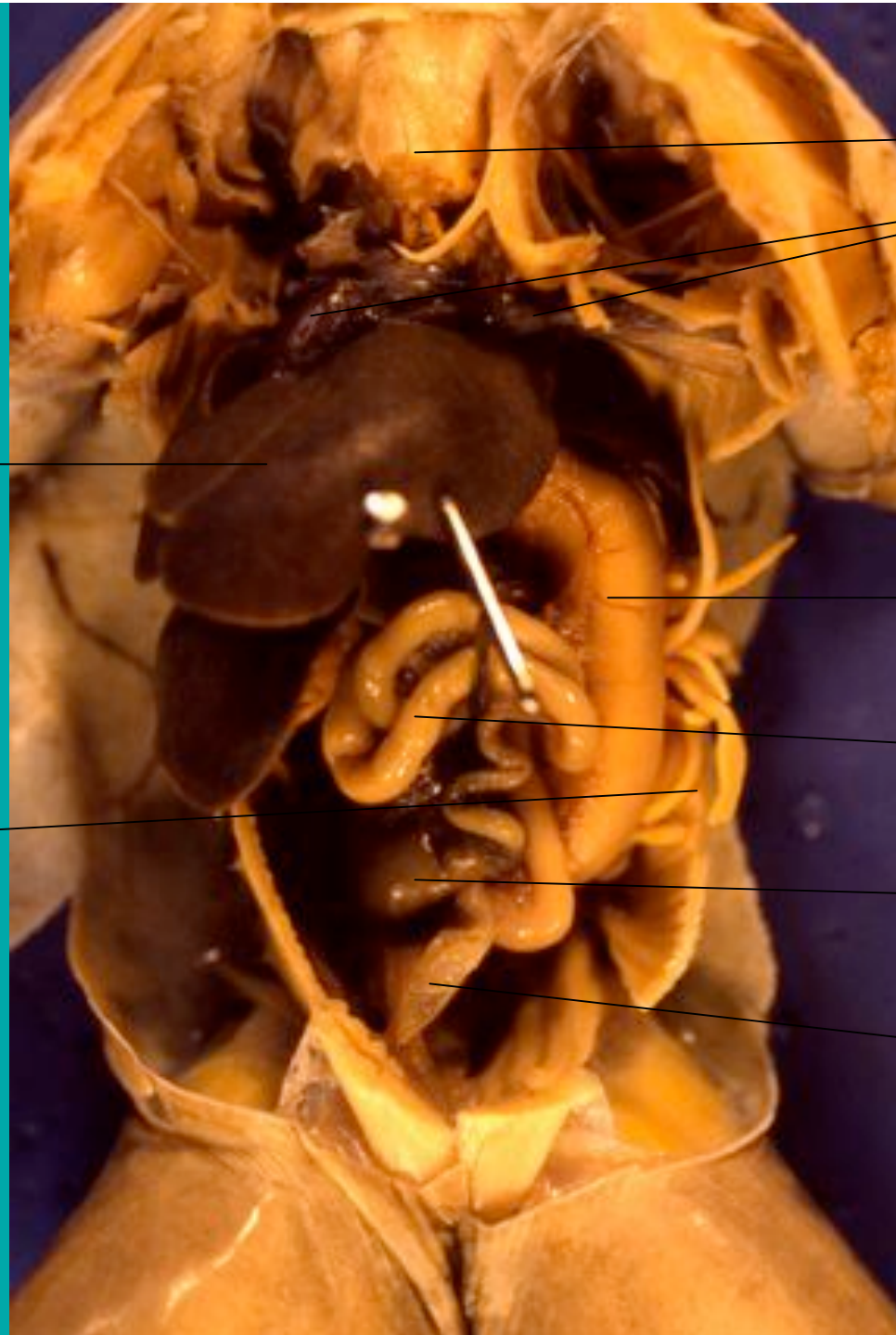
lungs

stomach

small intestine

large intestine

urinary bladder

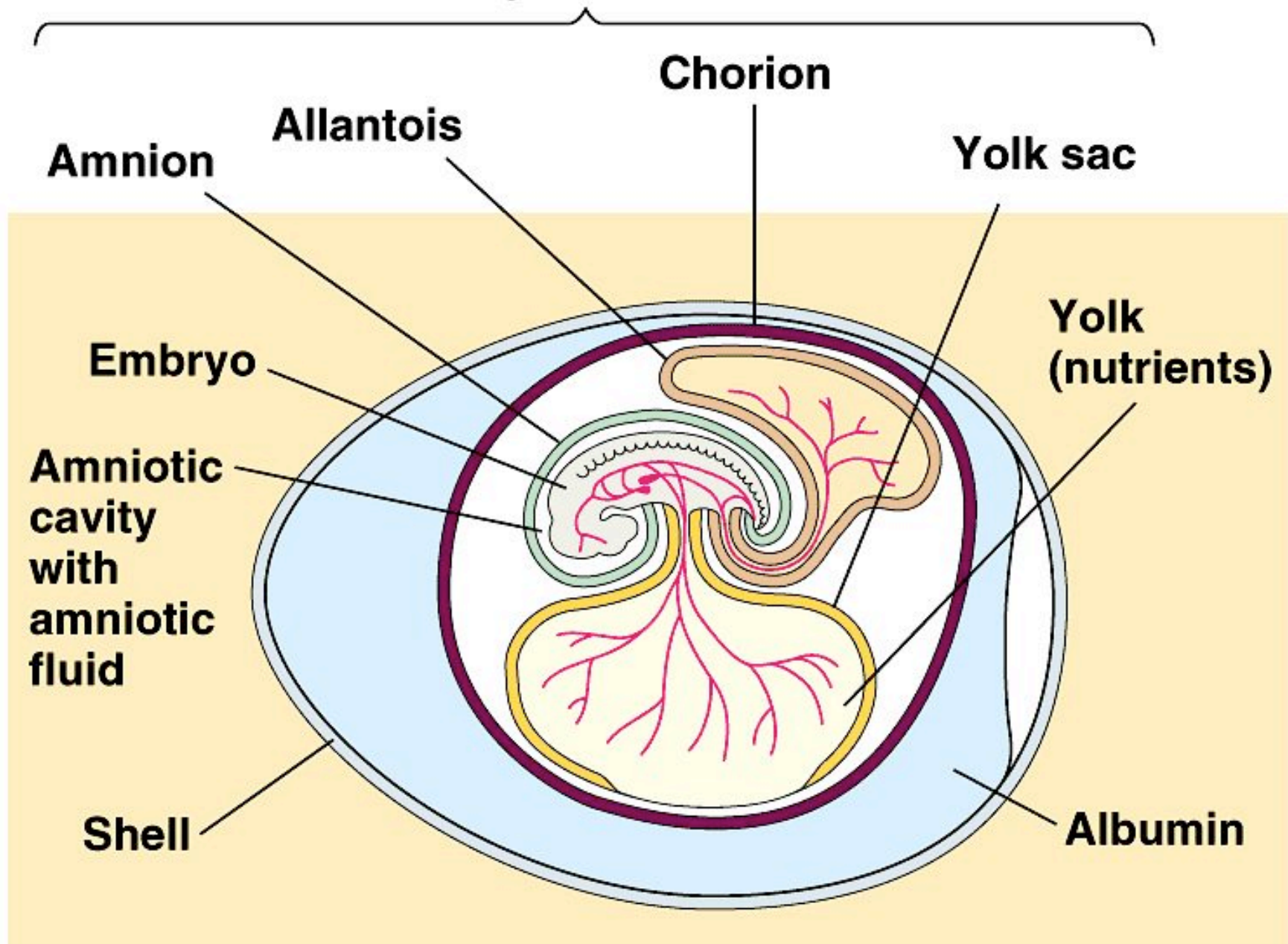








## 21 Extraembryonic membranes













25

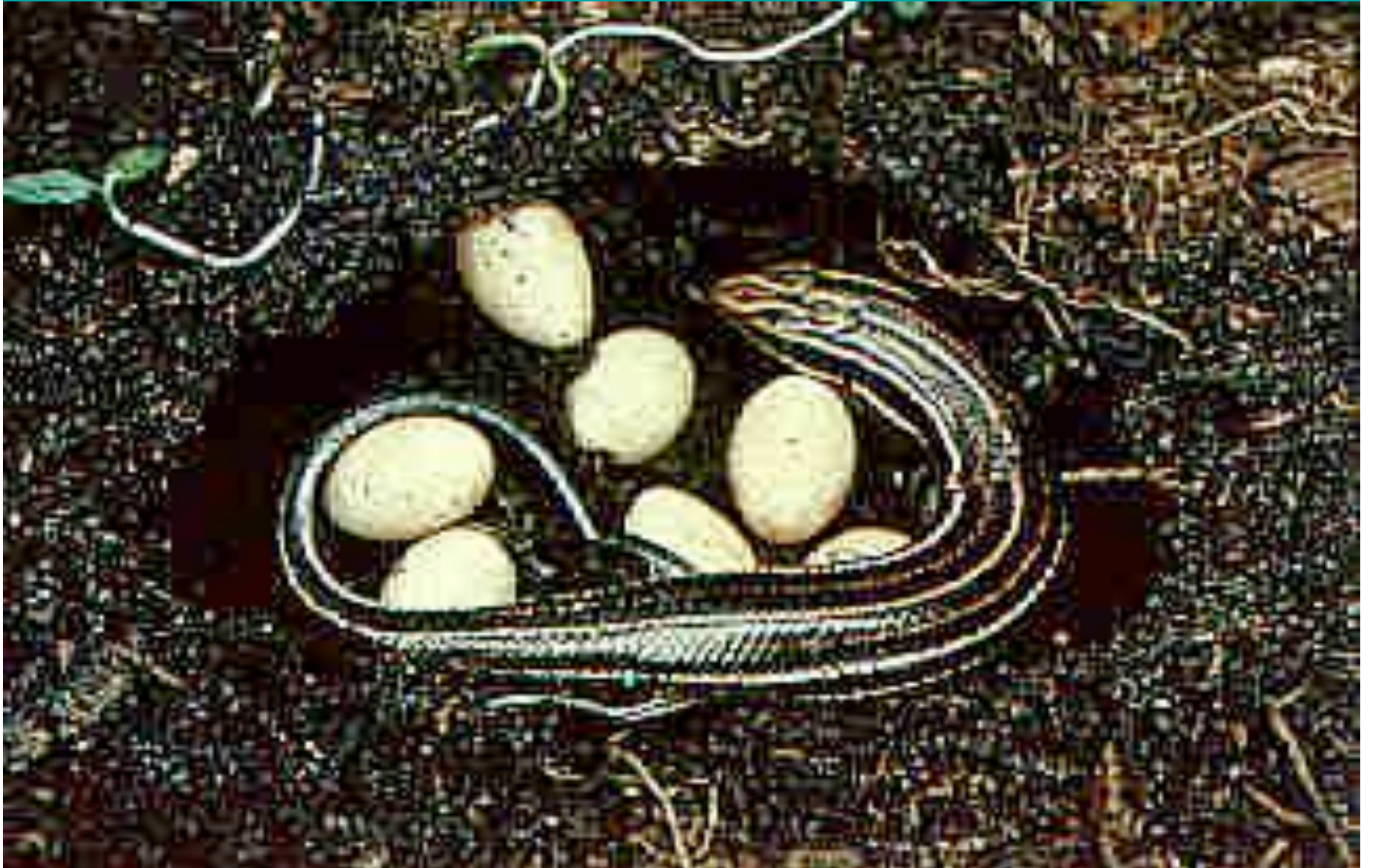




26



















31







monotreme



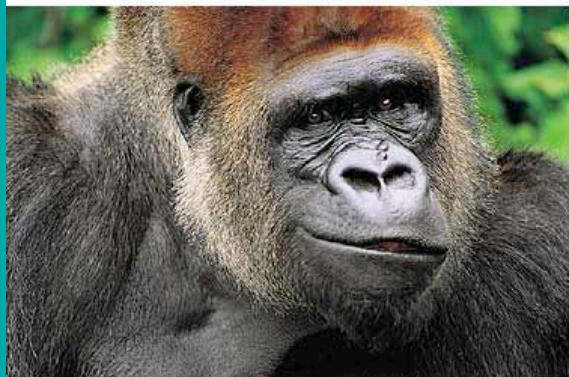
33



marsupial



placental=  
eutherian









35



36

