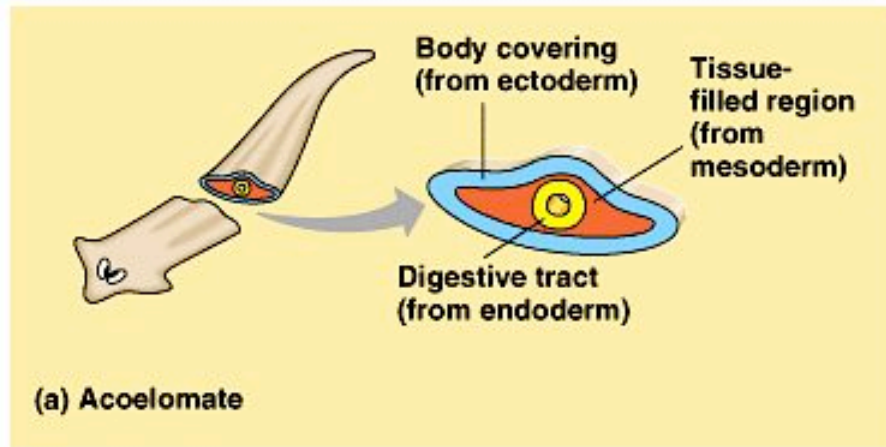
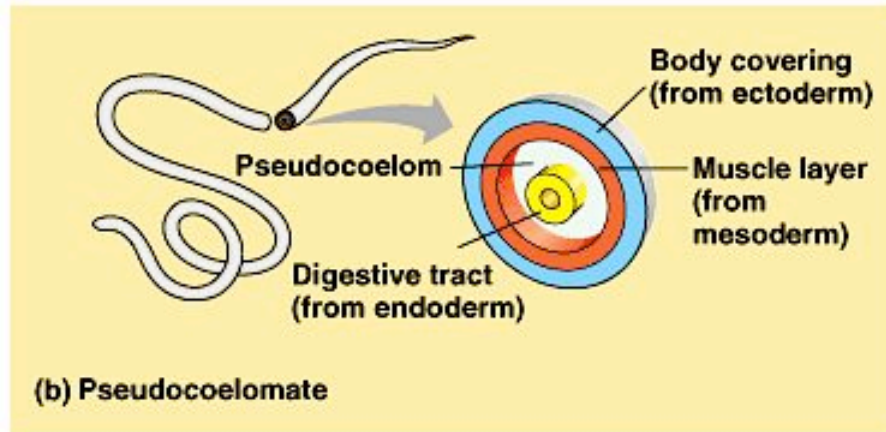


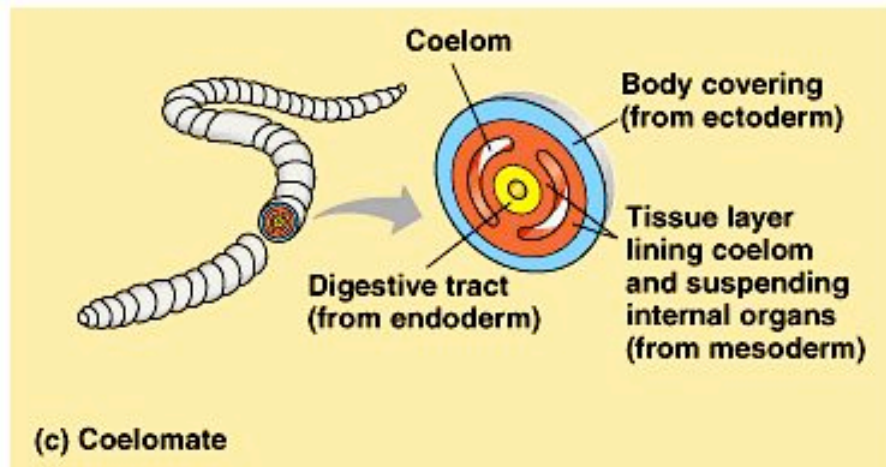
acoelomate coelomate pseudocoelomate



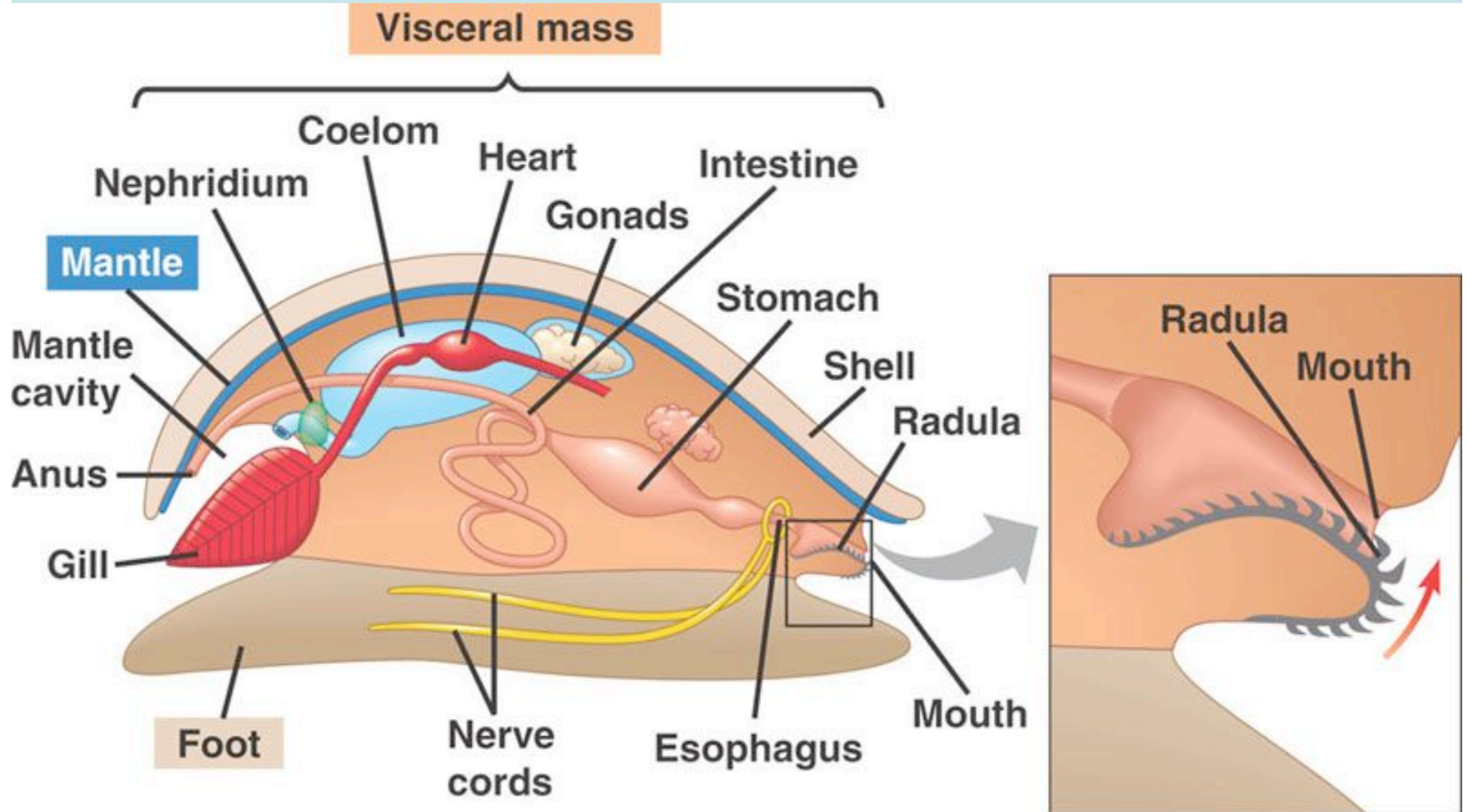
(a) Acoelomate



(b) Pseudocoelomate

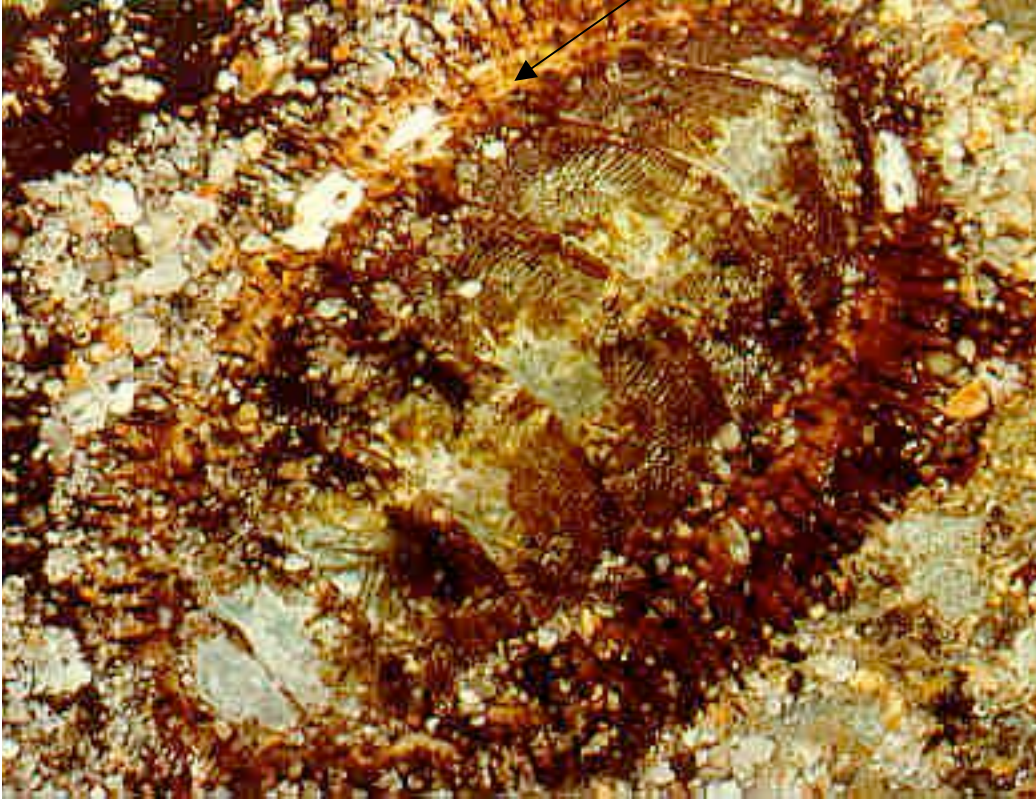


(c) Coelomate

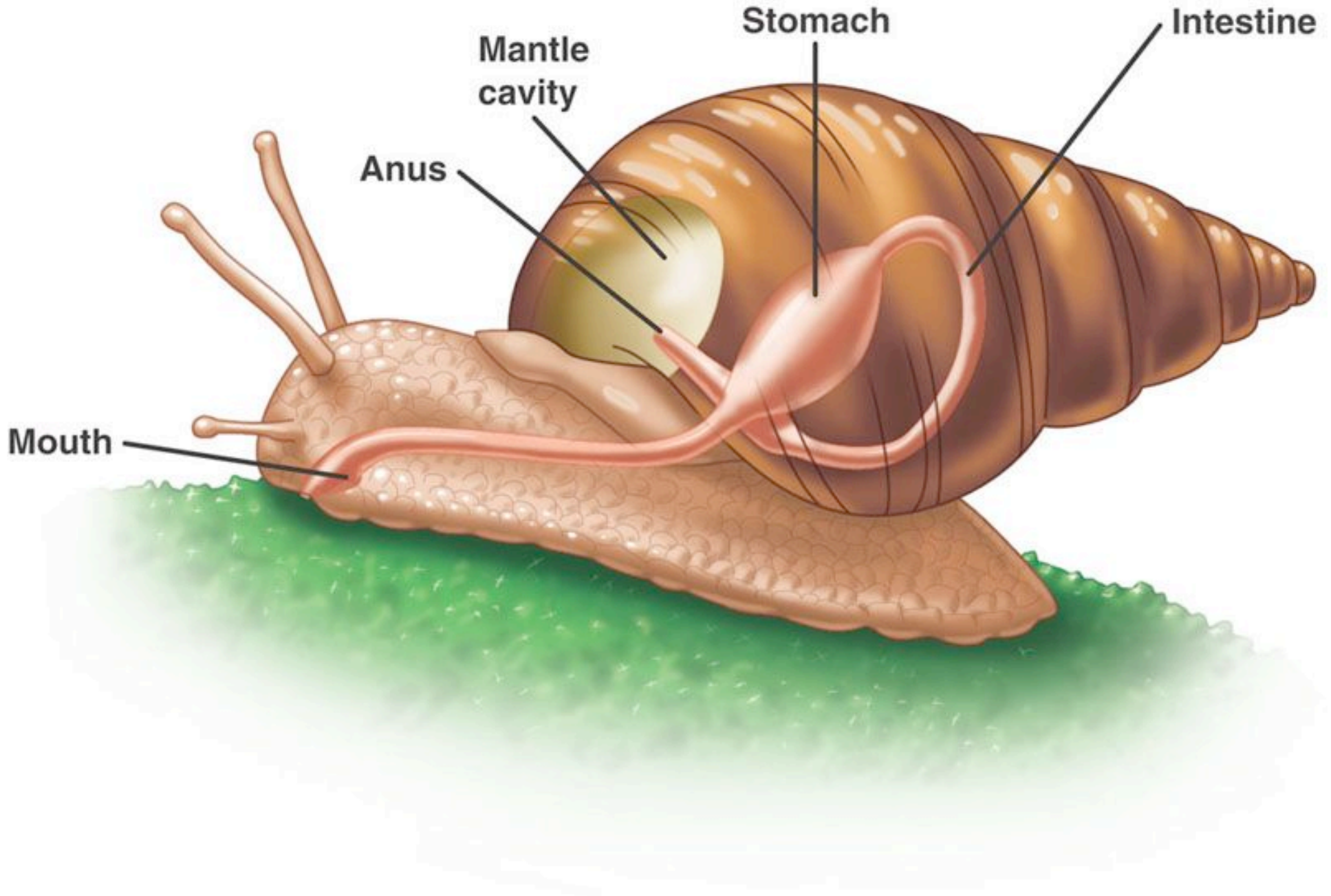


4

mantle



## 5 Torsion in a gastropod





6





8

land slug



(a) A land snail



(b) A sea slug. Nudibranchs, or sea slugs, lost their shell during their evolution.

sea hare





9



10

Asian green mussel

oysters



11

D

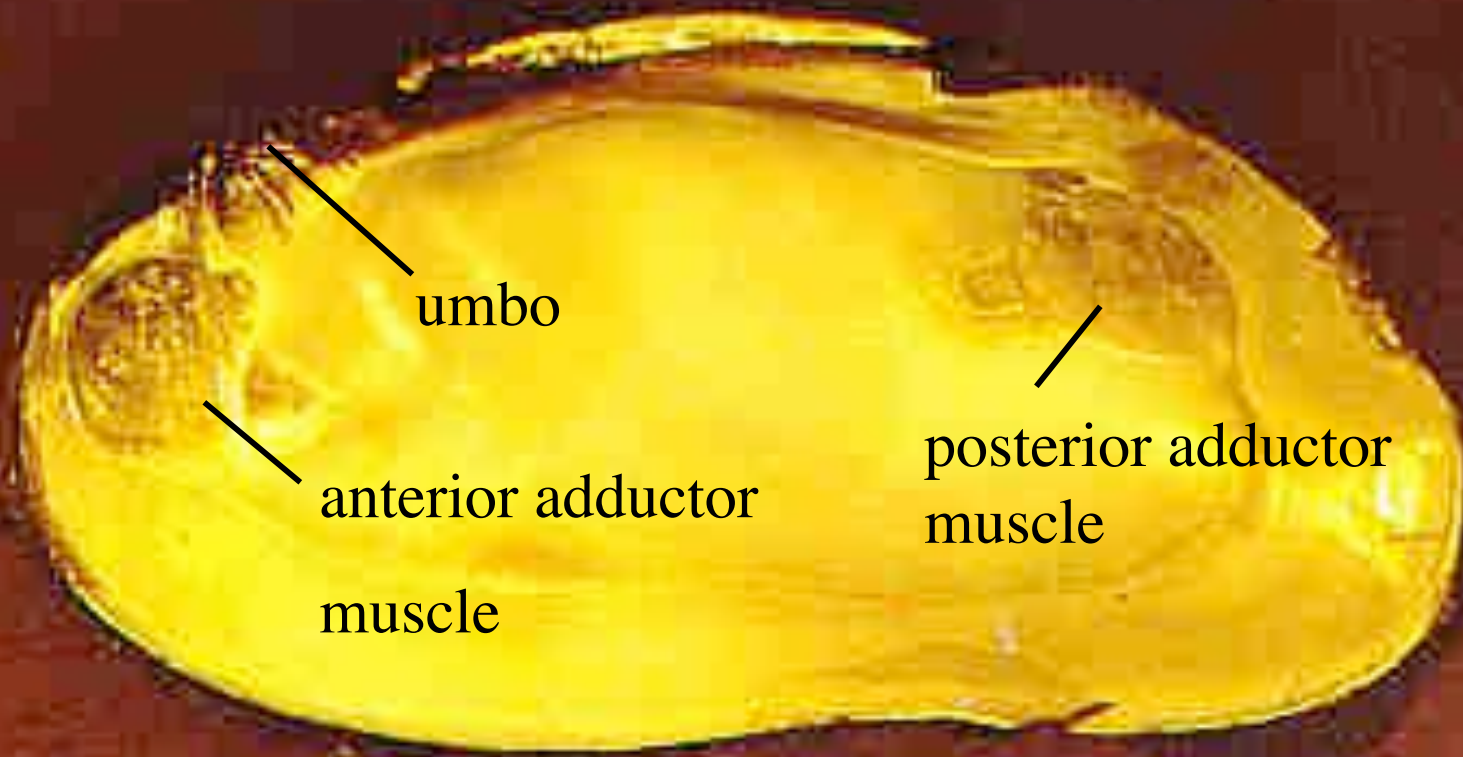
umbo

A

P

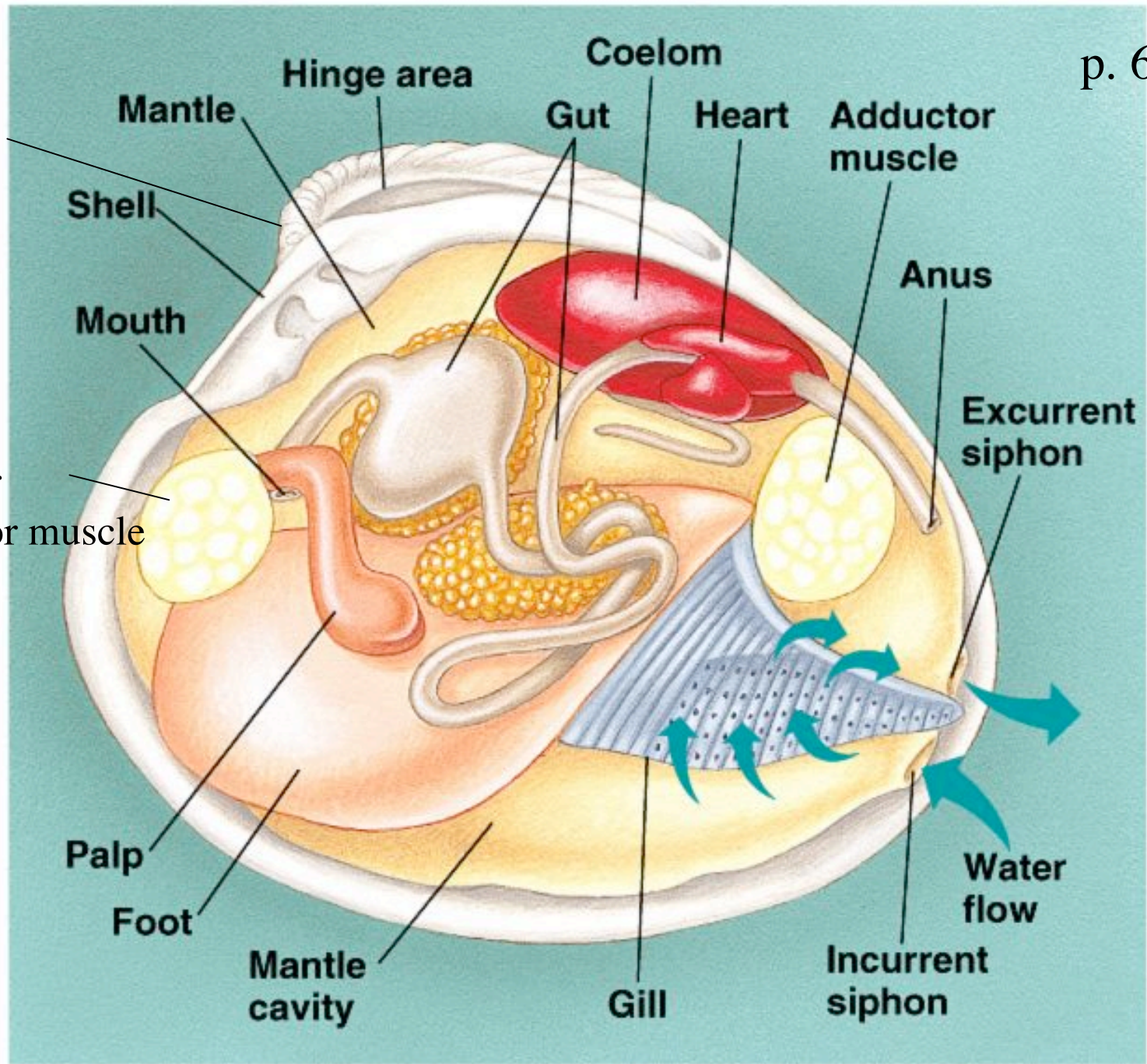
V





umbo

anterior adductor muscle

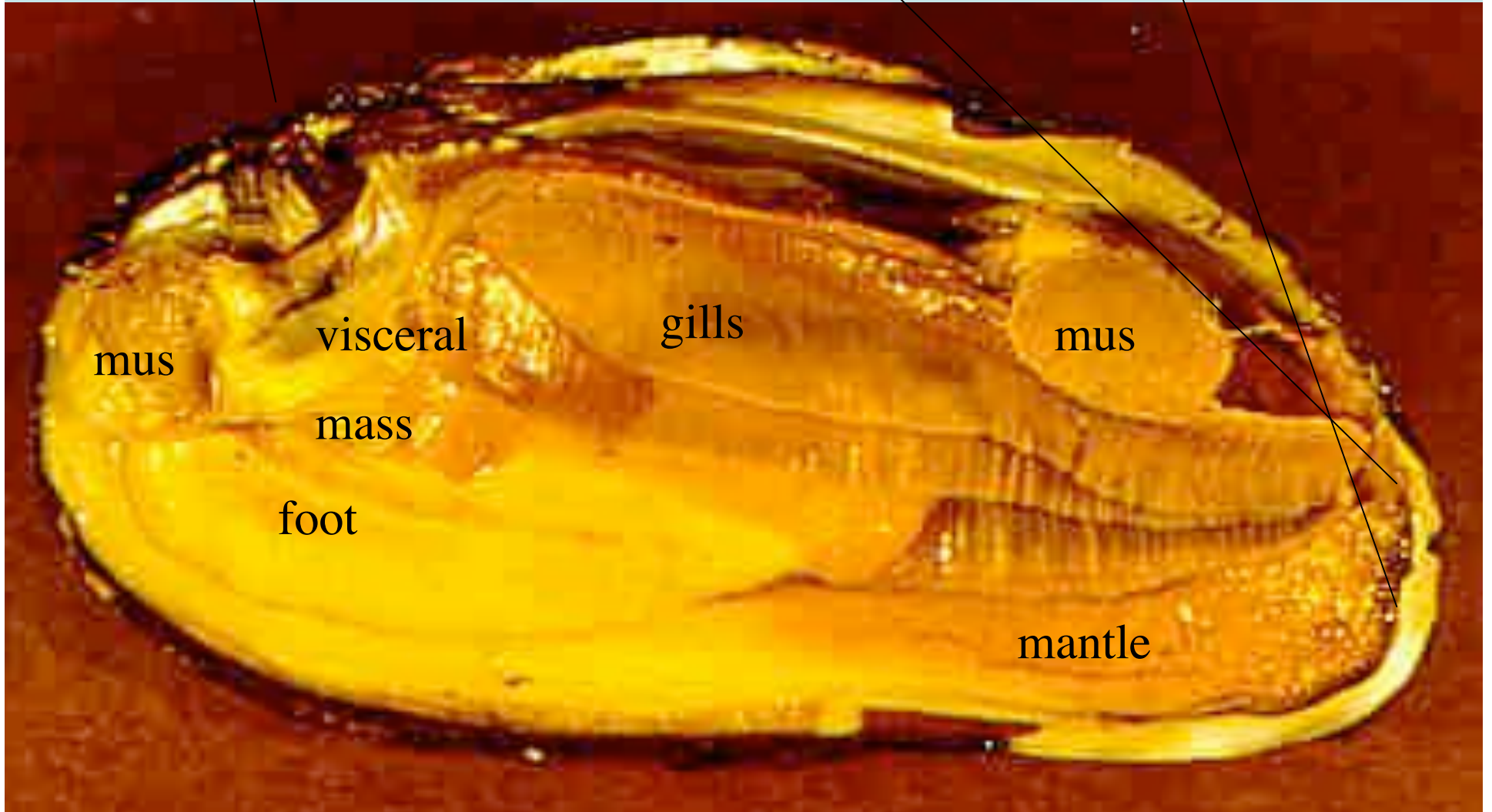


14

umbo

excurrent  
siphon

incurrent siphon



mus

visceral

gills

mus

mass

foot

mantle

15

excurrent  
siphon

incurrent  
siphon

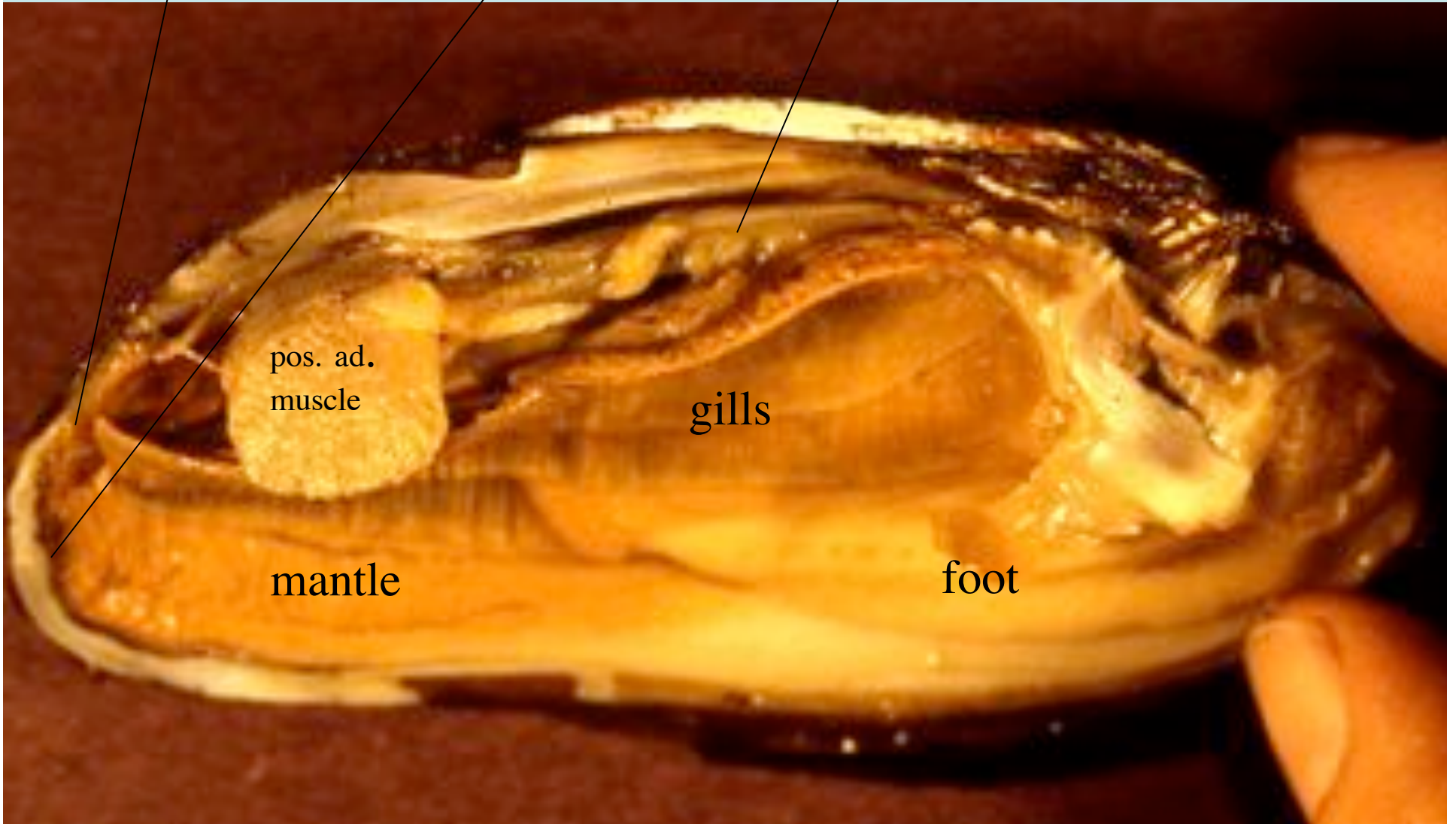
pericardial cavity/heart

pos. ad.  
muscle

gills

mantle

foot



16

digestive gland



gills

gonads

mantle

foot



17



18



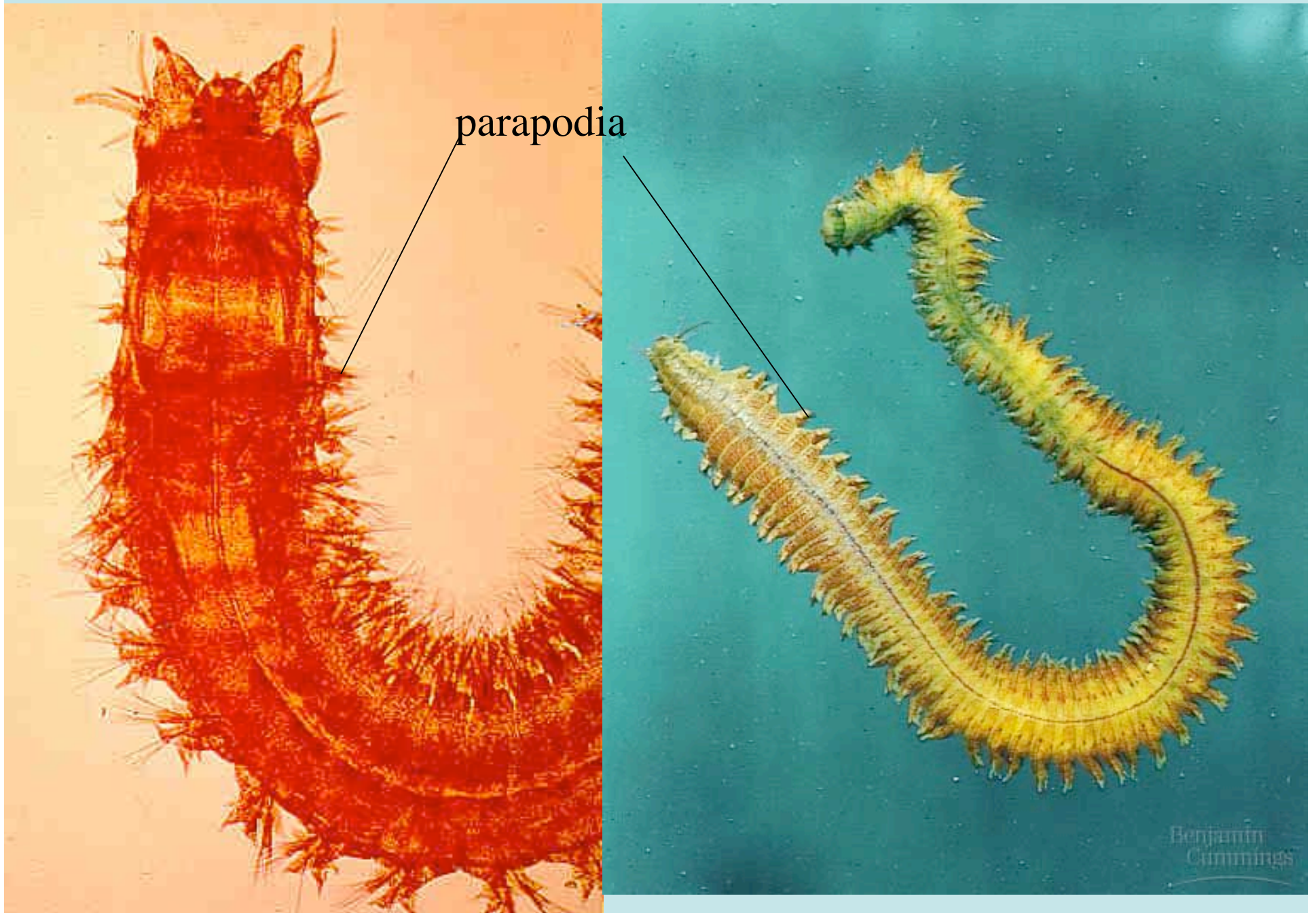
19



## 20 Phylum Annelida



Benjamin Cummings







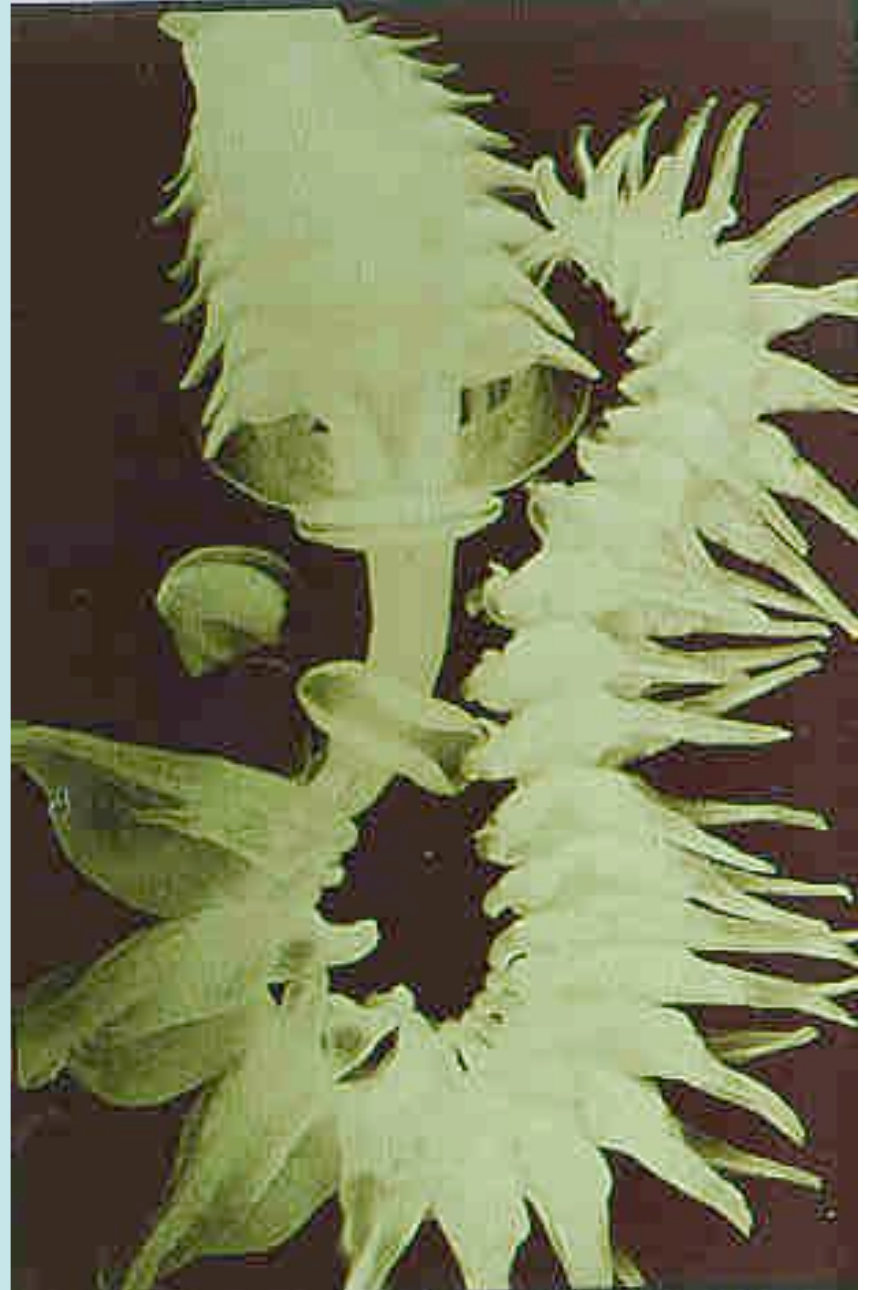
24







25





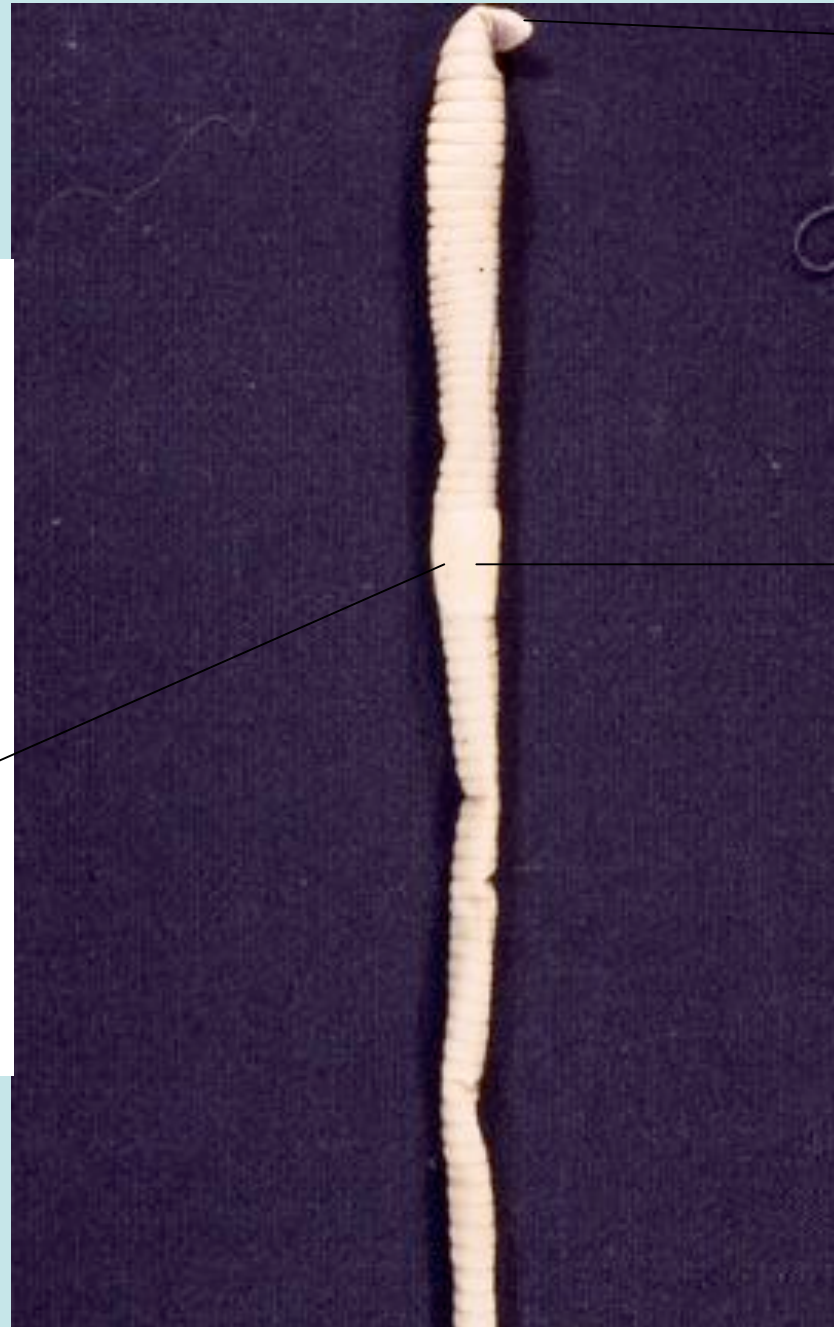
27



28



prostomium

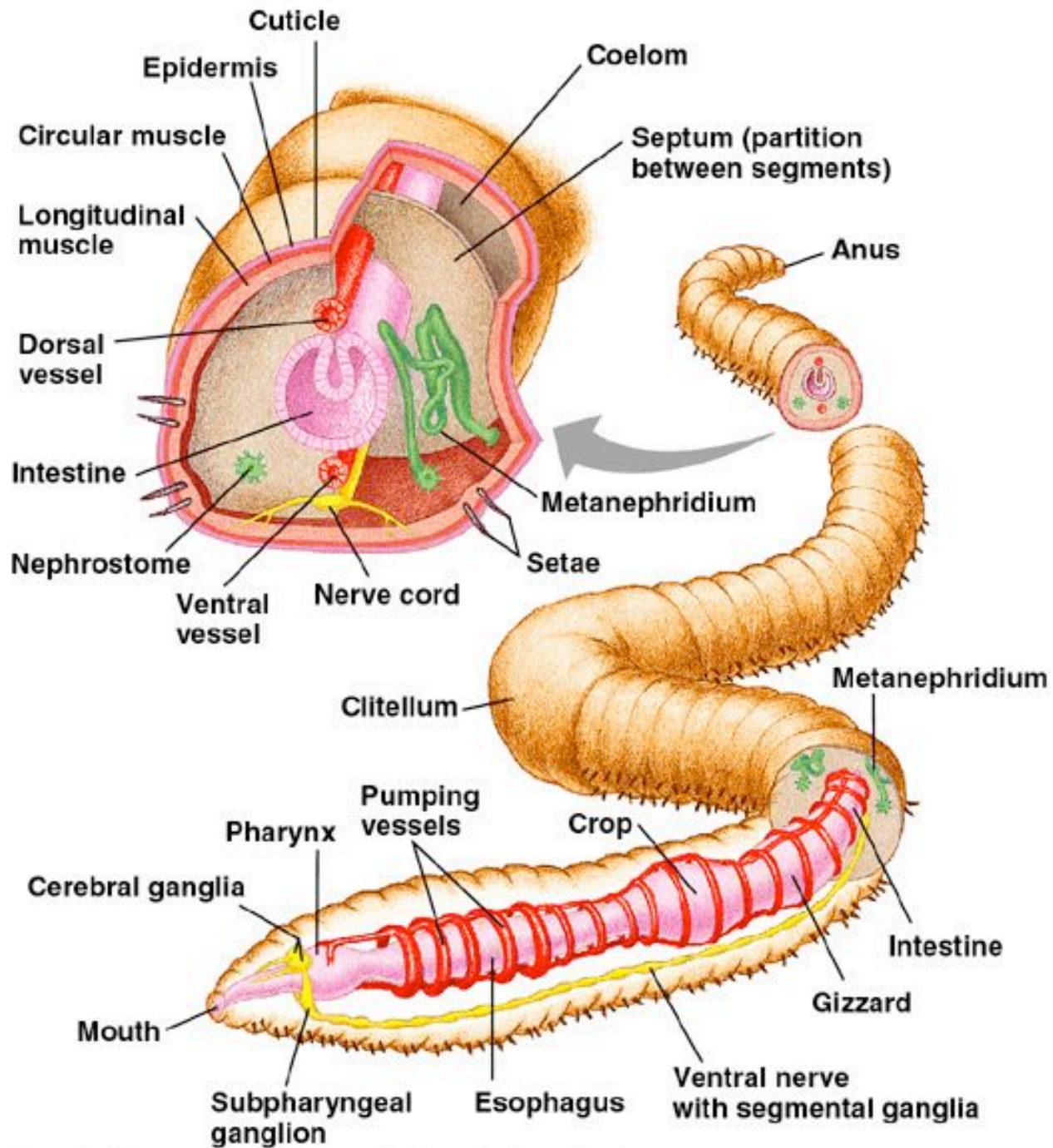


prostomium

clitellum

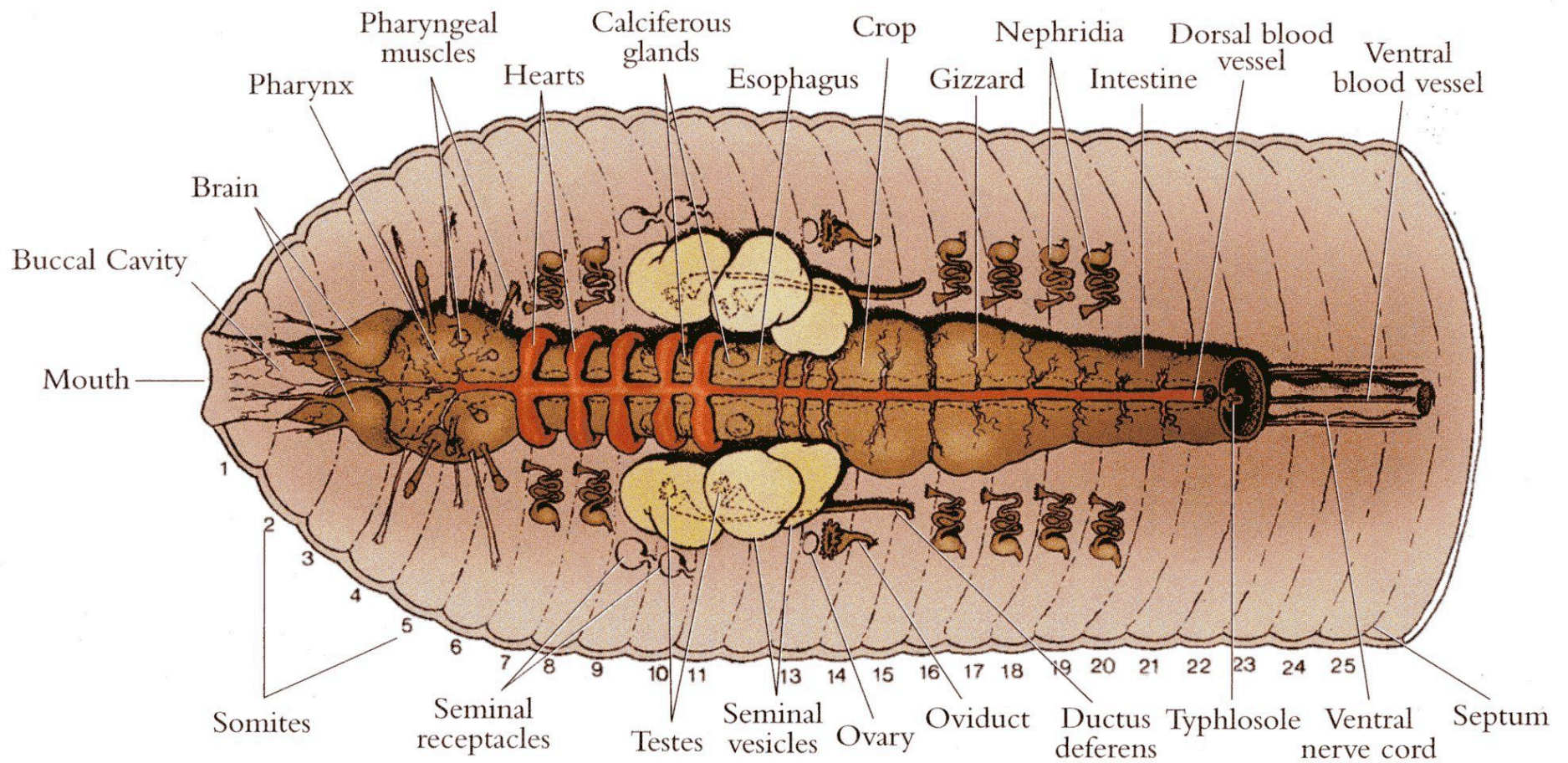
29

p. 654



30

Photo atlas, p. 157



**Figure 7.86** Diagram of the anterior end of the earthworm, *Lumbricus*.

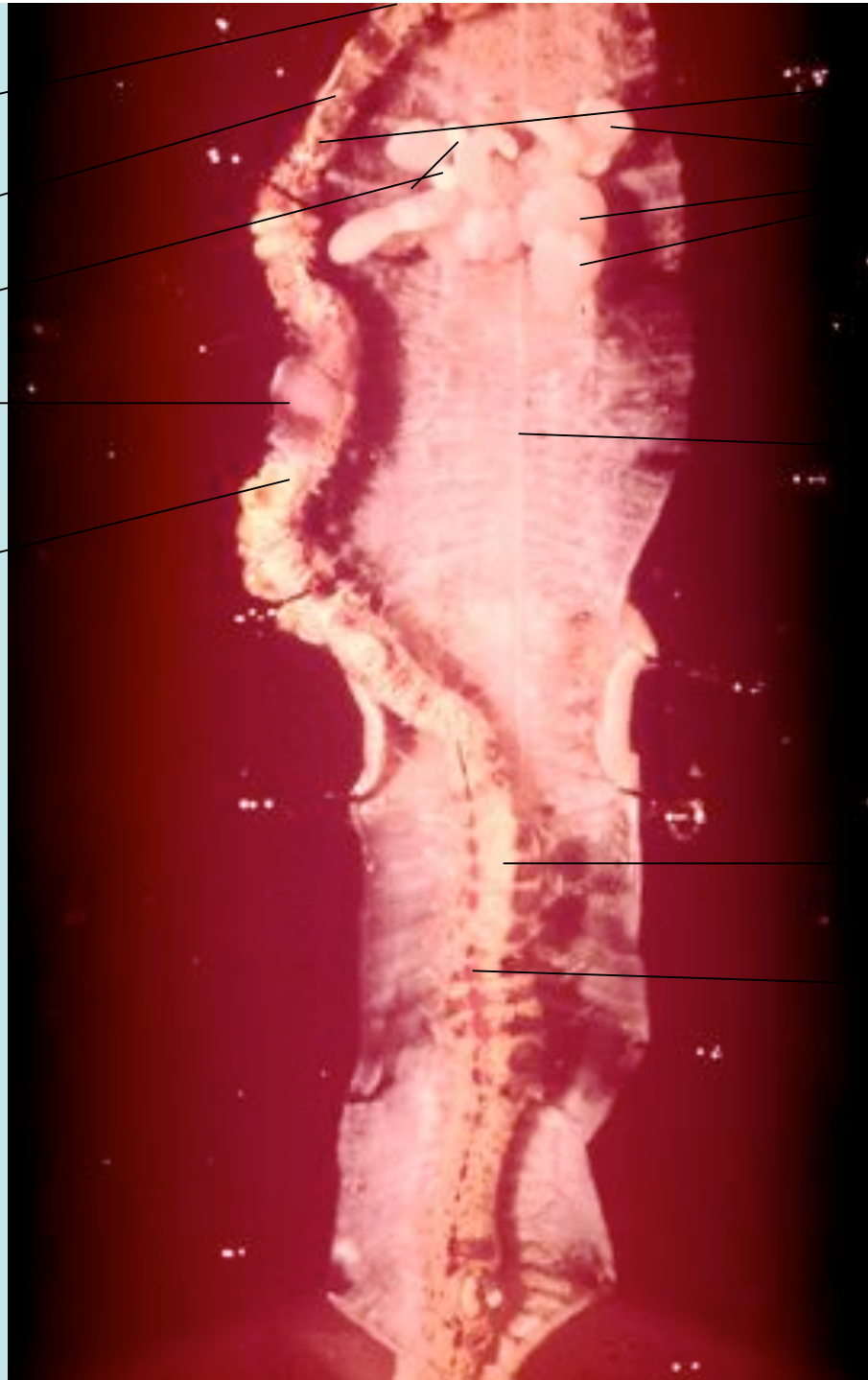
31  
pharynx

hearts

sem. recep.

crop

gizzard



esophagus

seminal  
vesicles

ventral  
nerve cord

intestine

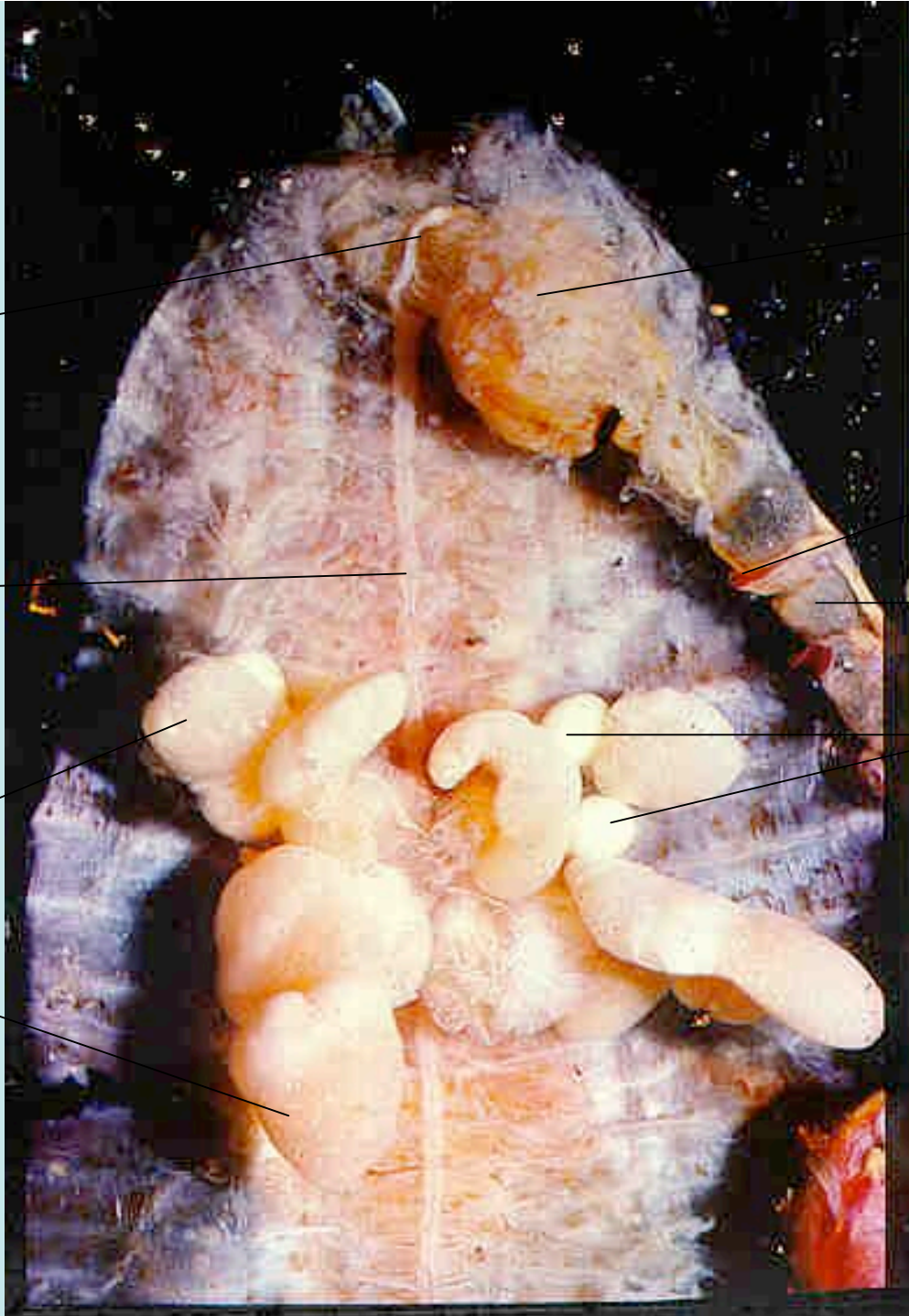
dorsal  
blood vessel

32

cerebral  
ganglia  
or "brain"

ventral  
nerve cord

seminal  
vesicles



pharynx

hearts

esophagus

seminal  
receptacles



33

longitudinal muscles

dorsal blood vessel

typhlosole

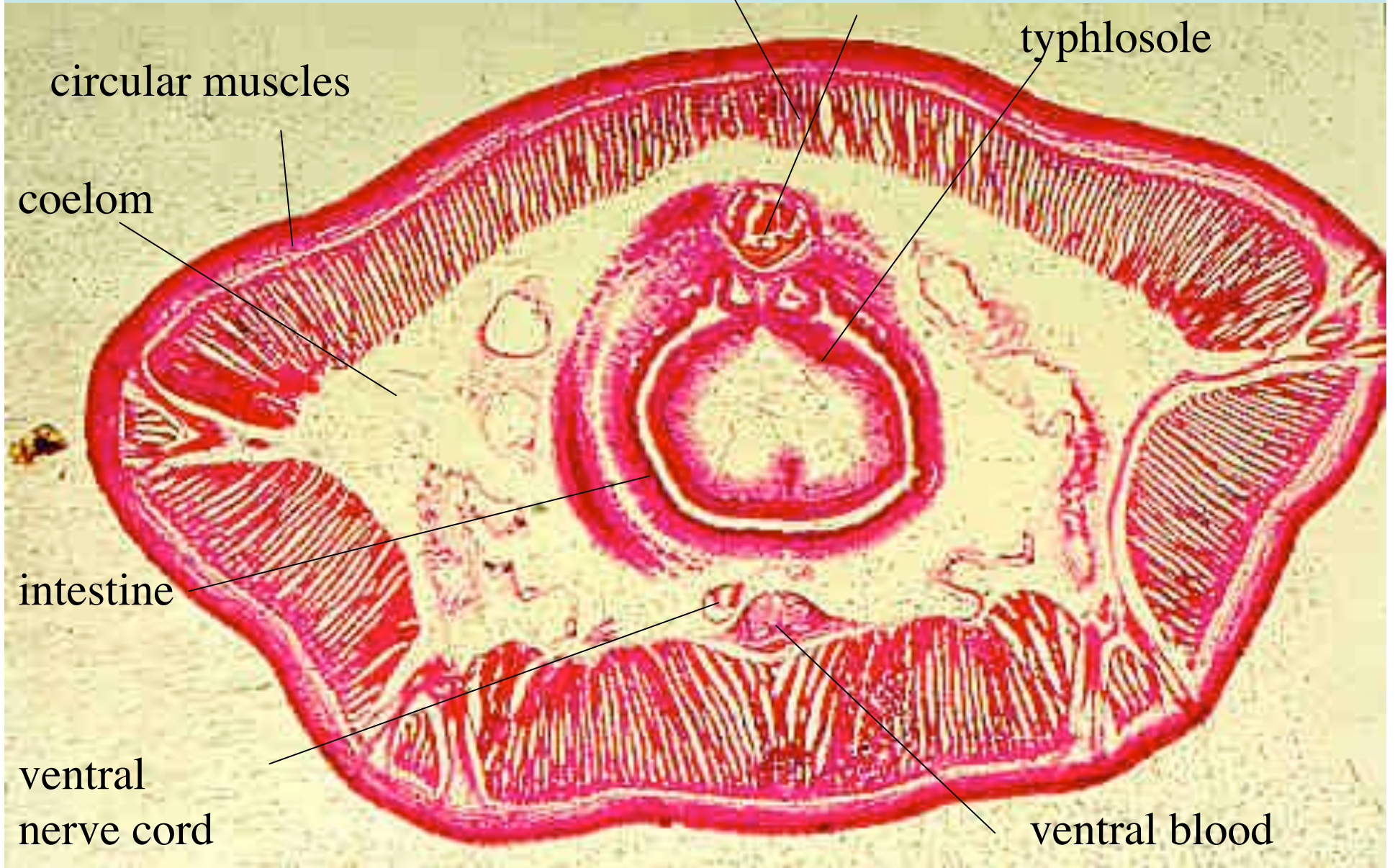
circular muscles

coelom

intestine

ventral  
nerve cord

ventral blood  
vessel

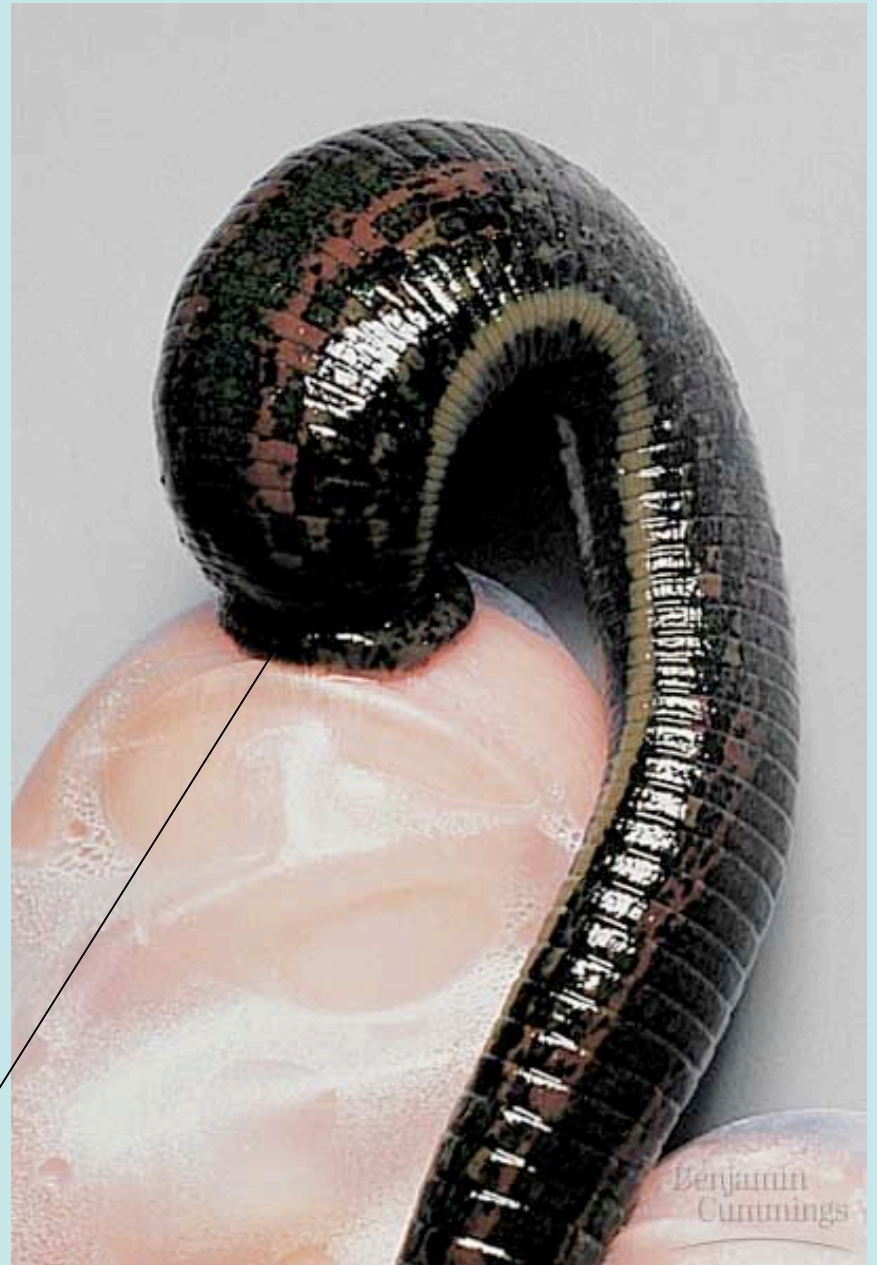


34



anterior sucker

posterior sucker



Benjamin Cummings