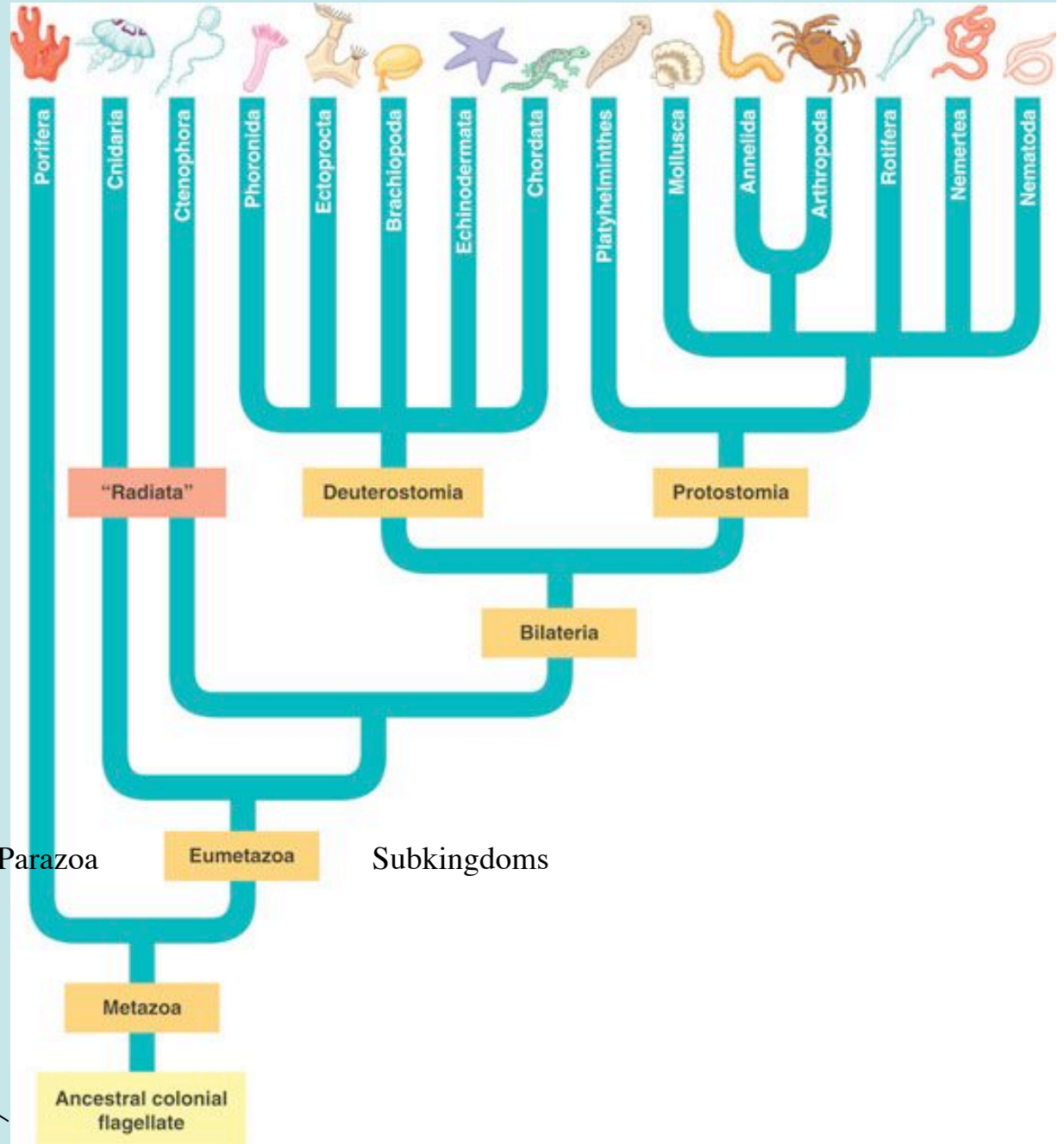
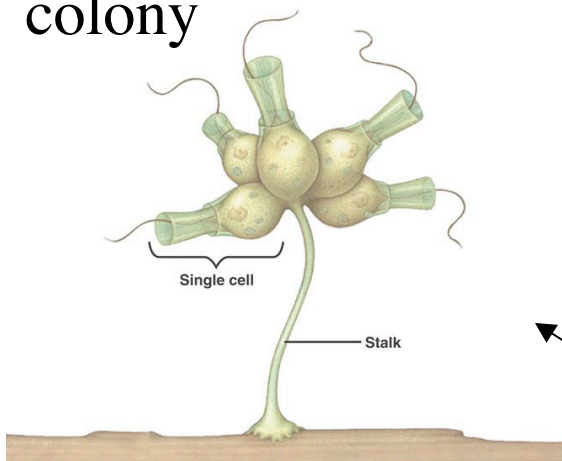


Phylogeny of Kingdom Animalia- traditional hypothesis- p. 634

1



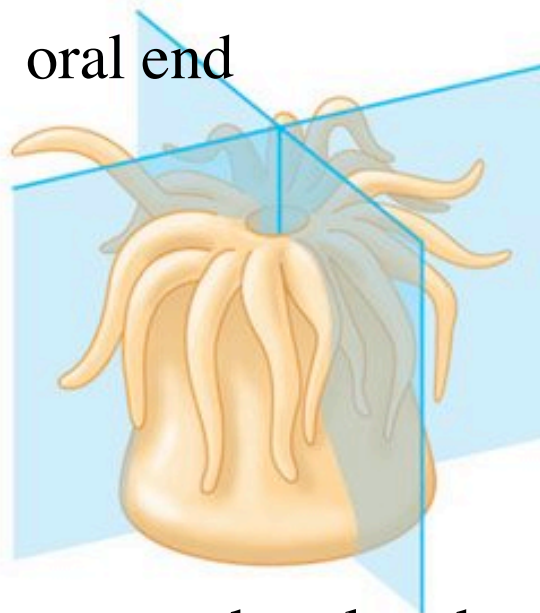
choanoflagellate colony



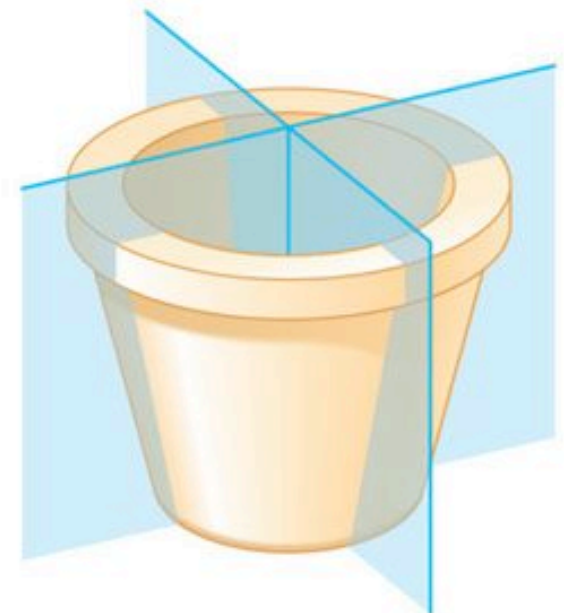
Body symmetry- p. 630

2

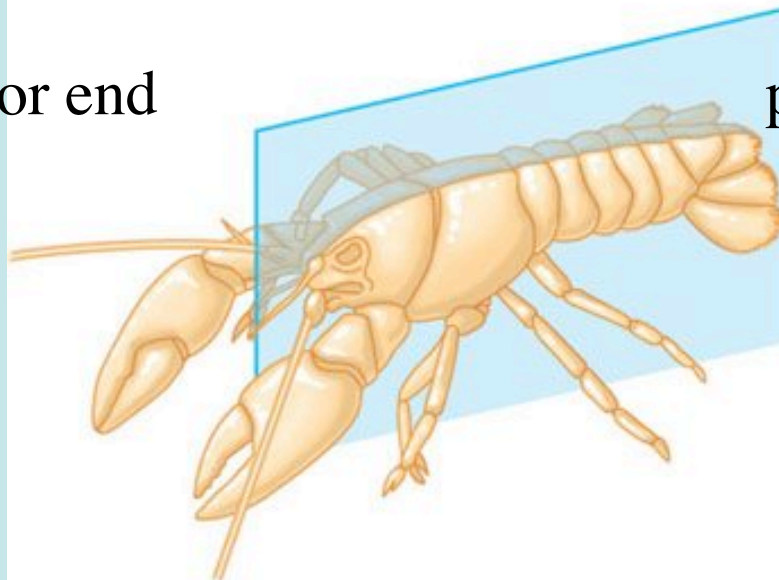
asymmetry-
sponges



(a) Radial symmetry

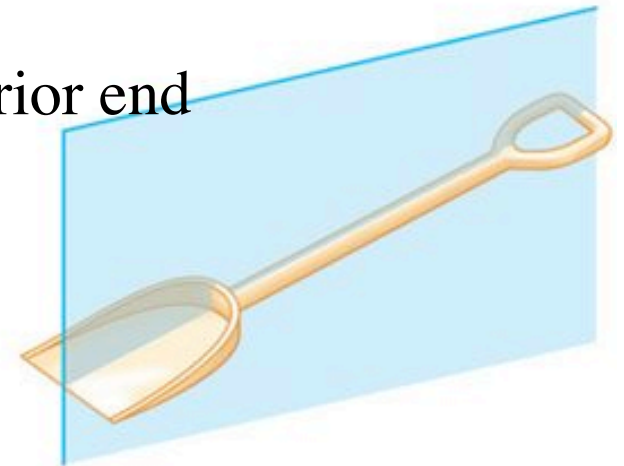


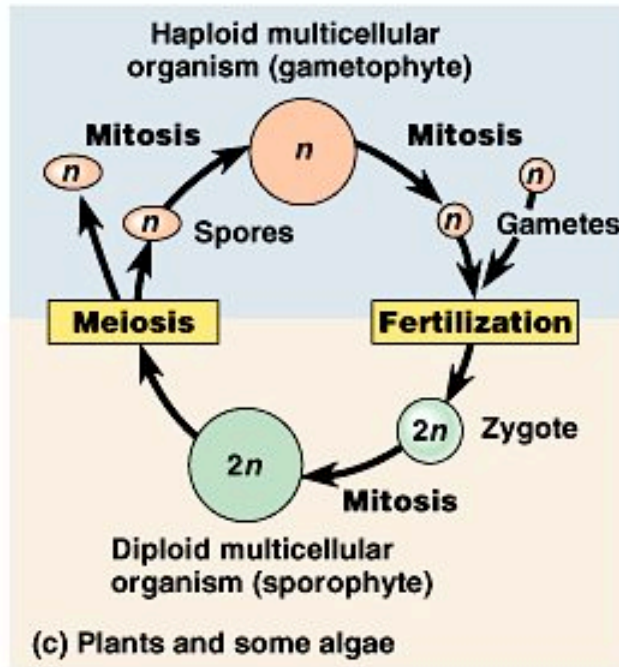
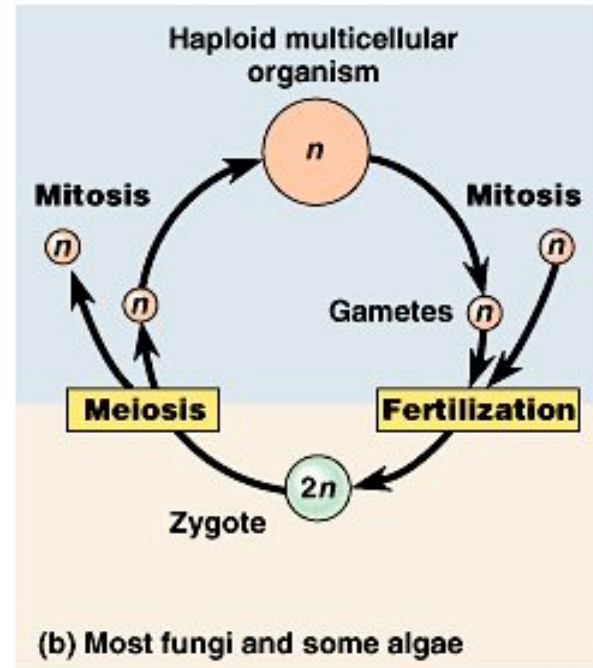
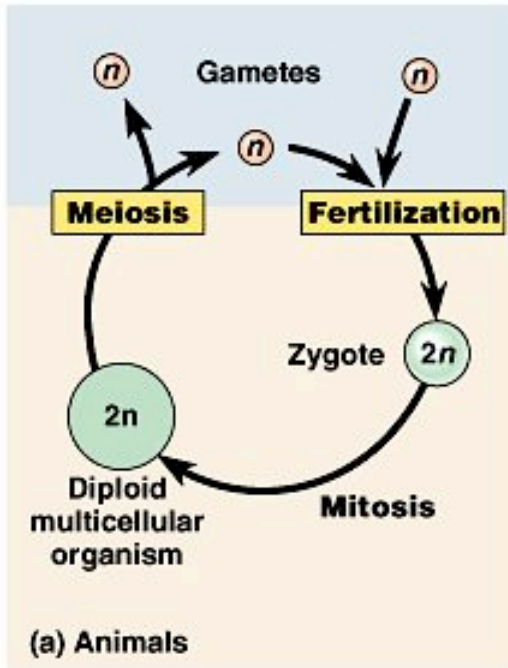
anterior end



(b) Bilateral symmetry

posterior end





□ Haploid
 □ Diploid

Porifera — sponges

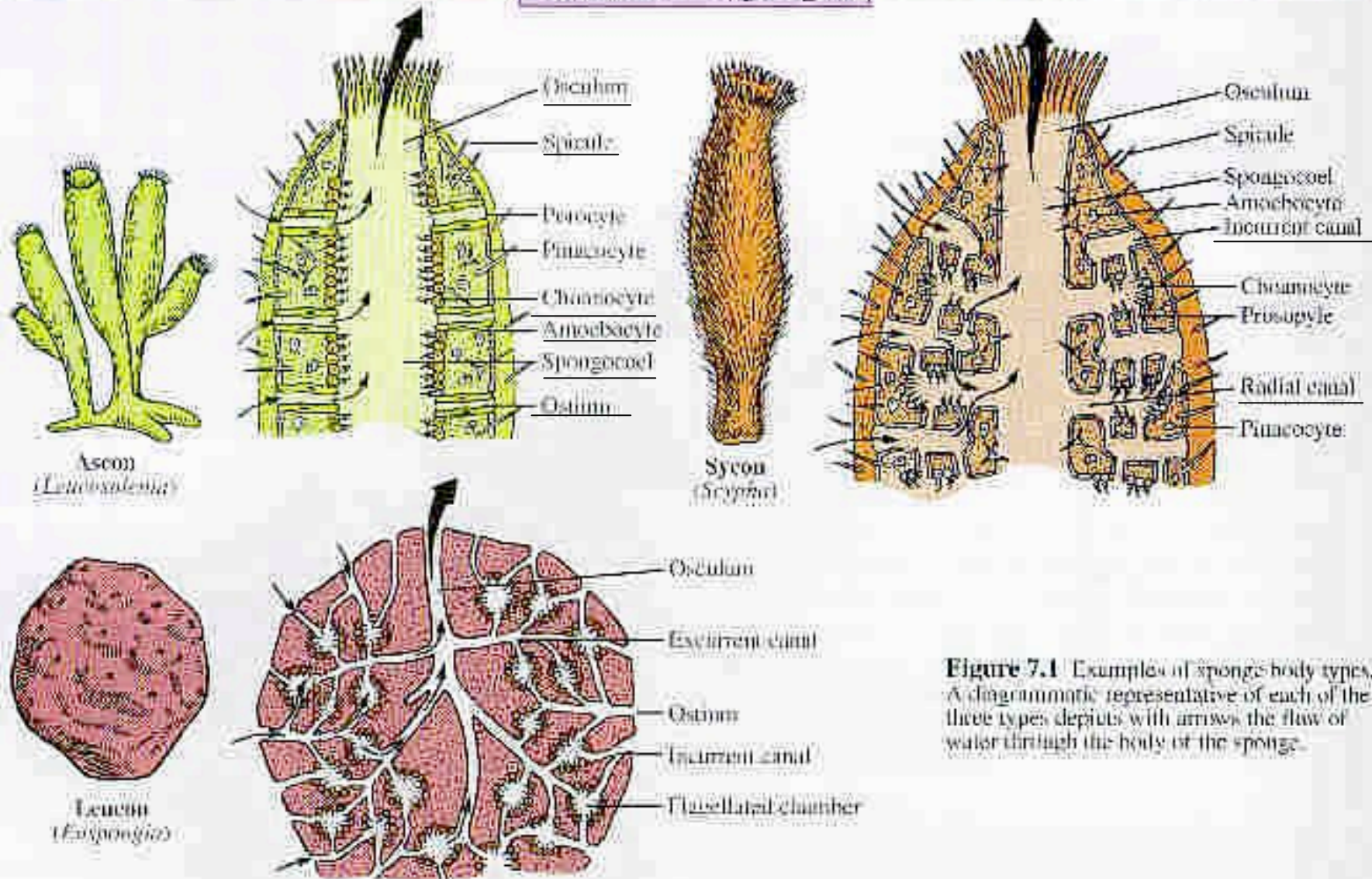
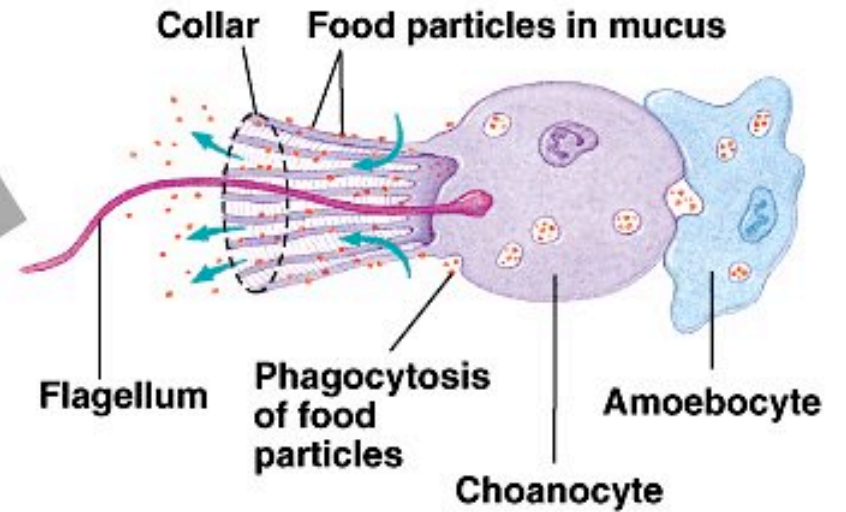
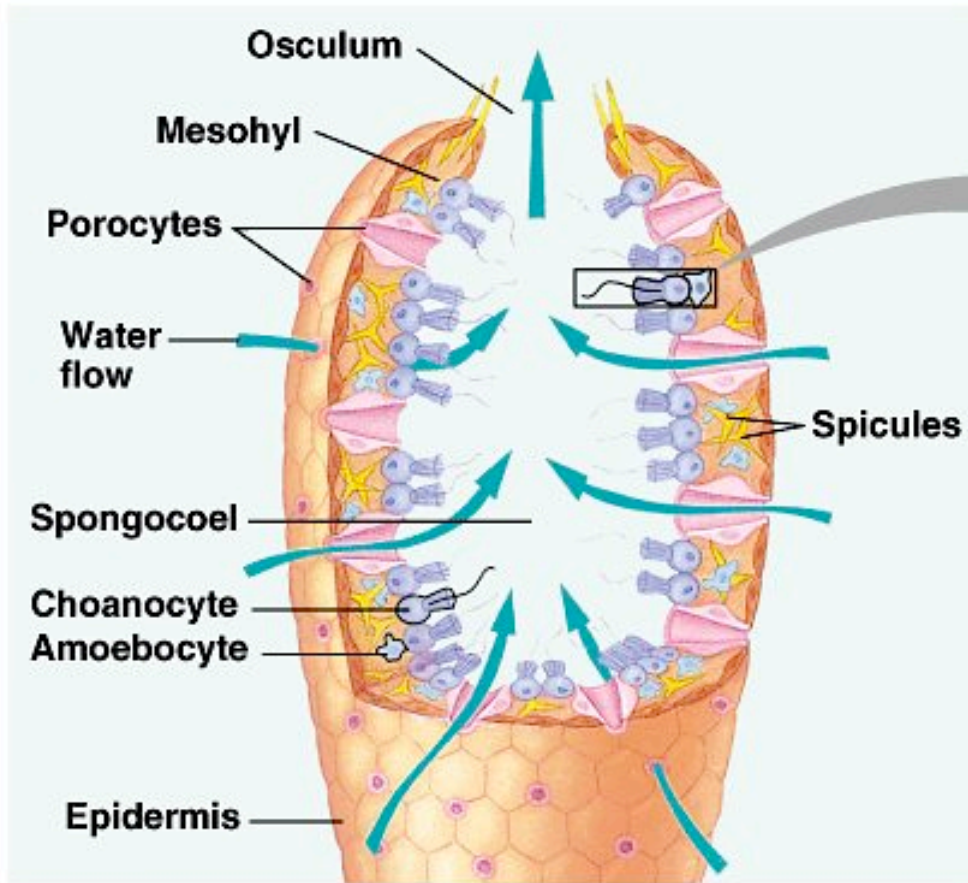


Figure 7.1 Examples of sponge body types. A diagrammatic representative of each of the three types depicts with arrows the flow of water through the body of the sponge.

5

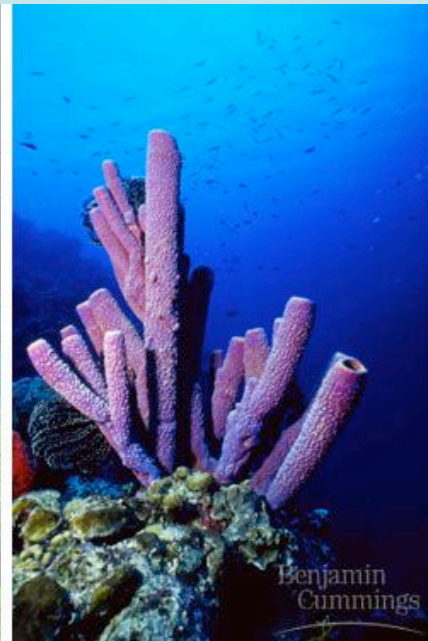
Anatomy of an ascon sponge- p. 642



Copyright © Pearson Education, Inc., publishing as Benjamin Cummings.

ascon type

6



7



sycon

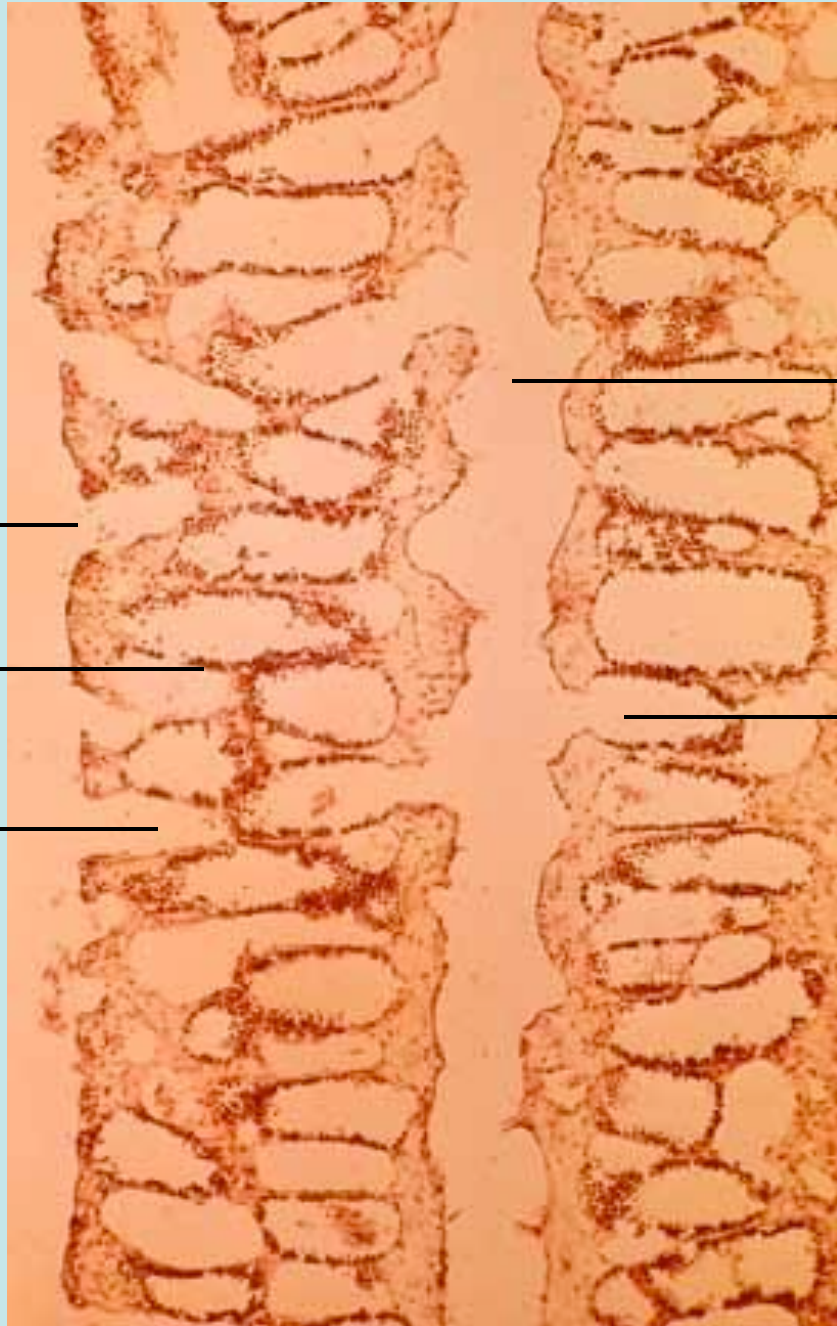
ostium

spongocoel

radial canal

incurrent canal

ostium



ostium_____

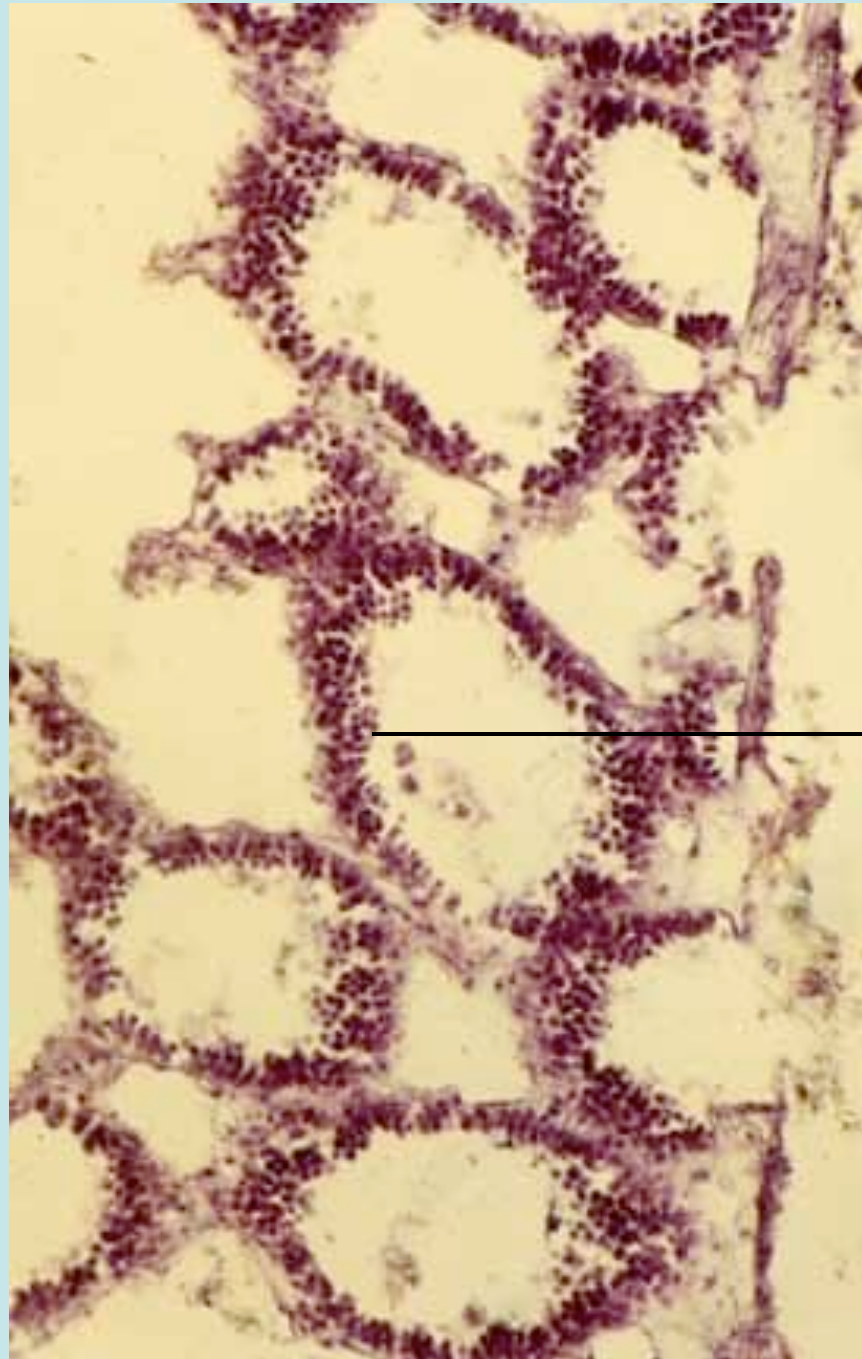
choanocytes_____

incurrent canal_____

_____spongocoel

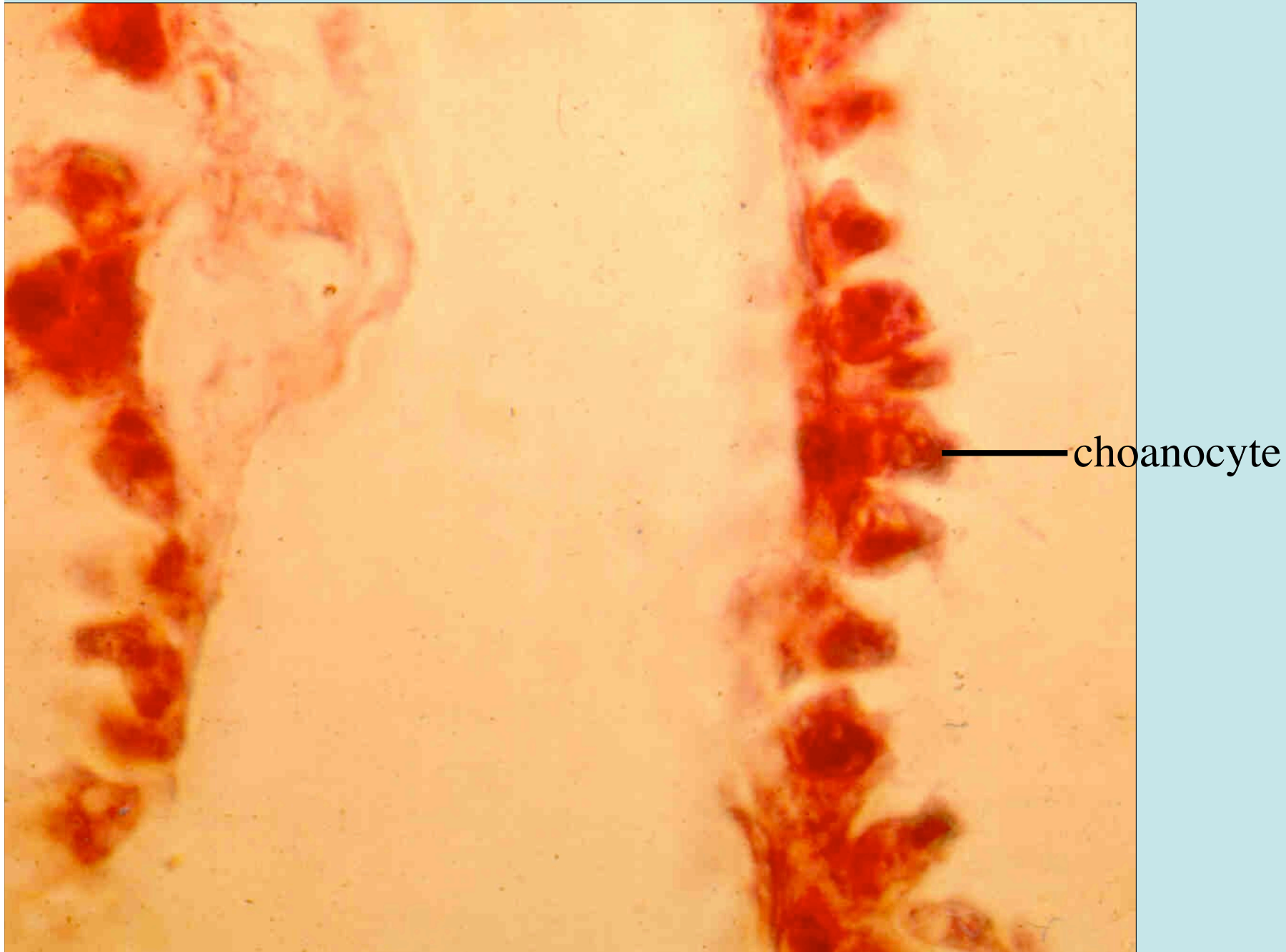
_____radial canal

9



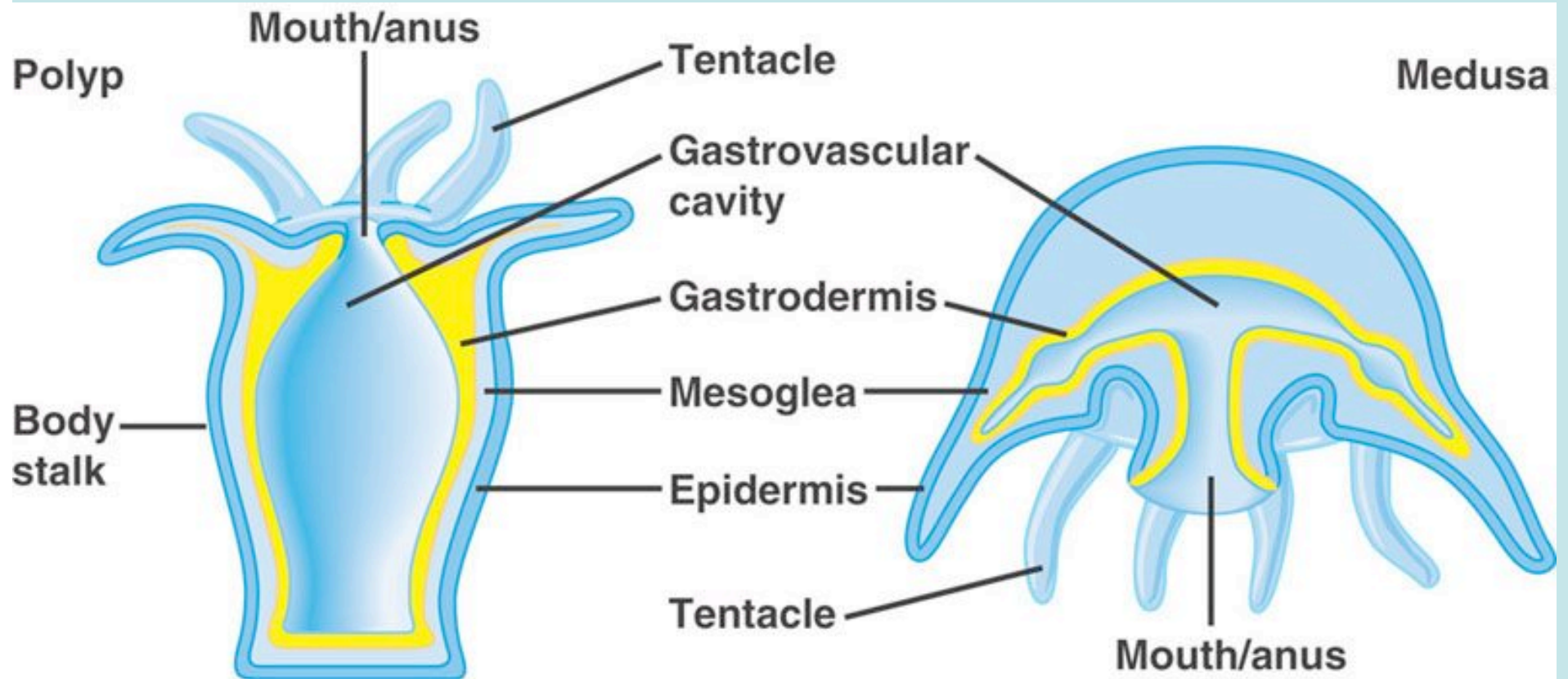
choanocytes

10





12 Polyp and medusa forms of Phylum Cnidaria-p. 643

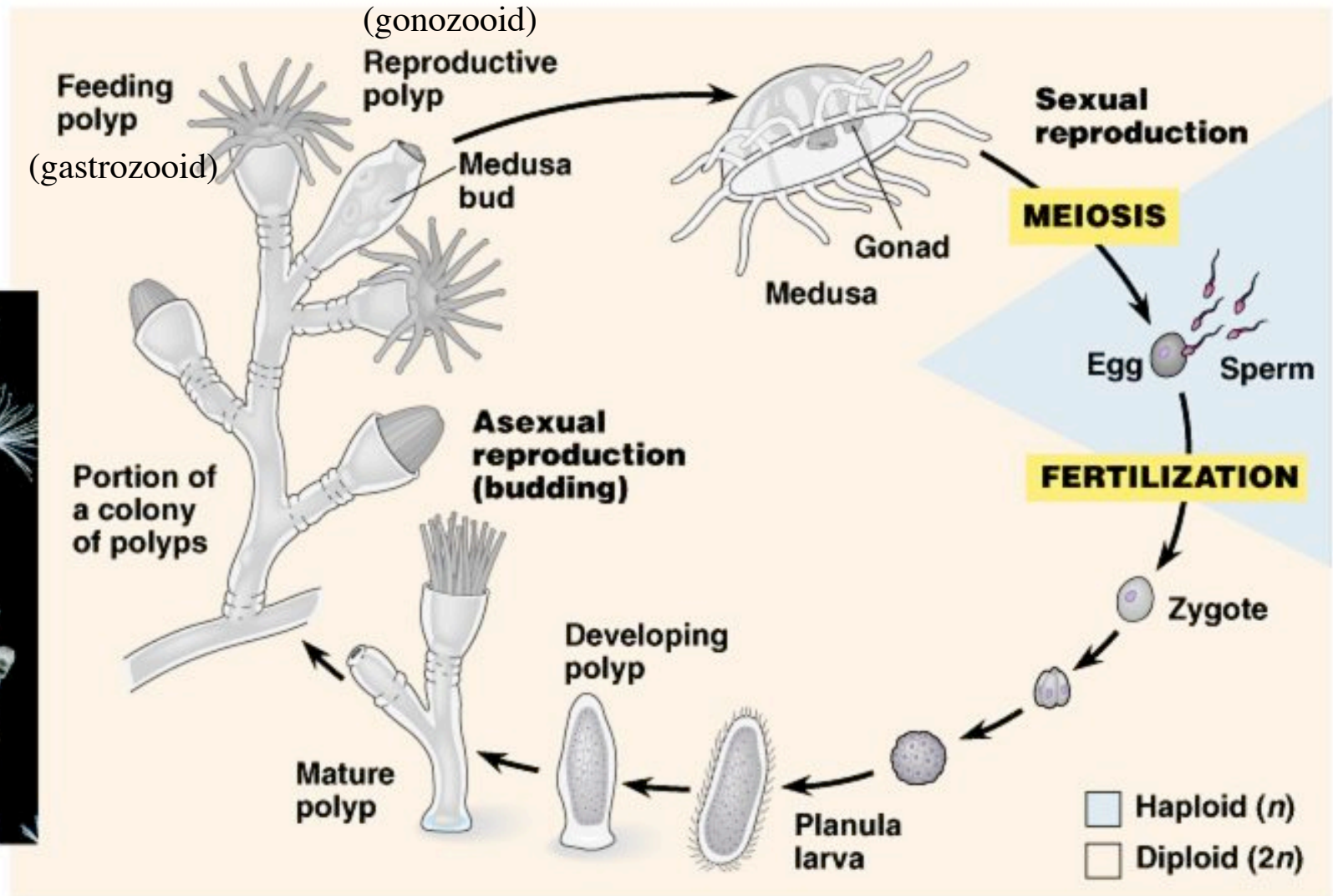


13 Life Cycle of a Typical Hydrozoan-p. 645

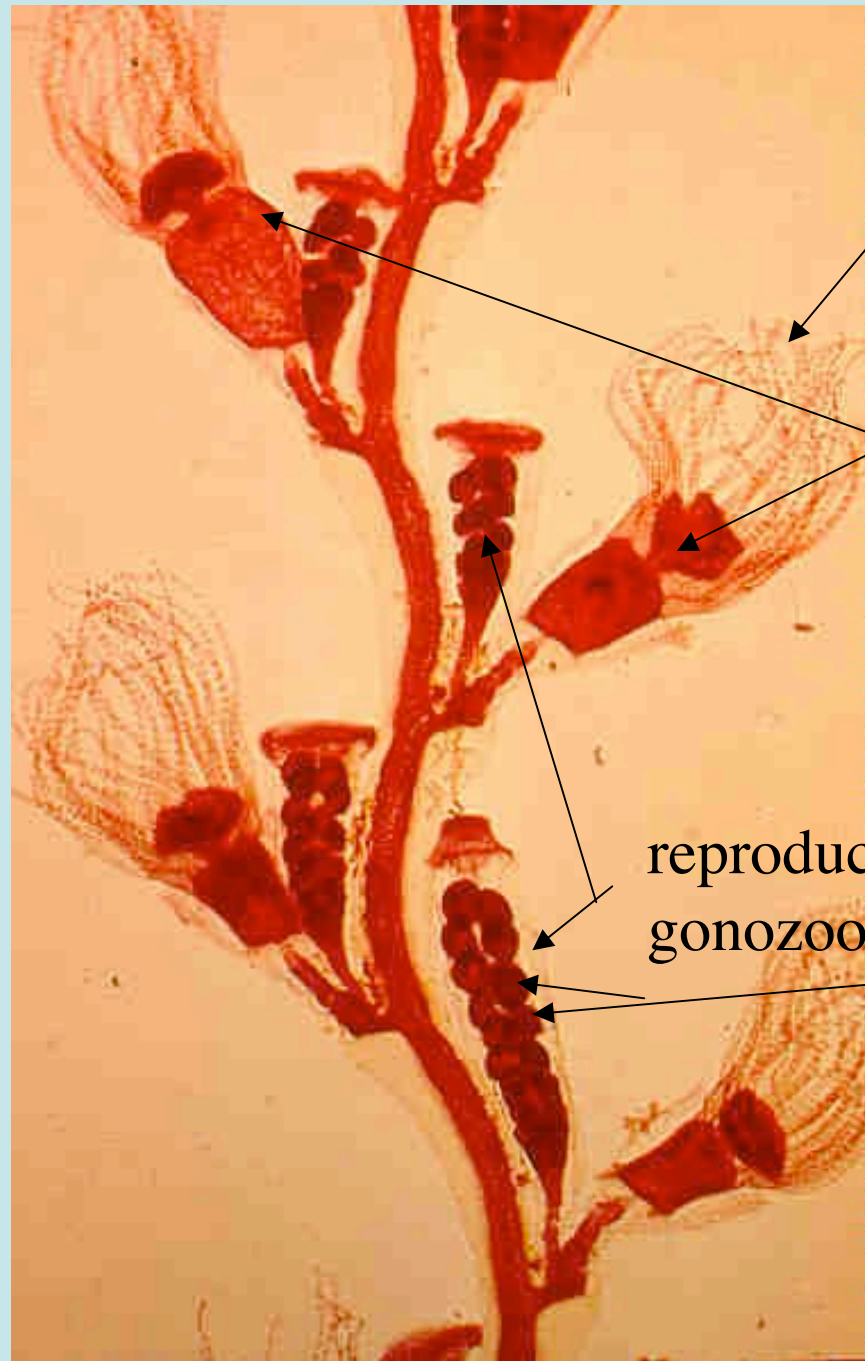


1 mm

Copyright © Pearson Education, Inc., publishing as Benjamin Cummings.



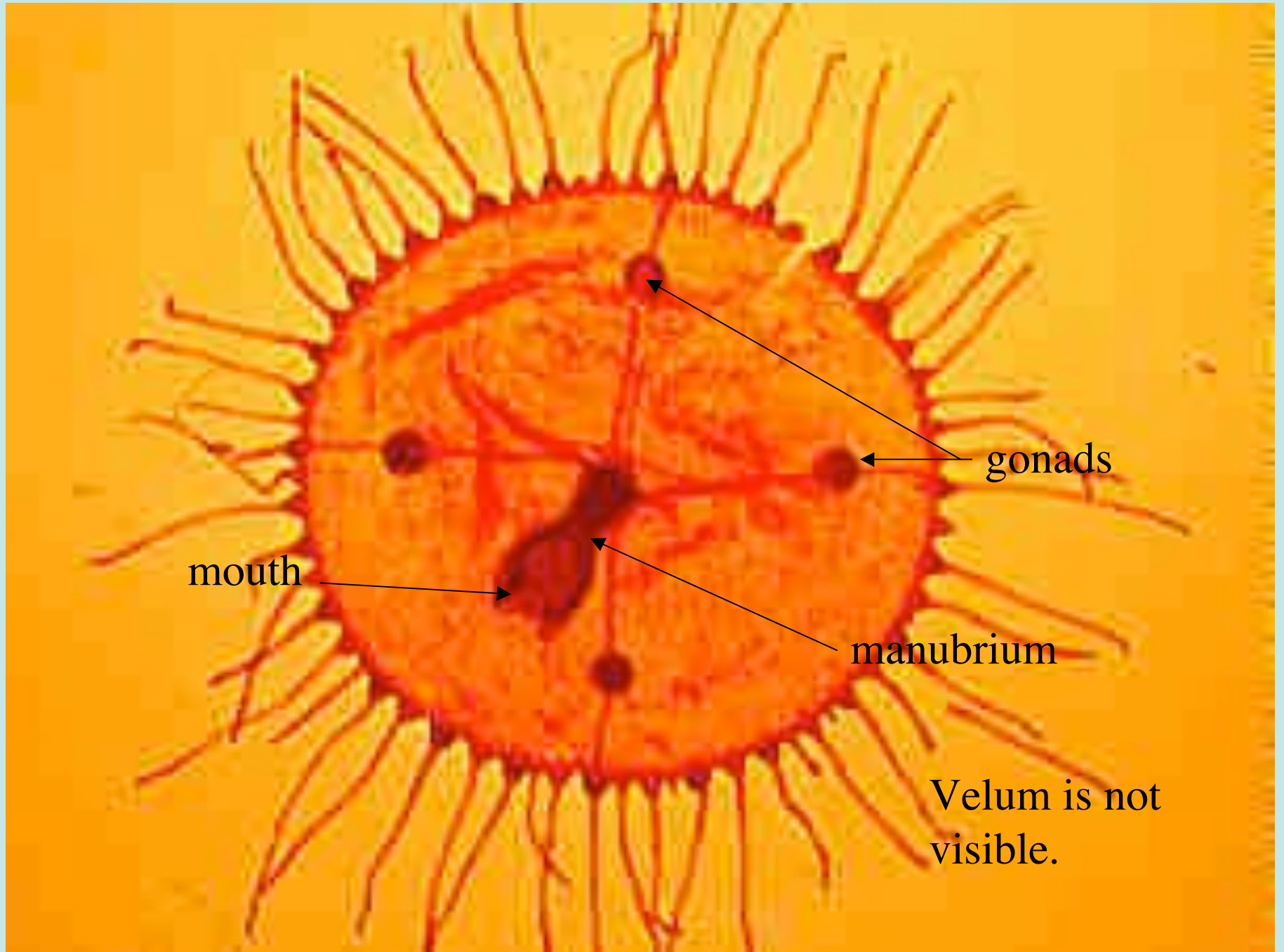
14



tentacles

feeding polyp or
gastrozooid

reproductive polyp or
gonozooid with medusa buds



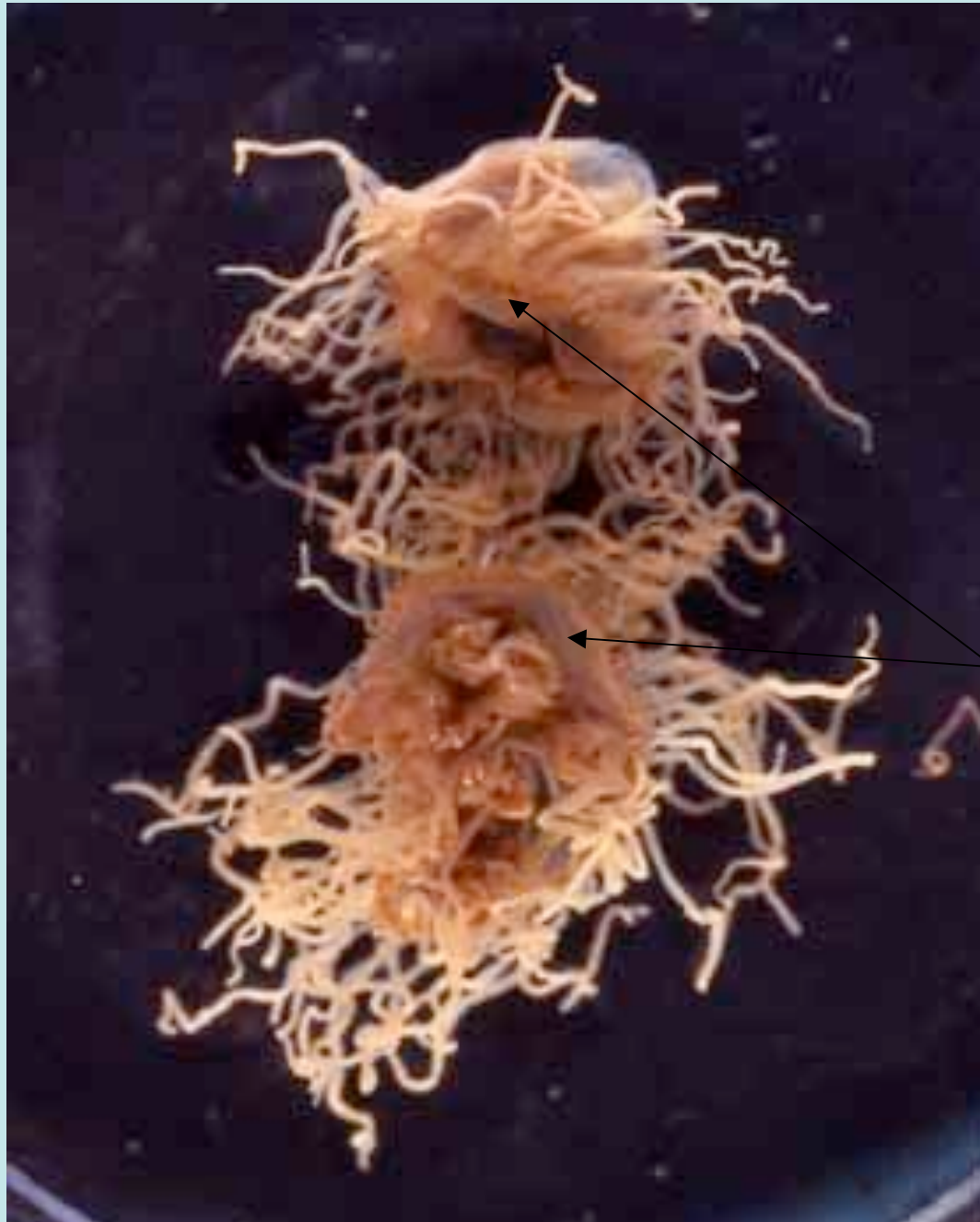
mouth

gonads

manubrium

Velum is not visible.

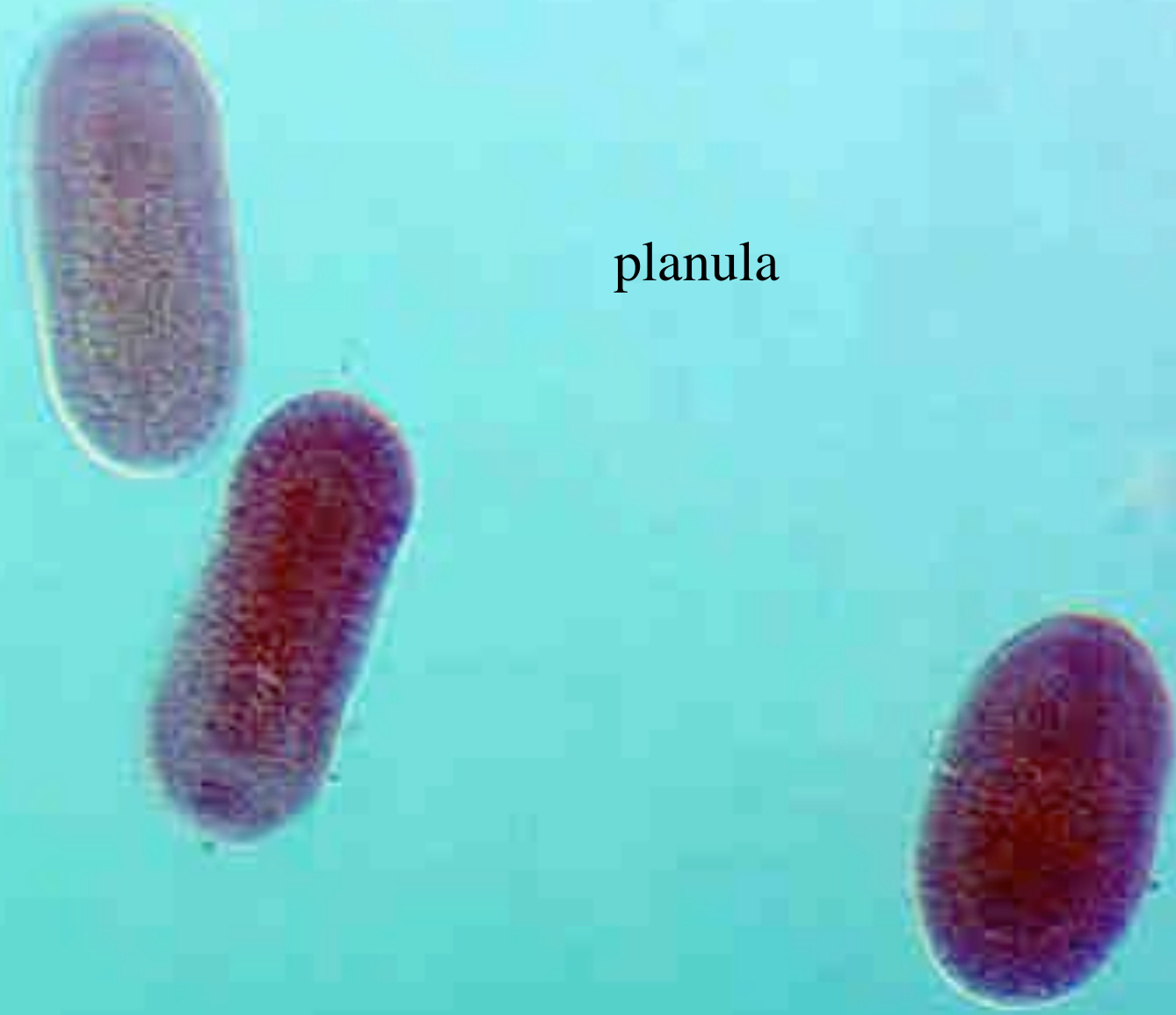
16



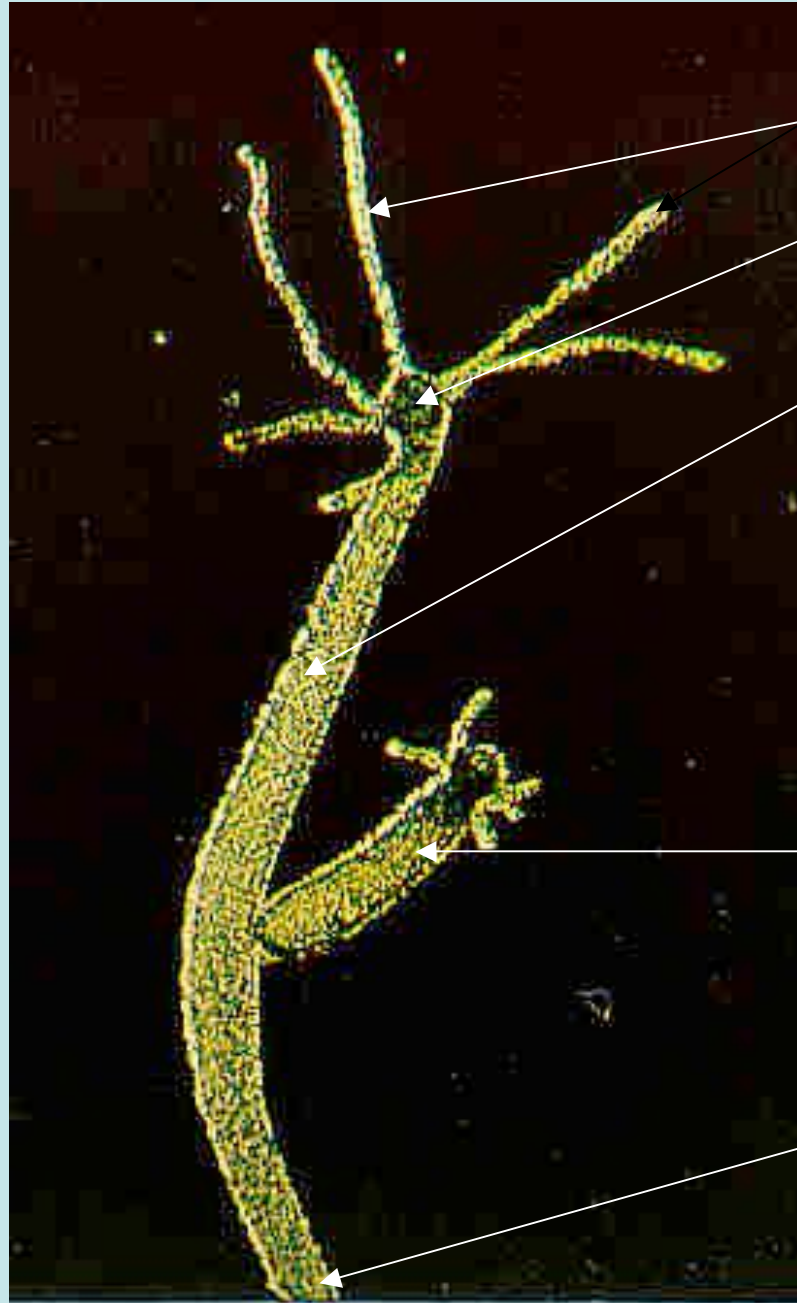
velum

17

planula



18



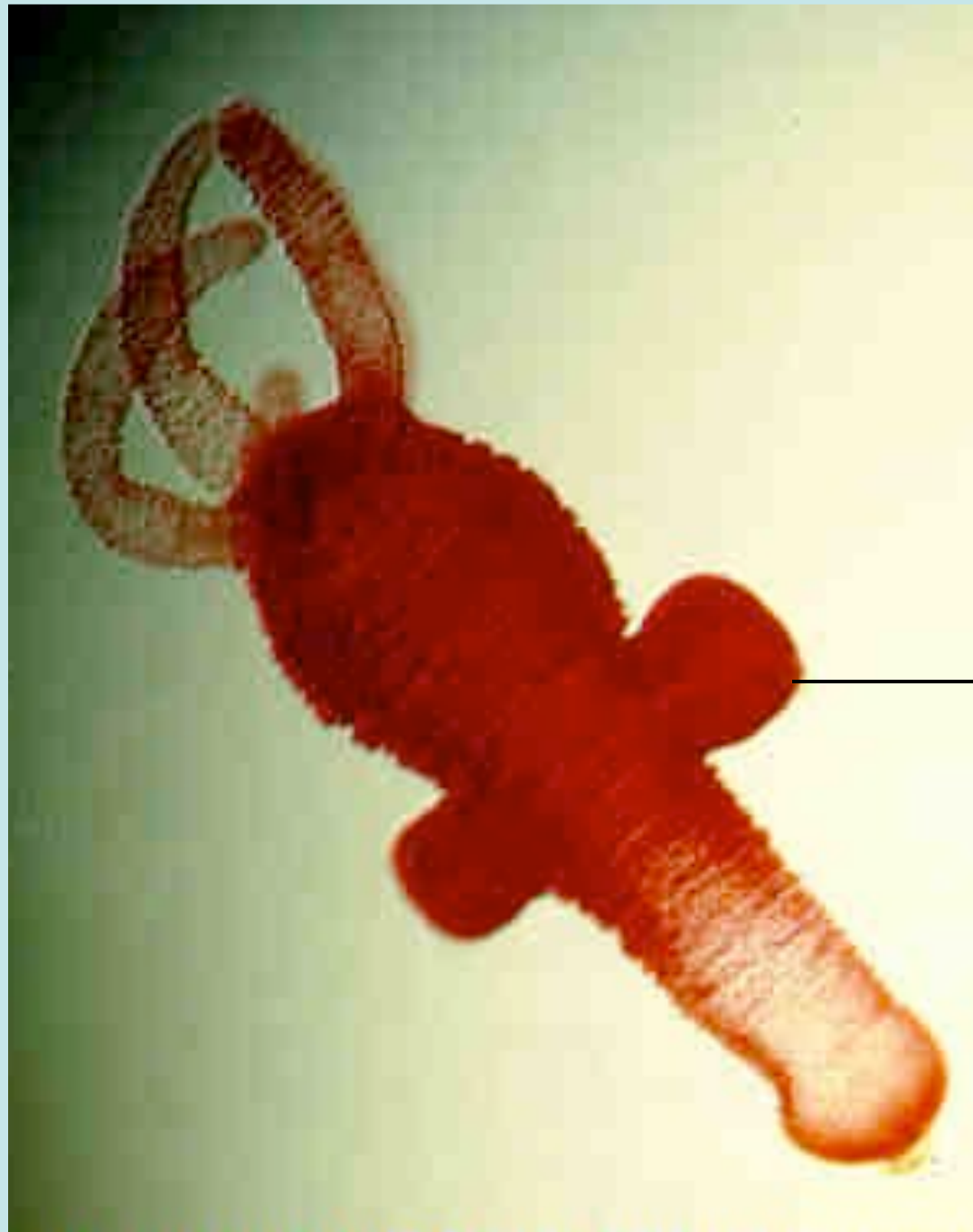
tentacles

mouth

gastrovascular
cavity

bud

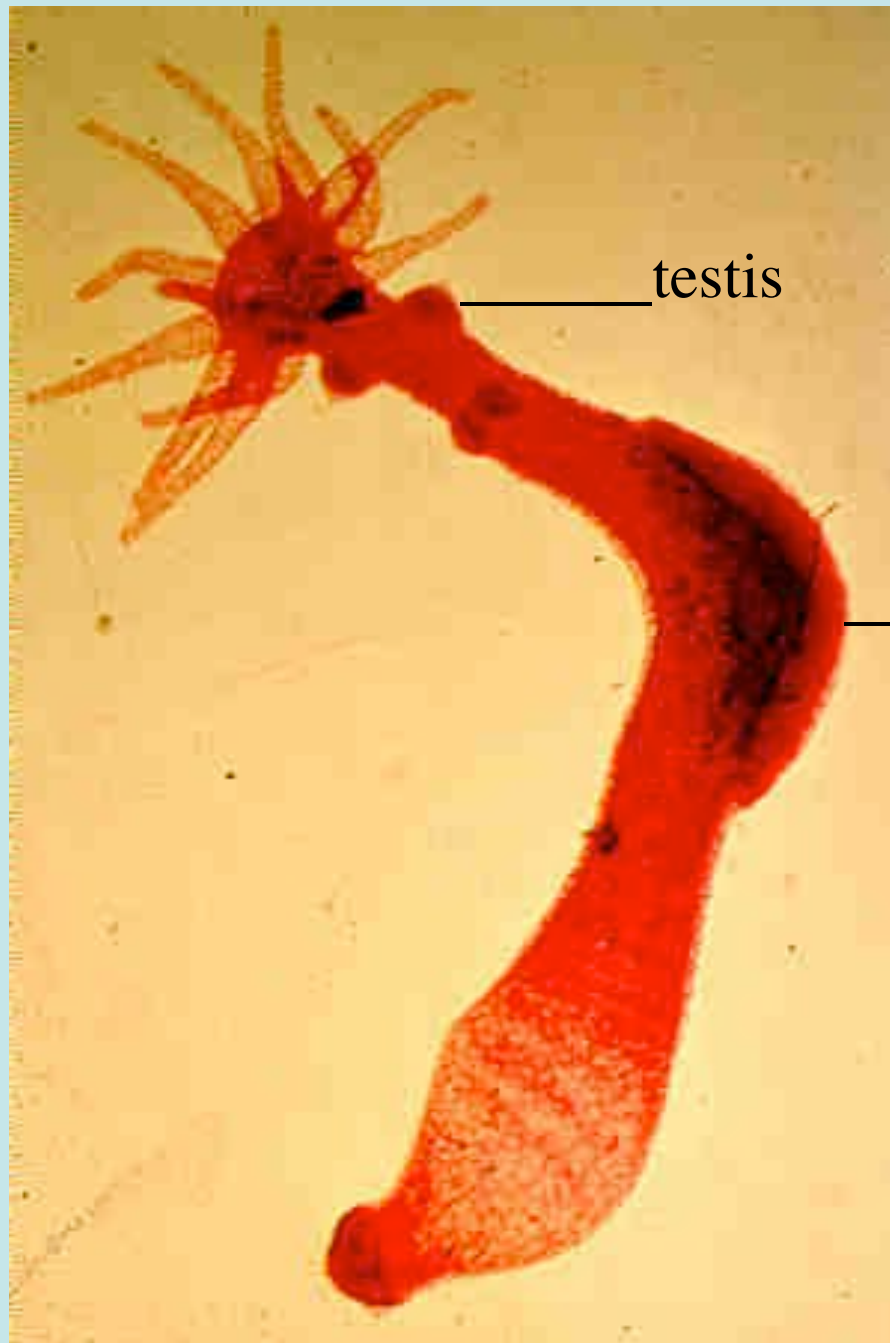
basal disc



asexual
reproduction

— bud

20



testis

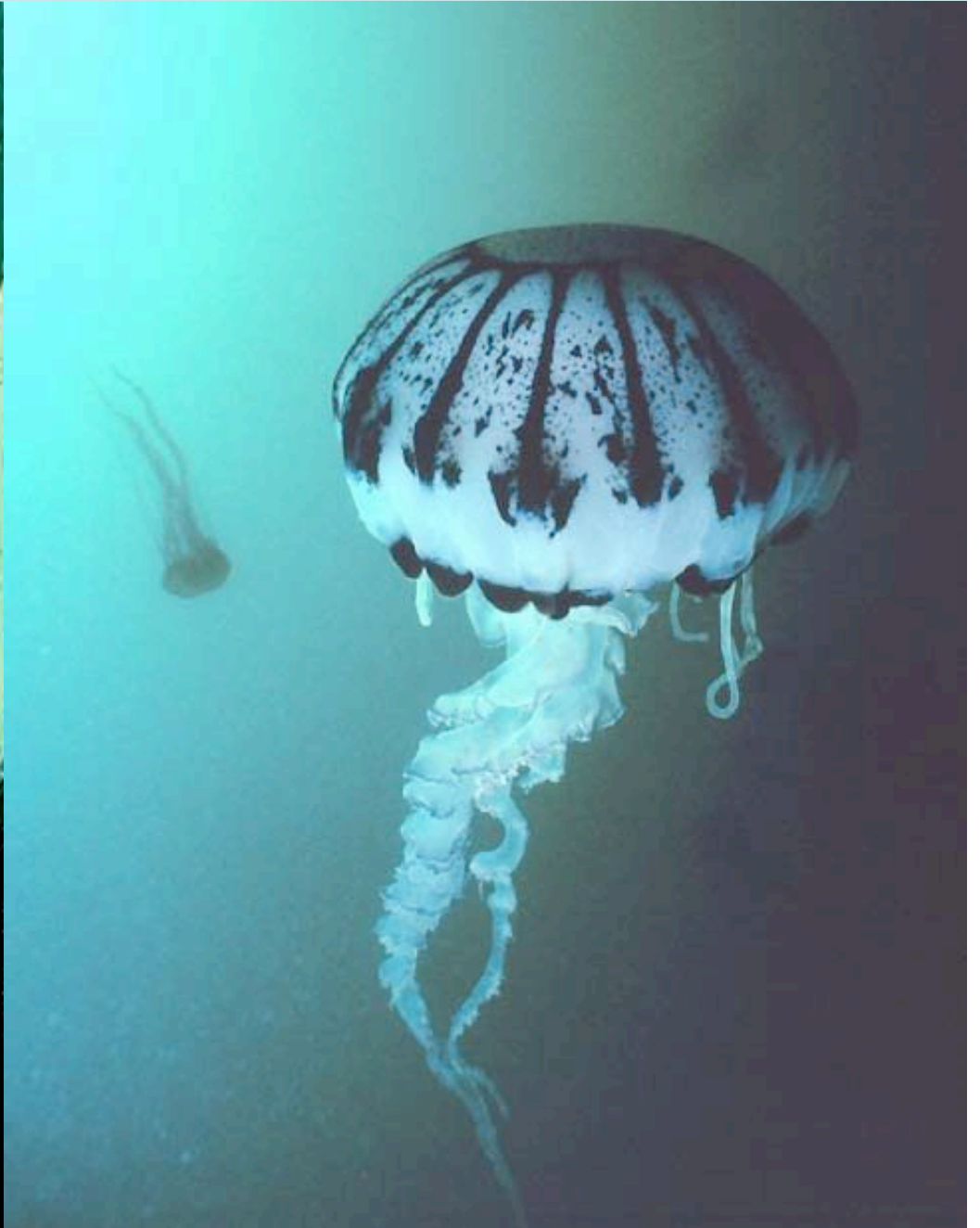
sexual reproduction

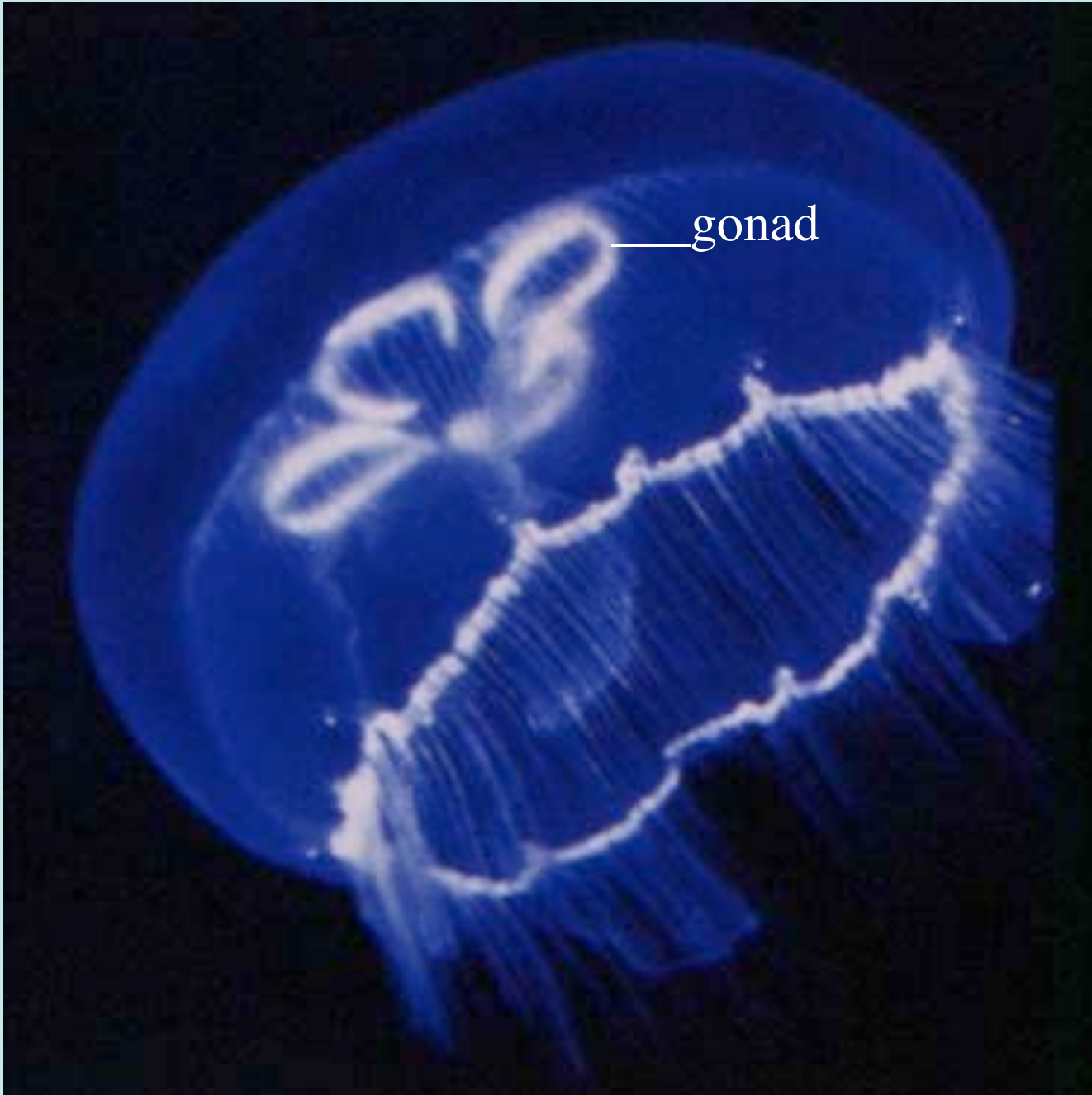
ovary

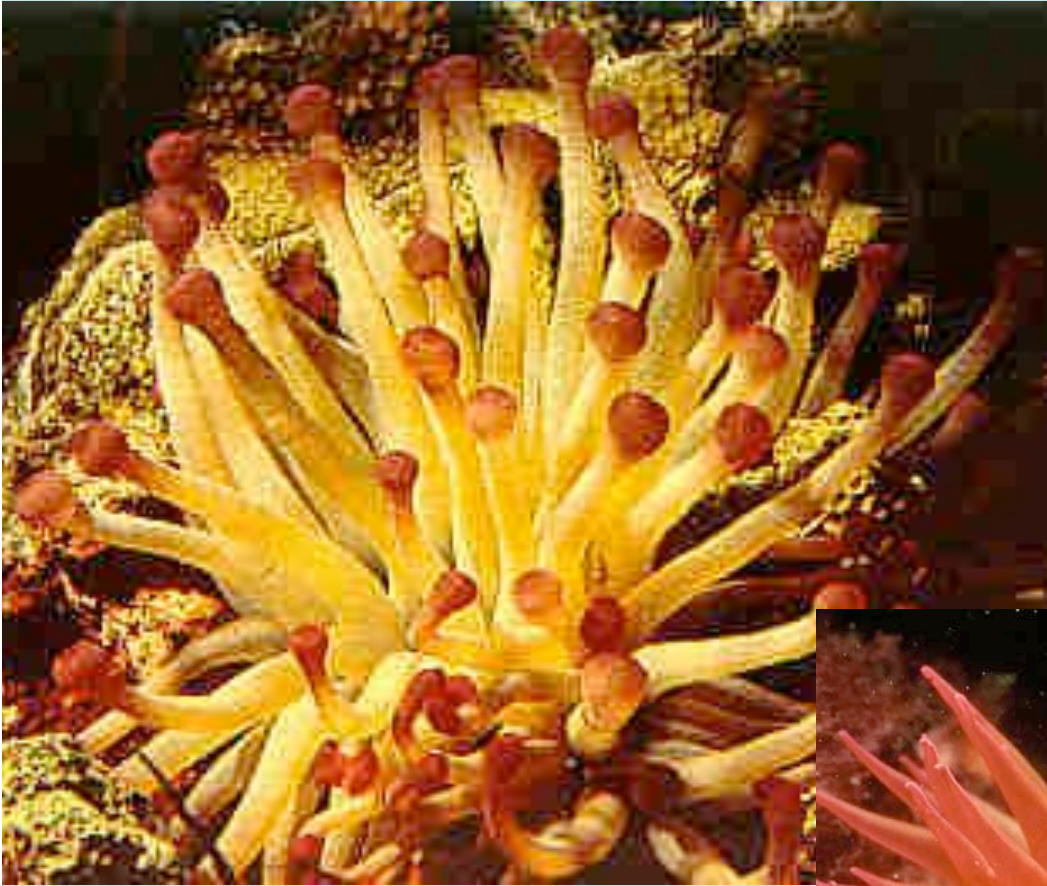
21





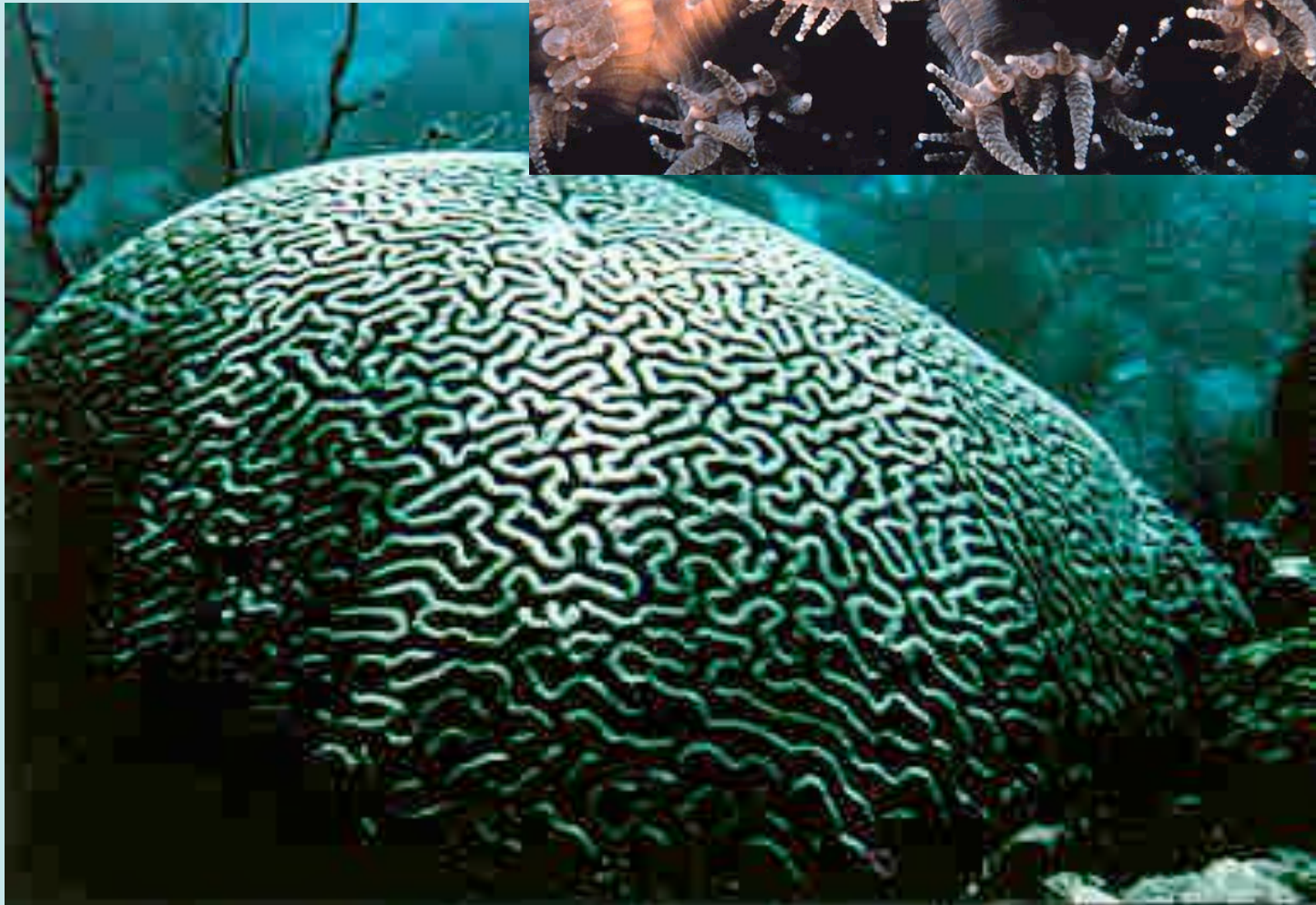






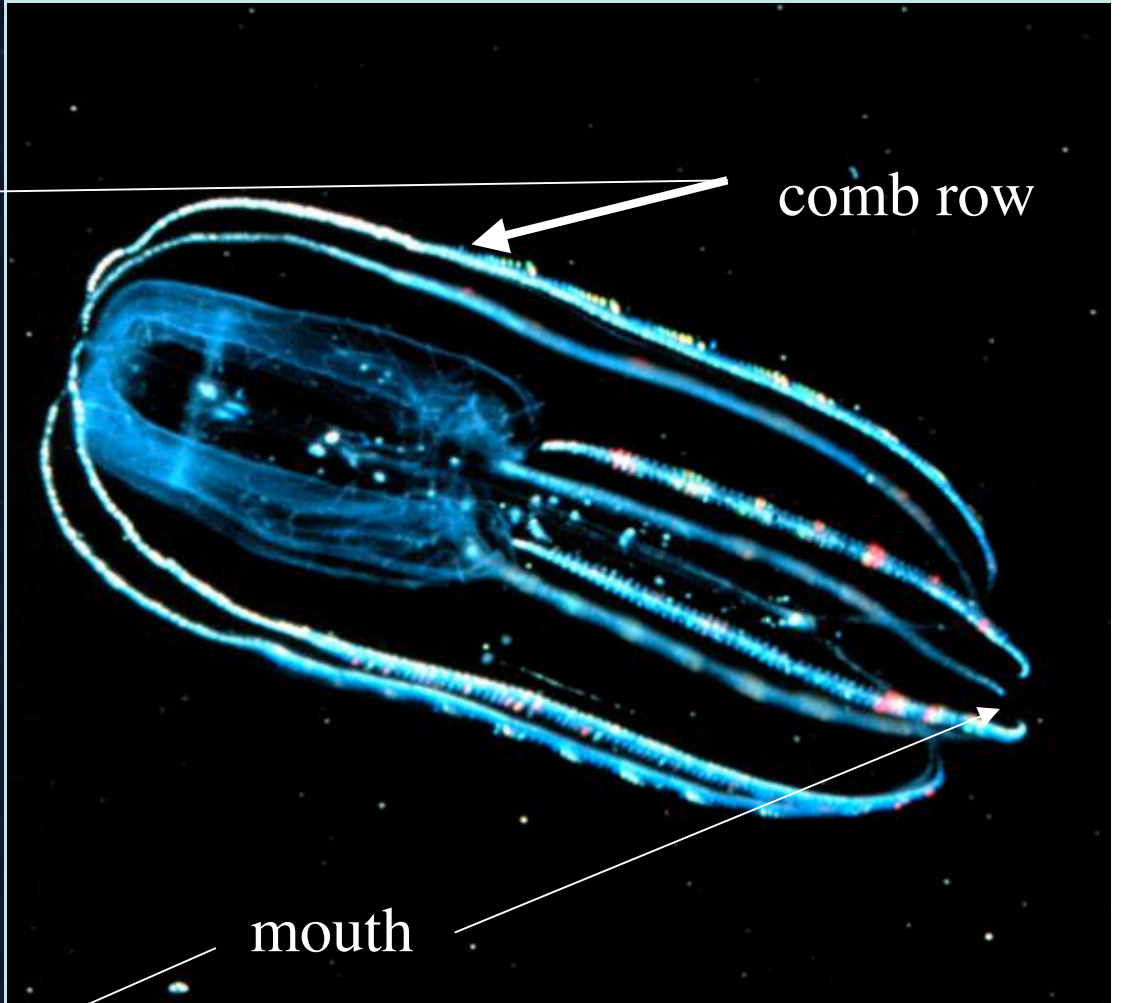
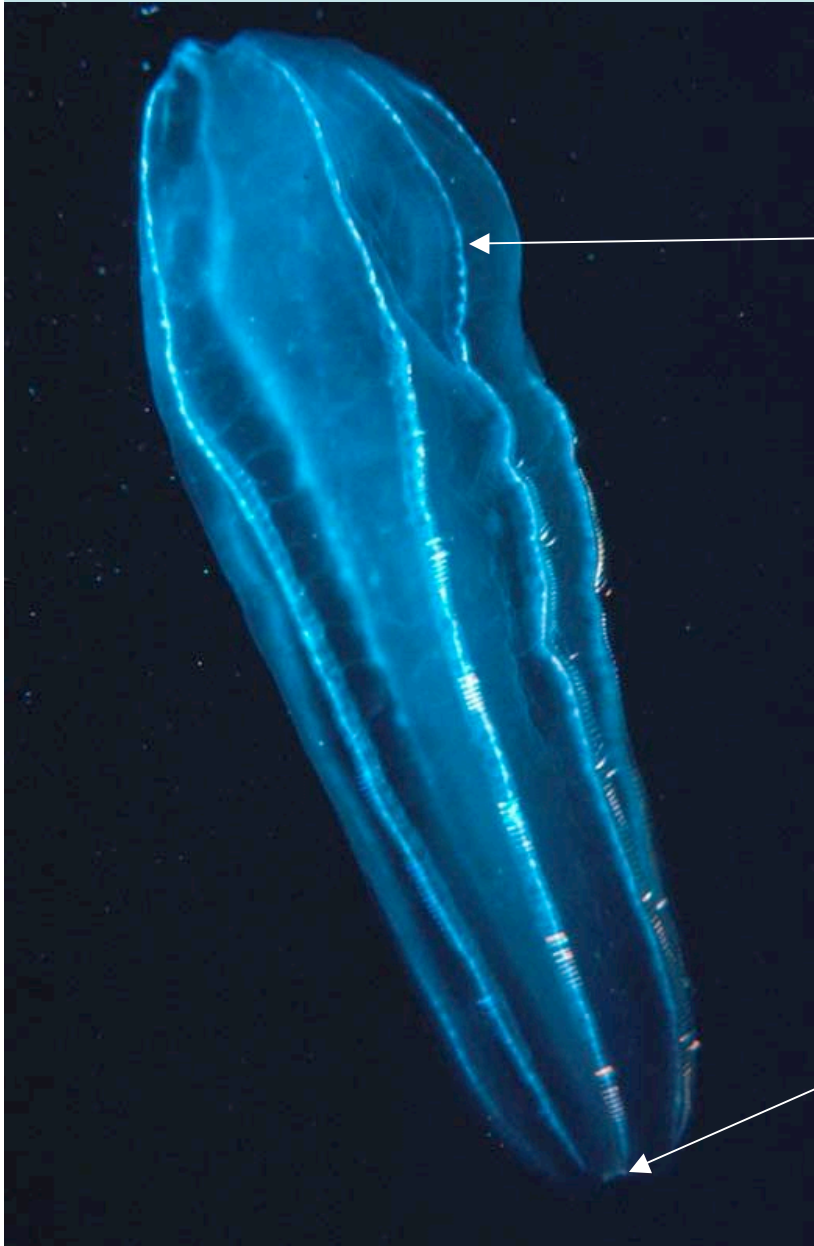


27





29



comb row

mouth